

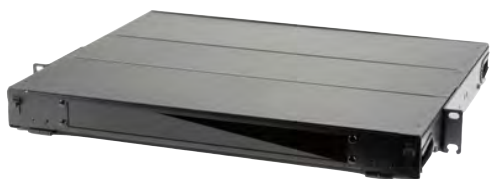


LGX Fiber Boxes and Adapter Plates

Shaxon's **Rack and Wall Mount Fiber Optic LGX compatible products** provide a simple and cost effective patching and splicing point for various fiber optic connectivity applications.

Features and Benefits:

- 16 gauge powder coated steel
- Easy access front and back, easy to disassemble for full access
- Lexan front access door
- Steel rear access door
- Multiple stops for securing the sliding tray in various positions
- Compatible with most LGX foot print products



Up to 72 LC connections, 36 SC connections or 36 ST connections per box

Part Number	Description
FPET1UBKL	Fiber Panel, 1U 3 LGX Ports with Sliding Tray. 19"W x 14"D x 1.75"H

Accessories include:

- 4 sets of cage nut mounting hardware
- Laser warning label
- 4 hook and loop cable ties
- 10 6" white zip ties
- 1 location label



FPET-SPL1WT
24 Fiber Stackable Splice
Holder for all FPET series boxes



Up to 144 LC connections, 72 SC connections or 72 ST connections per box

Part Number	Description
FPET2UBKL	Fiber Panel, 2U 6 LGX Ports with Sliding Tray 19"W x 14"D x 3.50"H

Accessories include:

- 4 sets of cage nut mounting hardware
- Laser warning label
- 4 hook and loop cable ties
- 10 6" white zip ties
- 1 location label



Up to 288 LC connections, 144 SC connections or 144 ST connections per box

Part Number	Description
FPET4UBKL	Fiber Panel, 4U 12 LGX Ports with Sliding Tray 19"W x 14"D x 7.00"H

Accessories include:

- 4 sets of cage nut mounting hardware
- Laser warning label
- 4 hook and loop cable ties
- 10 6" white zip ties
- 1 location label



Up to 24 LC connections, 12 SC connections or 12 ST Connections per box

Part Number	Description
FWMM55BK	Compact Indoor Wall Mount Enclosure, 1 LGX Port Capacity, 1 Splice Holder. 6.3"H x 5.5"W x 1.15"D

Features and Benefits:

- 16 Gauge Powder Coated Steel
- Small footprint for multiple installation environments
- Compatible with most LGX foot print products
- Includes splice holder
- Includes:
 - 1 unloaded lgx strip
 - 1 location label
 - 1 laser warning label
 - 1 adhesive backed 12 core splice holder
 - 12 splice sleeves with steel strength member
 - 2 6" white zip ties
 - 2 wood screws/expanders
 - 4 wire mgmt clips



Shaxon Industries, Inc.

337 W Freedom Ave, Orange, CA 92865

T. 800-345-8295

F. 800-345-5106

www.shaxon.com





LGX Fiber Boxes and Adapter Plates

(continued)



(FP-LCDTE-12-LG pictured)



12 Total LC Fiber Connections per LGX (6 x LC Duplex)

Part Number	Description
FP-LCDTE-12-LG	LGX Fiber Adapter Panel with 6 LC Duplex Adapters, OM4/OM3 Aqua
FP-LCDGN-12-LG	LGX Fiber Adapter Panel with 6 LC Duplex Adapters, OS2 APC Green
FP-LCDBG-12-LG	LGX Fiber Adapter Panel with 6 LC Duplex Adapters, OM1 Beige
FP-LCDBU-12-LG	LGX Fiber Adapter Panel with 6 LC Duplex Adapters, OS2 UPC Blue



(FP-LCDTE-16-LG pictured)



16 Total LC Fiber Connections per LGX (8 x LC Duplex)

Part Number	Description
FP-LCDTE-16-LG	LGX Fiber Adapter Panel with 8 LC Duplex Adapters, OM4/OM3 Aqua
FP-LCDGN-16-LG	LGX Fiber Adapter Panel with 8 LC Duplex Adapters, OS2 APC Green
FP-LCDBG-16-LG	LGX Fiber Adapter Panel with 8 LC Duplex Adapters, OM1 Beige
FP-LCDBU-16-LG	LGX Fiber Adapter Panel with 8 LC Duplex Adapters, OS2 UPC Blue



(FP-LCQTE-12-LG pictured)

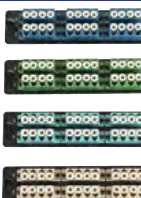


12 Total LC Fiber Connections per LGX (3 x LC Quad)

Part Number	Description
FP-LCQTE-12-LG	LGX Fiber Adapter Panel with 3 LC Quad Adapters, OM4/OM3 Aqua
FP-LCQGN-12-LG	LGX Fiber Adapter Panel with 3 LC Quad Adapters, OS2 APC Green
FP-LCQBG-12-LG	LGX Fiber Adapter Panel with 3 LC Quad Adapters, OM1 Beige
FP-LCQBU-12-LG	LGX Fiber Adapter Panel with 3 LC Quad Adapters/Ports, OS2 UPC Blue



(FP-LCQTE-24-LG pictured)



24 Total LC Fiber Connections per LGX (6 x LC Quad)

Part Number	Description
FP-LCQTE-24-LG	LGX Fiber Adapter Panel with 6 LC Quad Adapters, OM4/OM3 aqua
FP-LCQGN-24-LG	LGX Fiber Adapter Panel with 6 LC Quad Adapters, OS2 APC Green
FP-LCQBG-24-LG	LGX Fiber Adapter Panel with 6 LC Quad Adapters, OM1 Beige
FP-LCQBU-24-LG	LGX Fiber Adapter Panel with 6 LC Quad Adapters, OS2 UPC Blue



(FP-SCDTE-12-LG pictured)



12 Total SC Fiber Connections per LGX (6 x SC Duplex)

Part Number	Description
FP-SCDTE-12-LG	LGX Fiber Adapter Panel with 6 SC Duplex Adapters, OM4/OM3 Aqua
FP-SCDBG-12-LG	LGX Fiber Adapter Panel with 6 SC Duplex Adapters, OM1 Beige
FP-SCDBU-12-LG	LGX Fiber Adapter Panel with 6 SC Duplex Adapters, OS2 UPC Blue
FP-SCDGN-12-LG	LGX Fiber Adapter Panel with 6 SC Duplex Adapters, OS2 APC Green



(FP-SCTE-6-LG pictured)



6 Total SC Fiber Connections per LGX (6 x SC Simplex)

Part Number	Description
FP-SCTE-6-LG	LGX Fiber Adapter Panel with 6 SC Simplex Adapters, OM4/OM3 Aqua
FP-SCGN-6-LG	LGX Fiber Adapter Panel with 6 SC Simplex Adapters, OS2 APC Green
FP-SCBG-6-LG	LGX Fiber Adapter Panel with 6 SC Simplex Adapters, OM1 Beige
FP-SCBU-6-LG	LGX Fiber Adapter Panel with 6 SC Simplex Adapters, OS2 UPC Blue

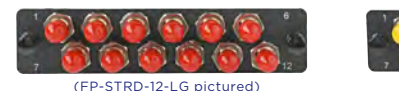


(FP-SCTE-8-LG pictured)



8 Total SC Fiber Connections per LGX (8 x SC Simplex)

Part Number	Description
FP-SCTE-8-LG	LGX Fiber Adapter Panel with 8 SC Simplex Adapters, OM4/OM3 aqua
FP-SCGN-8-LG	LGX Fiber Adapter Panel with 8 SC Simplex Adapters, OS2 APC Green
FP-SCBG-8-LG	LGX Fiber Adapter Panel with 8 SC Simplex Adapters, OM1 Beige
FP-SCBU-8-LG	LGX Fiber Adapter Panel with 8 SC Simplex Adapters, OS2 UPC Blue



(FP-STRD-12-LG pictured)



(FP-STYL-12-LG pictured)

12 Total ST Fiber Connections per LGX (12 x ST Simplex)

Part Number	Description
FP-STRD-12-LG	LGX Fiber Adapter Panel with 12 ST adapters, OM1 Red Cover
FP-STYL-12-LG	LGX Fiber Adapter Panel with 12 ST adapters, OS1 UPC Yellow Cover



(FP-BNK-BK-LG pictured)



(FP-KY-6-BK-LG pictured)

Additional Accessory Panels

Part Number	Description
FP-BNK-BK-LG	LGX Fiber Adapter Panel Blank
FP-KY-6-BK-LG	LGX Fiber Adapter Panel 6 Keystone Ports

