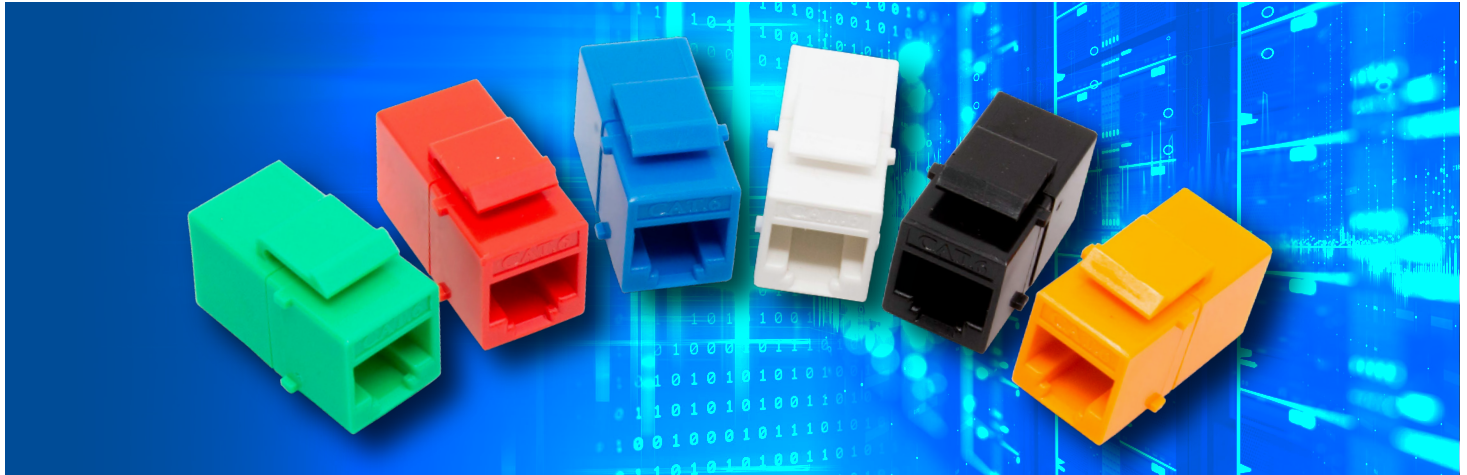




# CAT6 KEYSTONE COUPLERS

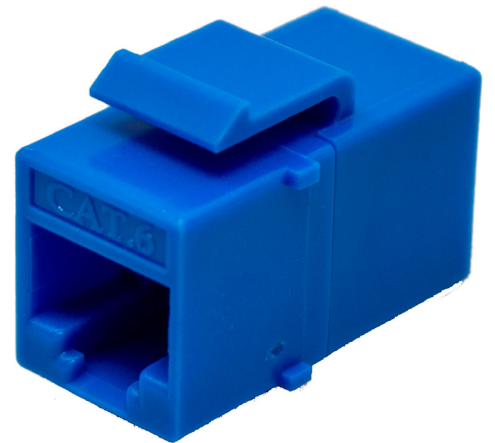
FLYER-BM703X-IC8

Shaxon **CAT6 KEYSTONE COUPLERS** are designed to connect two Category 6 Patch Cables. They work as a stand-alone solution where a coupler is needed or can be snapped into keystone panels or plates. A shoulder-less design allows them to fit side by side even in high density keystone patching fields.



### Features include:

- Multiple colors for various port designation requirements
- Compatible with any industry standard keystone port
- Backwards compatible with Cat5e systems
- Designed to snap into Keystone Panels or Keystone plates
- Meet or exceed CAT 6 specifications



Use Keystone Couplers with any compatible Shaxon panel including:

- PFKVF24-175WM** 24-Port 1U Unloaded Patch Panel, Flush Mount with Wire Mgmt
- PFKVF48-350WM** 48-Port 2U Unloaded Patch Panel, Flush Mount with Wire Mgmt

### Ordering Information:

Shaxon P/N	Color
BM703B-IC8	Black
BM703U-IC8	Blue
BM703R-IC8	Red
BM703O-IC8	Orange
BM703G-IC8	Green
BM703W-IC8	White



**Shaxon Industries, Inc.**  
 337 W Freedom Ave, Orange, CA 92865  
 T. 800-345-8295 F. 800-345-5106 [www.shaxon.com](http://www.shaxon.com)

