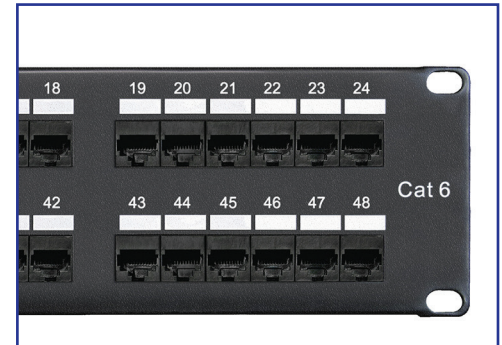




Cat 6 Patch Panel

Category 6/Class E punchdown patch panels terminate unshielded twisted 4-pair, 22-26 AWG, 100ohm cable and mount to standard TIA/EIA 19 inch racks. Punchdown tool properly terminates each conductor for optimum performance. Universal T568A and T568B color-coded wiring schemes included. Retention caps provided for additional strain relief.



TECHNICAL INFORMATION

- Channel performance:** Meets all TIA/EIA-568-C.2 Category 6 and ISO 11801 2nd Edition Class e channel standard requirements at swept frequencies up to 250 MHz
- FCC compliance:** Meets ANSI/TIA-968-A requirements; contacts plated with 50 microinches of gold for superior performance and durability
- IEC compliance:** Meets IEC 60603-7
- PoE compliance:** Meets requirements of IEEE 802.af and IEEE 802.3at for PoE Plus applications
- UL rated:** UL 1863 approved
- RoHS compliance:** Compliant

FEATURES AND BENEFITS

- **Available with 25 Year Installation Warranty**
Confidence that each patch panel delivers specified performance
- **Standard 110 style punchdown termination**
Utilizes industry standard termination style and includes a wire retention cap
- **High Density Patch Panel available**
Panels are available in a 24 port half rack unit version and a 48 port single rack unit design
- **Identification**
Write-on areas allow for port and panel identification
- **Backwards compatible**
Can be utilized for voice applications with Category 6 cable for easy migration to VoIP

PART NUMBER

- MP117MA128**
12 port, mini wall mount, 3.37in x 10in x 1.88in
- MP117HA128**
12 port, rack mount, 1.75in x 19in x 2in, 1U
- MP117HA248**
24 port, rack mount, 1.75in x 19in x 2in, 1U
- MP117HA488**
48 port, rack mount, 3.5in x 19in x 2in, 2U

APPLICATIONS

- Ethernet 10BASE-T, 100BASE-T (Fast Ethernet), and 1000BASE-T (Gigabit Ethernet)
- 10GBASE-T (10 Gigabit Ethernet) for limited distances
- 155 Mb/s ATM, 622 Mb/s ATM, 1.2 Gb/s ATM
- Token Ring 4/16
- Voice over internet protocol (VoIP)

DATA-PATCHPANEL