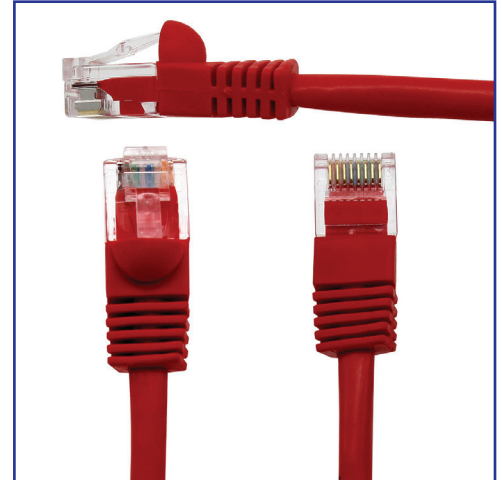




# Cat 6 Patch Cable

Category 6/Class E patch cables are constructed of UTP 24 AWG stranded copper cable and a modular plug at each end. Patch cables are used in all work area outlets and patch panels. Patch cables are wired to be compatible with both T568A and T568B wiring schemes.



TECHNICAL INFORMATION

- Channel performance:** Meets all TIA/EIA-568-C.2 Category 6 and ISO 11801 2nd Edition Class E channel requirements at frequencies up to 250 MHz
- FCC compliance:** Meets ANSI/TIA-968-A requirements; contacts plated with 50 microinches of gold for superior performance and durability
- IEC compliance:** Meets IEC 60603-7
- PoE compliance:** Meets requirements of IEEE 802.af and IEEE 802.3at for PoE Plus applications
- UL rated:** UL 1863 approved
- RoHS compliance:** Compliant

FEATURES AND BENEFITS

- **Available with 25 Year Installation Warranty**  
Confidence that each patch cable delivers specified performance long term
- **Tangle free boot**  
Provides easy release and prevents snags which can damage plugs
- **Overmolded boot**  
Provides strain relief and bend radius control to improve durability
- **Variety of colors and lengths stocked**  
Patch cables are stocked in all colors in standard lengths but custom lengths are available
- **Custom Options**  
Solid conductor cable, plenum, customer specified cable and plugs available

PART NUMBER

### UL724M8xxYY-YF

Replace xx with length (in feet): 01, 02, 03, 04, 05, 06, 07, 10, 14, 15, 20, 25, 50, 75, 100  
Replace YY-Y with color code below:

Black	Gray	Green	Red	White
BK-1	GY-3	GN-4	RD-5	WT-6
Yellow	Blue	Orange	Purple	Pink
YL-7	BU-8	OR-9	PR-A	PK-B

APPLICATIONS

- Ethernet 10BASE-T, 100BASE-T (Fast Ethernet), and 1000BASE-T (Gigabit Ethernet)
- 10GBASE-T (10 Gigabit Ethernet) for limited distances
- 155 Mb/s ATM, 622 Mb/s ATM, 1.2 Gb/s ATM
- Token Ring 4/16
- Voice over internet protocol (VoIP)

DATA-PATCHCABLE