

PREMISE WIRING PRODUCTS
FIBER OPTIC CONNECTIVITY
PERIPHERAL CABLES
O.E.M. /CUSTOM CABLES
AUDIO /VIDEO CABLES
BULK CABLE & CONNECTORS

GLOBAL SOURCING CALIFORNIA MANUFACTURING



Shaxon Industries, Inc.

Customer Service, Quality Products & Custom Manufacturing Since 1978

4852 E. La Palma Ave. Anaheim CA 92807 • Phone: (800) 345-8295 • Fax: (800) 345-5106 • www.shaxon.com

110IDC SERIES	23	C610 SERIES	14	CAB-HD8 SERIES	73
110PCC SERIES	22	C611 SERIES	14	CAB-NP232 SERIES	72
1110P	23	C612M8 SERIES	15	CAB-NP449 SERIES	72
625MB SERIES	40	C612SM8 SERIES	15	CAB-OCT SERIES	73
635MB SERIES	40	C613M8 SERIES	15	CAB-OCTAL SERIES	73
645MB SERIES	40	C613SM8 SERIES	15	CABOCTMODEM SERIES	73
647B SERIES	66	C614M8 SERIES	15	CAB-SS SERIES	74
AA02MCAA SERIES	49	C615M8 SERIES	15	CAB-V35 SERIES	73
AA02Z0AG SERIES	57	C616M8 SERIES	15	CAB-X21 SERIES	72
AA02Z5AA SERIES	54	C617M8 SERIES	15	CC01S7AQ SERIES	48
AA02Z6AA SERIES	51	C624-8 SERIES	12-13	CC02MCAA SERIES	49
AC01S7AQ SERIES	48	C624M8 SERIES	12-13	CC02Z0AG SERIES	57
AC02MCAA SERIES	50	C625-8 SERIES	13	CC02Z5AA SERIES	55
AC02Z0AG SERIES	57	C625I-8 SERIES	24	CC02Z6AA SERIES	52
AC02Z5AA SERIES	54	C625IC-8 SERIES	24	CH SERIES	44
AC02Z6AA SERIES	51	C625IS-8 SERIES	24	CL210 SERIES	30
AD332MBK	44	C625ISC-8 SERIES	24	CM02MCAA SERIES	50
AM02MCAA SERIES	50	C625M8 SERIES	13	CM02Z0AG SERIES	58
AM02Z0AG SERIES	57	C625P-8 SERIES	13	CM02Z5AA SERIES	55
AM02Z5AA SERIES	54	C625S-8 SERIES	16	CM02Z6AA SERIES	52
AM02Z6AA SERIES	51	C625SM8 SERIES	16	CM75M4 SERIES	100
AS02M0AG SERIES	58	C625SMP8 SERIES	16	CMG SERIES	44
AS02MCAA SERIES	49	C625SP-8 SERIES	16	CN3636MM36 SERIES	91
AS02Z5AA SERIES	55	C626SM8 SERIES	16	CRCA SERIES	96-97
AS02Z6AA SERIES	52	C632M8 SERIES	14	CS02MCAA SERIES	49
B-101 SERIES	118	C633M8 SERIES	14	CS02Z0AG SERIES	58
B-102 SERIES	118	C634M8 SERIES	14	CS02Z5AA SERIES	55
B-27 SERIES	118	C703-8 SERIES	6	CS02Z6AA SERIES	52
B-561	118	C710-8 SERIES	6	CV SERIES	45
B-564	118	C711-8 SERIES	6	CVRCA SERIES	98
B-7925	118	C712M8 SERIES	6	DB13W3 SERIES	129
BM303 SERIES	32-33	C712SM8 SERIES	6	DB15 SERIES	84, 128, 130
BM303-P SERIES	34	C713M8 SERIES	6	DB25 SERIES	128, 130
BM303WP SERIES	34	C713SM8 SERIES	6	DB26 SERIES	128
BM303x610 SERIES	32	C714M8 SERIES	6	DB37 SERIES	128, 131
BM52 SERIES	40	C715M8 SERIES	6	DB44 SERIES	128
BM552 SERIES	33	C716M8 SERIES	6	DB50 SERIES	131
BM603B-IC8	17, 33	C717M8 SERIES	6	DB62 SERIES	128
BM603SH810	17, 32	C724-8 SERIES	4-5	DB78 SERIES	129
BM603S-IC8	17, 33	C724M8 SERIES	4-5	DB9 SERIES	128, 130
BM603x810 SERIES	17, 32	C724S-8 SERIES	5	DBF SERIES	131
BM6IA SERIES	24	C725-8 SERIES	5	DBM SERIES	131
BM703B-IC8	10, 33	C725M8 SERIES	5	DC2536 SERIES	91
BM703SH810	10, 32	C725P-8 SERIES	5	DHC3P4 SERIES	85
BM703S-IC8	10, 33	C725S-8 SERIES	5	DIN SERIES	129
BM703x810 SERIES	10, 32	C725SP-8 SERIES	5	DV35D SERIES	75
BM803SH810	10, 32	C726S-8 SERIES	5	DVIA SERIES	95
BM803x810 SERIES	10, 32	C726SM8 SERIES	4	DVIDL SERIES	95
BMJCA	24	C728-8 SERIES	3	ER328 SERIES	126
BNCMS SERIES	118	C824M8 SERIES	2	ET2 SERIES	66
BP-101 SERIES	118	CA02MCAA SERIES	50	F-101 SERIES	115
C210 SERIES	30	CAB-232 SERIES	72	FA6QFMM SERIES	104
C4 SERIES	83	CAB-449 SERIES	72	FATA SERIES	86
C5 SERIES	83-85	CAB-530 SERIES	72	FBA SERIES	43
C603-8 SERIES	15	CAB-60MTC SERIES	72	FBL SERIES	60

PART NUMBER INDEX

FC SERIES	48-60	MP651HT SERIES	20	PLBANMS SERIES	116
FC01 SERIES	121	MP651T SERIES	20	PM14 SERIES	110
FC02 SERIES	121	MPCX SERIES	39	PM214MMM SERIES	110
FCMF SERIES	59	MPDB SERIES	38	PM2R622QS1000	123
FMA SERIES	61	MPFF SERIES	39	PM35 SERIES	110
FSA SERIES	61	MPFV SERIES	37	PM75M4 SERIES	100
GC09 SERIES	77	MPFVF SERIES	36	PM-A SERIES	122
GC25 SERIES	77	MPFVH SERIES	9, 19	PMBNC SERIES	106
GCH15 SERIES	77	MPH17HA SERIES	8	PMC SERIES	125
GCMD6 SERIES	90	MPH55HA SERIES	18	PMD4 SERIES	101
GCN SERIES	77, 82	MPHDB SERIES	38	PMD5MM SERIES	112
GCUSB SERIES	71	MPLFH SERIES	38	PMDAVRCA SERIES	99
GCV35 SERIES	77	MPOCT SERIES	73	PMDRCA SERIES	99
H5 SERIES	83-85	MPV35 SERIES	39	PMEHNBGUL	125
HDDB SERIES	131	MRR SERIES	42	PMF SERIES	104
HDM4BMM SERIES	94	MS02M0AG SERIES	58	PMFWBG	125
HDMDVI SERIES	94	MS02M5AA SERIES	56	PMQRCAMM-06	99
HF SERIES	21	MS02MCAA SERIES	49	PMR618GC5E1000	123
HM SERIES	21, 29	MS02Z6AA SERIES	53	PMR622QS1000	123
HT-315DR	22	MV35 SERIES	75	PMRCA SERIES	99, 106
IDC CONNECTOR SERIES	129	NM09 SERIES	76	PMSP SERIES	122
JC-RJ45	66	NM25 SERIES	76-77	PM-SVHS-BK	123
LL01S7AQ SERIES	48	P14 SERIES	115	PMUSB SERIES	125
MA02MCAA SERIES	50	P1P SERIES	124	PM-V SERIES	123
MA80 SERIES	64	P2P2524 SERIES	120	PMVRCA SERIES	99
MA85 SERIES	64	P35 SERIES	117	POTL SERIES	107
MC02MCAA SERIES	50	P3P SERIES	124-125	POUL SERIES	88
MC5A3 SERIES	29	PA14 SERIES	111	POW SERIES	87
MC5L6 SERIES	21	PA235M35SFM SERIES	111	POWER SERIES	87
MD SERIES	129	PA3524 SERIES	111	PPS SERIES	112
MD09 SERIES	76	PA75FMM SERIES	104	PRCA SERIES	96-97, 100, 106, 115
MD25 SERIES	76	PA75M4 SERIES	100	PRTIP SERIES	116
MD6 SERIES	90	PAF SERIES	104	PTL SERIES	107
MD84 SERIES	91	PAND5MM SERIES	112	PTPS SERIES	116
MD88 SERIES	45	PAR SERIES	123	PVRCA SERIES	98
MD899MM SERIES	90	PAYC SERIES	108-109	PXLR SERIES	114-115
MDIN9 SERIES	90	PBANMS SERIES	116	PYF SERIES	89
MDPHDM SERIES	94	PBANS SERIES	113	RC-C SERIES	124
MH75 SERIES	28	PBFSC SERIES	122	RWK SERIES	46
MHC3P4 SERIES	85	PBJBH-B-G	116	S89 SERIES	23
MM02MCAA SERIES	49	PBNC SERIES	106	SATA SERIES	86
MM02Z0AG SERIES	58	PBSC SERIES	122	SC1B SERIES	112
MM02Z5AA SERIES	56	PBUFSC SERIES	122	SC2 SERIES	81
MM02Z6AA SERIES	53	PC-RJ45	66	SC2BAN216MM SERIES	112
MP110 SERIES	23, 28	PDBANM-B-G-RB	116	SC3 SERIES	79-80
MP110-WM	22	PEUL SERIES	88	SC5 SERIES	78
MP117HA SERIES	7	PEX-23 SERIES	43	SCCN50 SERIES	82
MP117MA128	10	PF00 SERIES	42	SCD25CN50 SERIES	82
MP118HA SERIES	7	PFCX SERIES	39	SCD50 SERIES	82
MP118SHA SERIES	7	PFDB SERIES	38	SCHPCN50SC5 SERIES	78
MP155HA SERIES	17	PFF SERIES	39	SCTIP216MM SERIES	112
MP155MA128	17	PFKV SERIES	37	SR SERIES	66
MP51 SERIES	26-27	PFKVF SERIES	35-36	SS02M6AA SERIES	53
MP651A SERIES	20	PFMS-B-G	115	SS02Z0AG SERIES	58
MP651HA SERIES	20	PHC3P4 SERIES	85		

SS02Z5AA SERIES56
 T2P2524 SERIES120
 U31A SERIES68-69
 UL120 SERIES66
 UL123 SERIES66
 UL124 SERIES66
 UL124-IAK24
 UL131 SERIES40
 UL13340
 UL148X40
 UL150 SERIES66
 UL151 SERIES40
 UL152 SERIES40
 UL153-340
 UL160 SERIES66
 UL162-866
 UL164 SERIES66
 UL170-866
 UL210 SERIES30
 UL211 SERIES34
 UL212 SERIES34
 UL300 SERIES126
 UL624-4GY120
 UL624-8 SERIES12, 120
 UL624M8 SERIES12
 UL624S-8 SERIES120
 UL625-8 SERIES120
 UL625I SERIES24, 120
 UL625P-8 SERIES120
 UL625S-8 SERIES120
 UL626S-8 SERIES120
 UL626SM8 SERIES16
 UL724-8 SERIES4, 120
 UL724M8 SERIES4
 UL725-8 SERIES120
 UL725P-8 SERIES120
 UL725S-8 SERIES120
 UL725SP-8 SERIES120
 UL726S-8 SERIES120
 UL726SM8 SERIES4
 UL728-8 SERIES3
 UL824-8 SERIES120
 UL824M8 SERIES2
 UL825-8 SERIES120
 UL825P-8 SERIES120
 UL825S-8 SERIES120
 UL825SP-8 SERIES120
 UL826S-8 SERIES120
 USB2AA SERIES70-71
 USB2AB SERIES70
 USB2AMB SERIES70
 USB2XBHD SERIES71, 94
 USB3 SERIES68
 USBAA2-XKIT71
 USBADB SERIES71

UV625-8 SERIES24, 120
 V35 SERIES75
 WDS22
 WM SERIES44
 WM110 SERIES22-23
 WM-6 SERIES22
 WM66 SERIES23
 WP98 SERIES34
 WP99 SERIES34
 Y-6MDMFF-0190
 ZIP-CLIP1060

CATEGORY INDEX

1/4in & 3.5mm Audio

3.5mm + SVGA cables	85
Cables	85, 110-111, 112, 114
Connectors	115, 117
Y adapters	108-109

110 Products

Blocks, plugs, trays, panels, brackets, wire distribution spool and impact tool	21-22
Keystone jacks	10, 17, 32
Patch cables	10, 14
Patch panels	7-8, 10, 17-18, 23, 28

25-Pair Trunk Cable

Bulk cable	120
Category 3	29
Category 5e	21

Adapters

F & BNC	118
D-subminiature, RJ12 & RJ45 modular	64-65
Fiber optic	61
Parallel	91
Power cord	88
PS/2	90
RCA	101, 106, 108-109, 115
SCSI	82
Serial	77
speakON™	112
S-Video	100-101
TOSLINK™	107
USB	68-69, 71
T adapters	40
Y adapters	108-109

Audio/Video

Banana plugs/cables	112, 116
Bantam cables	113
BNC	33, 39, 83-84, 101, 106, 118
Bulk cable	122-123
CATV	104, 115
Connectors & adapters	115-118
Custom coaxial	103
DVI	95
HDMI®	71, 94
Junction panels	39
Keystone couplers	33
Monitor cables	83-85
RCA	33, 96-99, 101, 106, 108-109, 110, 111, 115

Audio/Video continued

speakON™ & midi cables	112
S-Video	100-101
TOSLINK™	107
XLR	114, 115
Y adapters	108-109

Banana

Cables	112
Connectors	116

Bantam Cables

BNC

Cables	101, 106
Connectors	118
Junction panels	39
Keystone couplers	33
Monitor cables	83-84

Bulk Cable

25-Pair trunk	120
Audio/video	122-123
Category 5e	120, 123
Category 6, 6A	120
Communications	124
Fiber optic	121
Flat satin	126
Industrial/all weather	24, 120

Cable Ties

Cable Trays

Category 3 Products

110 patch panels	28
25-Pair trunk	29
Bulk cable	120
Flat Satin patch cables	30
Harmonicas	28
Hydra	29
Keystone couplers	33
Keystone jacks	33
Keystone panels	33
Telco patch panels	26-27

Category 5e Products

25-Pair trunk	21
Bulk cable	24, 120
Harmonicas	20
Hydra cables	21
Industrial/all weather	24
Keystone couplers	17, 33
Keystone jacks	17, 32
Patch cables	12-16
Patch panels	17-20

Category 6 & 6A Products

Bulk cable	120
Keystone couplers	10, 33
Keystone jacks	10, 32
Patch cables	2-6

Category 6 & 6A Products cont.

Patch panels	7-10
--------------	------

CATV

Cables	104
Connectors	115
Wall plates	34

Cisco™ Products

Cables & panels	72-73
Smart serial	74

Computer Peripheral

Adapters	68-69, 71, 77, 90
Cisco™	72-74
Gender changers	77
Keyboard & mouse cables	90
Monitor cables	83-85
Null modem	76
Parallel printer cables	91
Power cables	87-88
Power strips	89
SATA & IDE	86
SCSI	78-82
Serial	71, 74, 76, 77
USB	72-74, 94
V.35	39, 75, 77

Connectors

110 plugs	22
Audio/video	115-118
DIN & Mini DIN	129
D-subminiature	128-131
Fiber optic	60
IDC Ribbon	129
RJ11, 12 & 45	24, 66

Couplers

F coaxial	33
Banana	33
BNC	33
Category 3	33
Category 5e	17, 33
Category 6	10, 33
Fiber optic	33
HDMI®	33
Mini DIN	33
RCA	33
RJ11, 12 and 45	33, 40
USB	33

DIN

Cables & adapters	90
Connectors	129
Keystone couplers	33
Midi cables	112
S-Video	100-101

D-Subminiature

Adapters	77, 91
Cisco™	72-74

D-Subminiature continued

Connectors128-129
 Hoods & pins130-131
 Junction panels38-39
 Modular adapters64-65
 Monitor cables83-85
 Parallel printer91
 SCSI71-82
 Serial cables71, 74, 76, 77
 V.3539, 75, 77
 Wall plates34

DVI95

F-type Coaxial

Cables104
 Connector115
 Custom cable103
 Junction panels39
 Keystone couplers33
 Wall plates34

Fiber Optic

10 Gigabit48
 Adapters61
 Bulk cable121
 Connectors60
 Keystone couplers33
 Loopback modules60
 Mode conditioning49-50
 MTP multi-strand59
 Patch cables48, 51-58
 TOSLINK™107

FireWire

Bulk cable125

Flat Satin

Bulk cable126
 Hydra29
 Patch cables30
 Plugs66

Gender Changers

SCSI82
 Serial77

HDMI®

Cables94
 Keystone couplers33
 USB adapter cable71, 94

Hydra Cables

Category 3 & flat satin29
 Category 5e21

IDE Cables86

Industrial/All Weather

Bulk cable24, 120
 Patch cables, jacks &
 other products24

Junction

Panels38-39
 Wall plates34

Keyboard Cables

Bulk cable125
 Cables90

Keystone

Jacks10, 17, 32
 Couplers10, 17, 33
 Panels35-37
 Patch cables6, 15
 Surface mount boxes40
 Wall plates34

KVM

Bulk cable125

Midi Cables112

Mini DIN

Cables & adapters90
 Connectors129
 Keystone couplers33
 S-Video100-101

Modular

Adapters64-65
 Assemblies65
 Crimp tools66
 Harmonicas28
 Plugs66

Monitor Cables64, 65

Mouse

Bulk cable125
 Cables90

Null Modem76

Parallel Printer Cables91

Patch Cables

1106, 14
 60° Angled14
 Category 5e12-16
 Category 63-6
 Category 6A2
 Fiber optic48, 51-58
 Flat satin30
 Industrial/all weather24
 Keystone6, 15
 Slim Jacket3

Patch Panels

1107-8, 10, 17-18, 23, 28
 Category 326-28
 Category 5e17-20
 Category 6 & 6A7-10
 Cisco™73
 Feed-through9, 19
 Keystone35-37
 Mini wall mount30, 17
 Telco20, 26-27
 Ultra high-density
8-9, 18-19, 35
 V.3539, 75

Phone Cables

Audio
See 1/4in & 3.5mm Audio
 Flat satinSee Flat Satin

Power Cables87-88

Power Strips89

Raceway & Connectors46

Racks42

RCA

Adapters
101, 106, 108-109, 115
 Cables
96-99, 101, 106, 110, 111
 Connectors115
 Keystone couplers33

Relay Rack Shelves42

RG6, 59

Bulk cable123
 Cables106

Ribbon Cable124

RJ11,12 & 45

Keystone couplers33
 Keystone jacks32
 Modular adapters64-65
 Plugs66
 RJ45 Boots66
 Surface mount boxes &
 T adapters40
 Wall plates34

SCSI

Bulk cable124
 Cables78-82

SATA Cables86

Serial

Adapters77
 Cables76
 Cisco™ smart serial74
 USB adapter cable71

Speaker

Bulk cable122
 Cables112

speakON™112

Surface Mount Boxes40

SVGA

Bulk cable125
 Cables84-85

S-Video

Cables100-101

Telco

Harmonicas20, 28
 Hydra21, 29
 Patch panels20, 26-27

Tools22, 66

TOSLINK™

Cables & adapters107

CATEGORY INDEX

USB

Adapters	68-69, 71
Assemblies	71
Bulk cable	125
Cables	68, 70-71
HDMI® adapter cable	72
Keystone couplers	33

V.35

Adapters	77
Cables	75
Panels	39, 75

VGA See SVGA

Bulk cable	124, 125
Cables	83

Wall-Plates

Keystone, junction & blank	34
Loaded	34

Wire Management

110	22
Cable ties	45
Raceway & connectors	46
Racks & rack mount	
Wire managers	42, 44

Wall Mount Brackets43

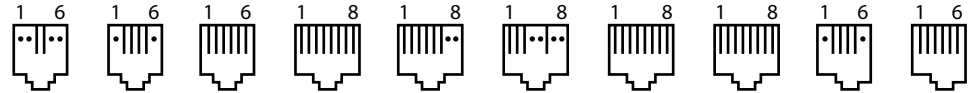
XLR

Cables	114
Connector	115

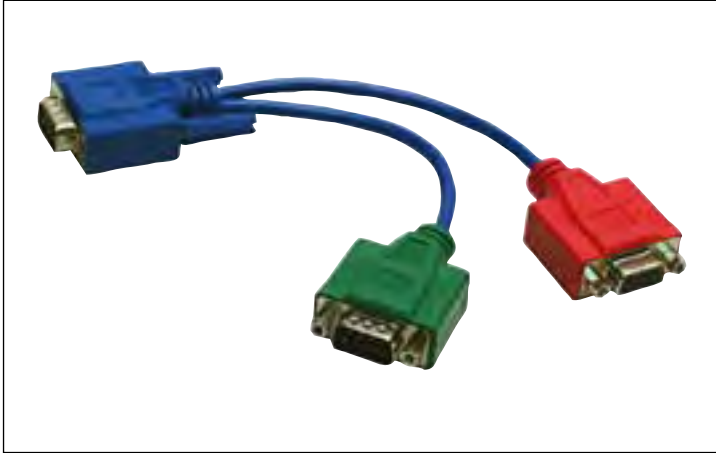
Y-Adapters108-109

Zip Ties45

WIRING SPECIFICATIONS



25 PAIR CABLE COLOR CODE	TELCO PIN #	110 PIN #	USOC WIRING RJ11 6P2P	USOC WIRING RJ11 6P4C	USOC WIRING RJ12 6P6C	USOC WIRING RJ45 8P8C	356A WIRING RJ45 8P6C	10 BASE-T WIRING RJ45 8P4C	AT&T EIA 568B RJ45 8P8C	EIA 568A RJ45 8P8C	DEC WIRING MMJ 6P4C	DEC WIRING MMJ 6P6C
WHITE/BLUE	26	1	4	4	4	5	5	1	5	5	2	2
BLUE/WHITE	1	2	3	3	3	4	4	2	4	4	3	3
WHITE/ORANGE	27	3	4	2	2	3	1	3	1	3	5	5
ORANGE/WHITE	2	4	3	5	5	6	2	6	2	6	4	4
WHITE/GREEN	28	5	4	4	1	2	3	1	3	1	2	1
GREEN/WHITE	3	6	3	3	6	7	6	2	6	2	3	6
WHITE/BROWN	29	7	4	2	4	8	5	3	7	7	5	2
BROWN/WHITE	4	8	3	5	3	1	4	6	8	8	4	3
WHITE/SLATE	30	9	4	4	2	5	1	1	5	5	2	5
SLATE/WHITE	5	10	3	3	5	4	2	2	4	4	3	4
RED/BLUE	31	11	4	2	1	3	3	3	1	3	5	1
BLUE/RED	6	12	3	5	6	6	6	6	2	6	4	6
RED/ORANGE	32	13	4	4	4	2	5	1	3	1	2	2
ORANGE/RED	7	14	3	3	3	7	4	2	6	2	3	3
RED/GREEN	33	15	4	2	2	8	1	3	7	7	5	5
GREEN/RED	8	16	3	5	5	1	2	6	8	8	4	4
RED/BROWN	34	17	4	4	1	5	3	1	5	5	2	1
BROWN/RED	9	18	3	3	6	4	6	2	4	4	3	6
RED/SLATE	35	19	4	2	4	3	5	3	1	3	5	2
SLATE/RED	10	20	3	5	3	6	4	6	2	6	4	3
BLACK/BLUE	36	21	4	4	2	2	1	1	3	1	2	5
BLUE/BLACK	11	22	3	3	5	7	2	2	6	2	3	4
BLACK/ORANGE	37	23	4	2	1	8	3	3	7	7	5	1
ORANGE/BLACK	12	24	3	5	6	1	6	6	8	8	4	6
BLACK/GREEN	38	25	4	4	4	5	5	1	5	5	2	2
GREEN/BLACK	13	26	3	3	3	4	4	2	4	4	3	3
BLACK/BROWN	39	27	4	2	2	3	1	3	1	3	5	5
BROWN/BLACK	14	28	3	5	5	6	2	6	2	6	4	4
BLACK/SLATE	40	29	4	4	1	2	3	1	3	1	2	1
SLATE/BLACK	15	30	3	3	6	7	6	2	6	2	3	6
YELLOW/BLUE	41	31	4	2	4	8	5	3	7	7	5	2
BLUE/YELLOW	16	32	3	5	3	1	4	6	8	8	4	3
YELLOW/ORANGE	42	33	4	4	2	5	1	1	5	5	2	5
ORANGE/YELLOW	17	34	3	3	5	4	2	2	4	4	3	4
YELLOW/GREEN	43	35	4	2	1	3	3	3	1	3	5	1
GREEN/YELLOW	18	36	3	5	6	6	6	6	2	6	4	6
YELLOW/BROWN	44	37	4	4	4	2	5	1	3	1	2	2
BROWN/YELLOW	19	38	3	3	3	7	4	2	6	2	3	3
YELLOW/SLATE	45	39	4	2	2	8	1	3	7	7	5	5
SLATE/YELLOW	20	40	3	5	5	1	2	6	8	8	4	4
VIOLET/BLUE	46	41	4	4	1	5	3	1	5	5	2	1
BLUE/VIOLET	21	42	3	3	6	4	6	2	4	4	3	6
VIOLET/ORANGE	47	43	4	2	4	3	5	3	1	3	5	2
ORANGE/VIOLET	22	44	3	5	3	6	4	6	2	6	4	3
VIOLET/GREEN	48	45	4	4	2	2	1	1	3	1	2	5
GREEN/VIOLET	23	46	3	3	5	7	2	2	6	2	3	4
VIOLET/BROWN	49	47	4	2	1	8	3	3	7	7	5	1
BROWN/VIOLET	24	48	3	5	6	1	6	6	8	8	4	6
VIOLET/SLATE	50	49	-	-	-	-	-	-	-	-	-	-
SLATE/VIOLET	25	50	-	-	-	-	-	-	-	-	-	-
# OF MODULAR JACKS PER TELCO CONNECTOR			24	12	8	6	8	12	6	6	12	8



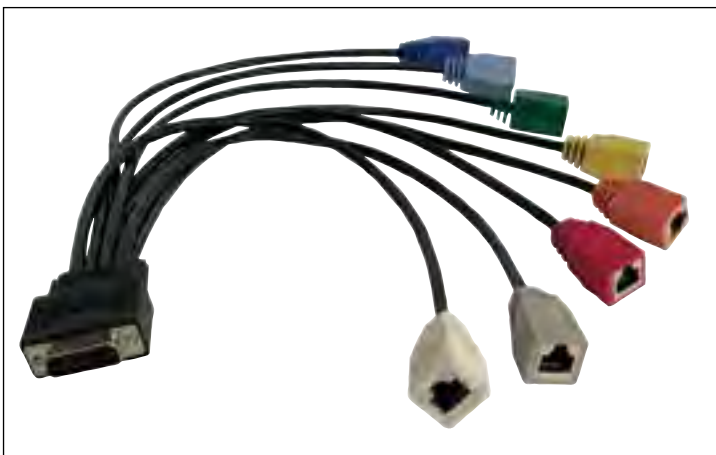
Options.
Capabilities.
Solutions.

When it comes to Custom Cable Assemblies and Wiring Products, consider Shaxon Industries your first choice for innovative product development. Our experienced team of engineers are ready to help you design, prototype and implement your specialty requirement.

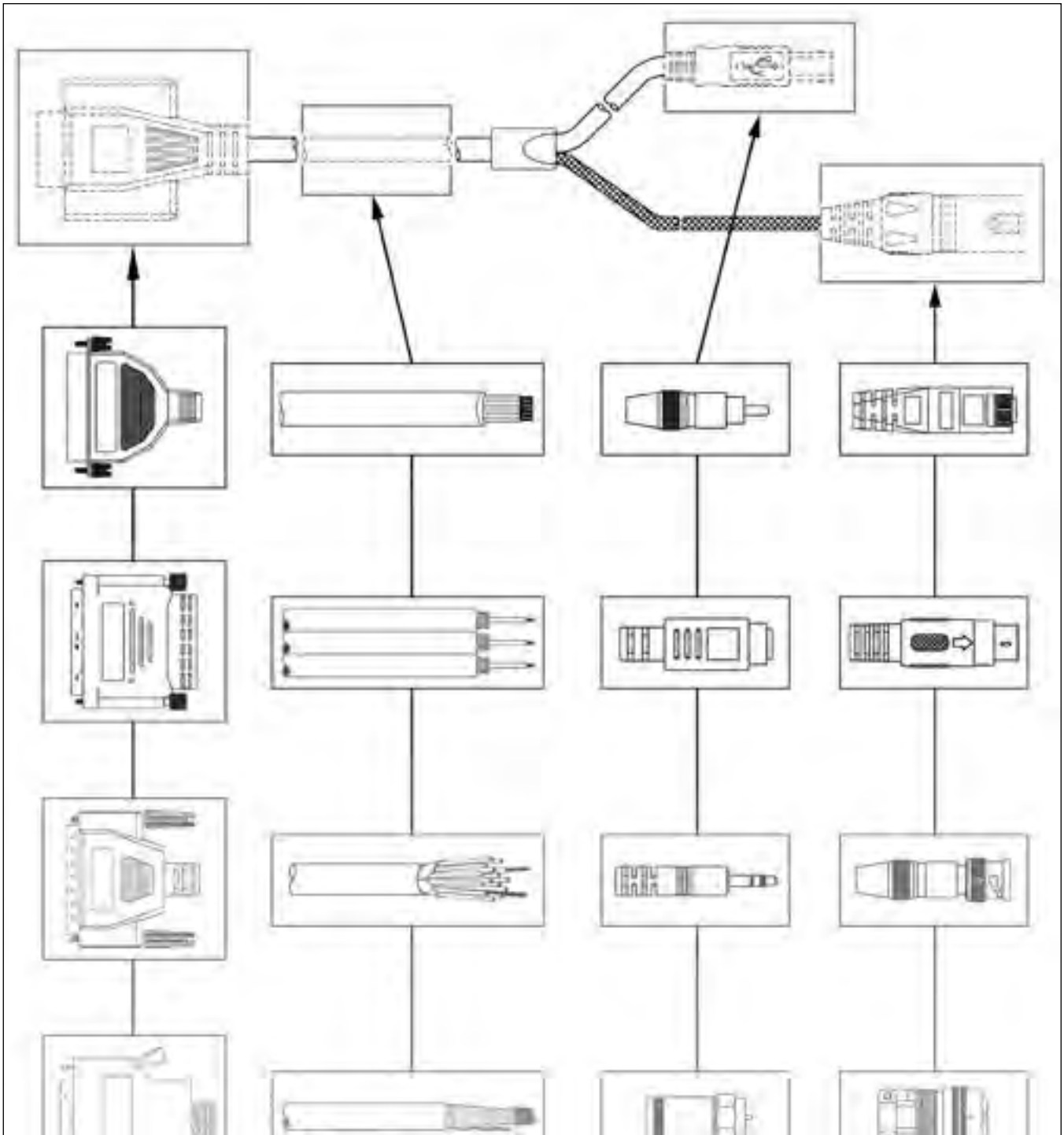


Molded Solutions.
Durable.
Economical.

At Shaxon Industries, our strength is the design and manufacture of standard and specialty molded cables. Molding provides a variety of benefits to any assembly including quality, durability and aesthetic appeal. Our team of experienced engineers and technicians bring years of design experience and expertise to your molded cable challenge and solution.



Send us your specific requirements and let our team do the rest.



Any Connector Any Cable Any Configuration

SALES/MARKETING SUPPORT PRODUCTS

RETAIL PACKAGING

Shaxon products are available in attractive retail packaging for counter top sales. Contact your sales representative for details.



PREMISE PRODUCT FLYER

Premise products from jacks to panels and patch cords are featured in Shaxon's flyer.

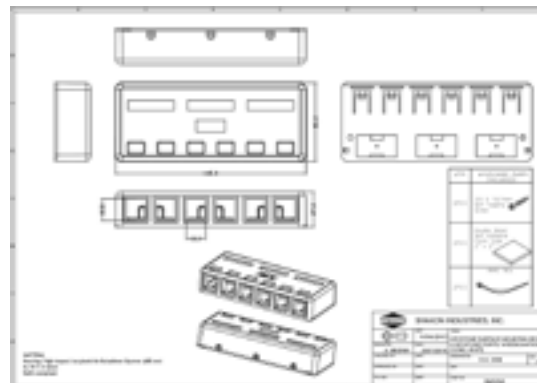
OEM/CUSTOM CABLE FLYERS

Shaxon spotlights on-shore injection molding and custom cable assemblies in the OEM/Custom cable flyer series.



CATEGORY 6 PREMISE DISPLAY

Shaxon's Premise Category 6 display incorporates a full selection of Shaxon's cable, wall outlet and panel product lines. Free standing or rack mountable.



ENGINEERING DRAWINGS

Engineering drawings are available for all Shaxon products.

SHIPPING POLICY:

FOB point: All orders are shipped FOB origin point unless pre-approved for FOB destination.

Shipping method: Unless specified at time of order, all shipments will be shipped pre-paid via the cheapest method or freight depending on the weight of the shipment.

Shipping Discrepancies: It is the buyer's responsibility to confirm the receipt of all items as indicated on the packing slip. Failure to report shipping discrepancies within ten (10) days of receipt will result in the order not being credited regardless of circumstances.

RMA POLICY:

All returns must have a Return Merchandise Authorization (RMA) number, must be in original condition and must be requested within thirty (30) days from the date of purchase. Any return for any reason other than defects or shipping discrepancies will be charged a fifteen percent (15%) restocking fee. Please note that CUSTOM CABLE ASSEMBLIES/CUSTOM PRODUCTS ARE NON-RETURNABLE AND NON-CANCELABLE.

INVOICE:

Invoice Receipt: In the event that the buyer does not receive any invoice by mail after ten (10) days upon receipt of shipment, the buyer shall request the invoice via registered mail, email or fax within fifteen (15) days of the billing date. Otherwise the invoice will be considered correct, full payment shall be fulfilled.

Terms Invoices: All N30 (Net 30) invoices are due thirty (30) days from shipping. All invoices become delinquent after (30) thirty days from date of shipping. As a condition of the sales agreement, a monthly finance charge of the lesser of one and a half percent (1.5%) per month or the maximum permitted by law will be added to all past due invoices until paid in full. All past due accounts over forty-five (45) days will be placed on hold until the balance is paid in full.

VENUE:

Shaxon Industries, Inc. sustains security interest on the merchandise stated above. Venue shall lie in Orange County, California, and the rights and obligations of the parties hereto shall be enforced in the state of California.

WARRANTY POLICY:

Warranty: Shaxon Industries, Inc. provides a lifetime (of the product) guarantee against defects and labor on all custom and off the shelf cables. Please note that CUSTOM CABLE ASSEMBLIES/CUSTOM PRODUCTS ARE NON-RETURNABLE AND NONCANCELABLE. Before using, buyer shall determine the suitability of the product for their intended use; buyer assumes all risks and liability in connection therewith. This warranty is not inclusive of labor for removal or reinstallation of products, and is void on any product reconfigured, installed improperly or installed in an improper environment, or misused as determined by engineering inspection of Shaxon Industries, Inc.

PAYMENT POLICY:

Shaxon Industries, Inc. accepts Visa, MasterCard, Discover, American Express, Checks and Money Orders. We do not add any credit card surcharges. Open account terms are available to qualifying resellers only - please contact your Account Manager at (800) 345-8295 for additional information.

LIMITATION OF LIABILITY:

IN NO EVENT SHALL SHAXON INDUSTRIES, INC., ITS SUBSIDIARIES OR AFFILIATES OR THEIR RESPECTIVE PARTNERS, OFFICERS, DIRECTORS, EMPLOYEES, SHAREHOLDERS, REPRESENTATIVES OR AGENTS (COLLECTIVELY, "SHAXON INDUSTRIES, INC.") BE LIABLE FOR DIRECT, SPECIAL, INCIDENTAL, CONSEQUENTIAL, PUNITIVE OR INDIRECT DAMAGES (INCLUDING BUT NOT LIMITED TO: LOSS OF DATA, USE OR PROFITS), HOWEVER CAUSED, WHETHER FOR BREACH OF CONTRACT, NEGLIGENCE, OR OTHERWISE, AND WHETHER OR NOT SHAXON INDUSTRIES, INC. HAS BEEN ADVISED OF THE POSSIBILITY OF ANY SUCH DAMAGES; YOU AGREE THAT SHAXON INDUSTRIES, INC., MAXIMUM LIABILITY FOR CERTAIN DAMAGES, SO THE ABOVE MAY NOT APPLY TO YOU TO THE EXTENT SUCH JURISDICTION'S LAW IS APPLICABLE TO THIS AGREEMENT.

Trademarks are the property of their respective owners.

©2017 Shaxon Industries, Inc. All rights reserved. The information in this document is subject to change without notice.

750



Shaxon Industries, Inc.

4852 E. La Palma Ave.
Anaheim CA 92807 USA
www.shaxon.com

Phone: (800) 345-8295
(714) 779-1140

Fax: (800) 345-5106
(714) 779-5091