

PREMISE WIRING PRODUCTS
FIBER OPTIC CONNECTIVITY
PERIPHERAL CABLES
O.E.M. /CUSTOM CABLES
AUDIO /VIDEO CABLES
BULK CABLE & CONNECTORS

GLOBAL SOURCING CALIFORNIA MANUFACTURING



Shaxon Industries, Inc.

Customer Service, Quality Products & Custom Manufacturing Since 1978

4852 E. La Palma Ave. Anaheim CA 92807 • Phone: (800) 345-8295 • Fax: (800) 345-5106 • www.shaxon.com

PERFORMANCE PLUS™ AUDIO/VIDEO PRODUCTS



- 94 HDMI®**
- 95 DVI Cables**
- 96 RCA Audio/Video Cables**
- 100 S-Video Cables & Adapters**
- 102 Custom Coaxial Cable Ordering Chart**
- 103 Custom Coaxial Cable**
- 104 F-type Cables**
- 105 Audio & Video Cable Guide**
- 106 BNC Cables**
- 107 TOSLINK™ Cables**
- 108 Y-adapters**
- 110 ¼in & 3.5mm Cables**
- 112 Speaker & Midi Cables**
- 113 Bantam Cables**
- 114 Pro XLR Cables**
- 115 Connectors & Adapters**

HIGH SPEED HDMI® CABLES

Shaxon's cables that incorporate HDMI® technology are designed to transmit digital audio/video signals from DVD players, set-top boxes and other audio/video sources to television sets, projectors and other video displays. HDMI® can transmit high quality multi-channel audio data as well as standard and high-definition consumer electronics video formats up to 4K and 3D.

Replace zz with custom length and replace X with F for feet or M for meters.



HIGH SPEED WITH ETHERNET HDMI® CABLES WITH GOLD CONNECTORS

HDM4BMM01M	1m
HDM4BMM02M	2m
HDM4BMM03M	3m
HDM4BMM05M	5m
HDM4BMM10M	10m
HDM4BMM15M	15m
HDM4BMM25M	25m
HDM4BMMzzX	Custom length

HDMI® MALE TO DVI SINGLE-LINK MALE, CABLES WITH GOLD CONNECTORS

HDMDVIMM01M	1m
HDMDVIMM02M	2m
HDMDVIMM03M	3m
HDMDVIMM05M	5m
HDMDVIMM10M	10m
HDMDVIMM15M	15m
HDMDVIMM25M	25m
HDMDVIMMzzX	Custom length



MINI DISPLAY PORT MALE TO HDMI® MALE CABLES

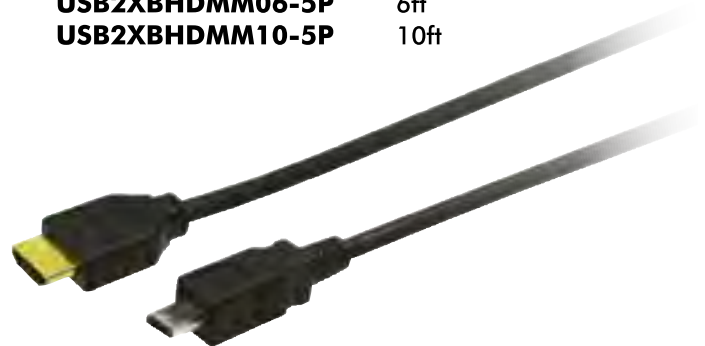
MDPHDMMM03	3ft, white
MDPHDMMM06	6ft, white
MDPHDMMM10	10ft, white
MDPHDMMM15	15ft, white



USB 2.0 MICRO B TO HDMI® MALE CABLES

For cell phone to TV

USB2XBHMMM06-5P	6ft
USB2XBHMMM10-5P	10ft



HDMI, the HDMI Logo, and High-Definition Multimedia Interface are trademarks or registered trademarks of HDMI Licensing LLC.

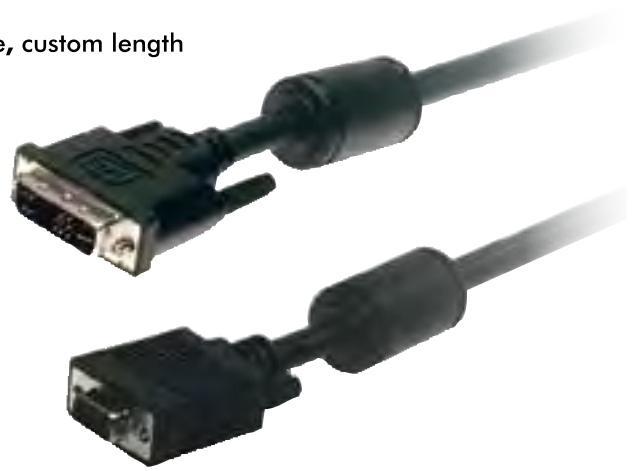
PERFORMANCE PLUS™ DVI CABLES

Shaxon stocks and manufactures a complete line of DVI cables in various configurations to connect multiple media types.

Replace **zz** with custom length and replace **X** with **F** for feet or **M** for meters.

DVI ANALOG TO VGA CABLES, MOLDED

- DVIA15MM01M** DVI-A male to DB15HD male, 1m
- DVIA15MM02M** DVI-A male to DB15HD male, 2m
- DVIA15MM03M** DVI-A male to DB15HD male, 3m
- DVIA15MM05M** DVI-A male to DB15HD male, 5m
- DVIA15MMzzX** DVI-A male to DB15HD male, custom length
- DVIA915MMzzX** DVI-A 90° male to DB15HD 180° (standard) male, custom length



DVI DIGITAL DUAL LINK CABLES, MOLDED

- DVIDLMM01M** DVI-D male to male, 1m
- DVIDLMM02M** DVI-D male to male, 2m
- DVIDLMM03M** DVI-D male to male, 3m
- DVIDLMM05M** DVI-D male to male, 5m
- DVIDLMMzzX** DVI-D male to male, custom length



DVI DIGITAL DUAL LINK EXTENSION CABLES, MOLDED

- DVIDLMFzzX** DVI-D male to DVI-D female, custom length



PERFORMANCE PLUS™ RCA AUDIO/VIDEO CABLES

Shaxon Industries, Inc. has designed its PERFORMANCE PLUS™ brand to accommodate the need for high quality, gold-plated audio/video cables. These cables primarily consist of RCA, 3.5mm and speaker application connectivity. They are engineered and designed for TV/VCR/DVD, satellite box, home stereo, sound stage recording and computer interface applications.

Replace zz with custom length and replace X with F for feet or M for meters.

Replace MM with MF for male to female or FF for female to female connectors.

RCA COMPOSITE AUDIO/VIDEO CABLES, ASSEMBLED

Includes one 75Ω video and two 24AWG audio cables (left and right) with RCA male connectors; commonly used from TV to VCR or DSS satellite systems

PRCA224175MM03	Male to male, 3ft
PRCA224175MM06	Male to male, 6ft
PRCA224175MM12	Male to male, 12ft
PRCA224175MM25	Male to male, 25ft
PRCA224175MM50	Male to male, 50ft
PRCA224175MM100	Male to male, 100ft
CRCA224175MMzzX	Male to male, custom length



RCA DUAL AUDIO CABLES, ASSEMBLED

Includes two 24AWG audio cables (left and right) with RCA male connectors; commonly used for dual audio applications

PRCA224MM03	Male to male, 3ft
PRCA224MM06	Male to male, 6ft
PRCA224MM12	Male to male, 12ft
PRCA224MM25	Male to male, 25ft
PRCA224MM50	Male to male, 50ft
PRCA224MM100	Male to male, 100ft
CRCA224MMzzX	Male to male, custom length



RCA SINGLE CHANNEL AUDIO CABLES, ASSEMBLED

Includes one 24AWG audio cable with RCA male connectors

PRCA124MM03	Male to male, 3ft
PRCA124MM06	Male to male, 6ft
PRCA124MM12	Male to male, 12ft
PRCA124MM25	Male to male, 25ft
PRCA124MM50	Male to male, 50ft
PRCA124MM100	Male to male, 100ft
CRCA124MMzzX	Male to male, custom length



PERFORMANCE PLUS™ RCA AUDIO/VIDEO CABLES

Replace zz with custom length and replace X with F for feet or M for meters.
 Replace MM with MF for male to female or FF for female to female connectors.

RCA COMPONENT VIDEO/DUAL AUDIO CABLES, ASSEMBLED

Includes three 75Ω video and two 24AWG audio cables with RCA male connectors; used for connecting the component and stereo audio output of audio/video devices to the component and stereo audio inputs of televisions, monitors or projectors, or for HDTV applications

PRCA224375MM03	Male to male, 3ft
PRCA224375MM06	Male to male, 6ft
PRCA224375MM12	Male to male, 12ft
PRCA224375MM25	Male to male, 25ft
PRCA224375MM50	Male to male, 50ft
PRCA224375MM100	Male to male, 100ft
CRCA224375MMzzX	Male to male, custom length



RCA COMPONENT VIDEO CABLES, ASSEMBLED

Includes three 75Ω video cables with RCA male connectors; used for connecting the component output of audio/video devices to the component inputs of televisions, monitors or projectors, or for HDTV applications

PRCA375MM03	Male to male, 3ft
PRCA375MM06	Male to male, 6ft
PRCA375MM12	Male to male, 12ft
PRCA375MM25	Male to male, 25ft
PRCA375MM50	Male to male, 50ft
PRCA375MM100	Male to male, 100ft
CRCA375MMzzX	Male to male, custom length



RCA SINGLE VIDEO CABLES, ASSEMBLED

Includes 75Ω video cables with RCA male connectors; used for video applications

PRCA175MM03	Male to male, 3ft
PRCA175MM06	Male to male, 6ft
PRCA175MM12	Male to male, 12ft
PRCA175MM25	Male to male, 25ft
PRCA175MM50	Male to male, 50ft
PRCA175MM100	Male to male, 100ft
CRCA175MMzzX	Male to male, custom length



PERFORMANCE PLUS™ VALUE AUDIO/VIDEO CABLES

Shaxon Industries, Inc. PERFORMANCE PLUS™ Value line of audio/video cables features our high quality PERFORMANCE PLUS™ cable combined with more economical, fully-molded RCA connectors.

Replace **zz** with custom length and replace **X** with **F** for feet or **M** for meters.

RCA COMPONENT VIDEO CABLES, MOLDED

PVRCA375MM03	Male to male, 3ft
PVRCA375MM06	Male to male, 6ft
PVRCA375MM12	Male to male, 12ft
PVRCA375MM25	Male to male, 25ft
PVRCA375MM50	Male to male, 50ft
PVRCA375MM100	Male to male, 100ft
CVRCA375MMzzX	Male to male, custom length



RCA COMPOSITE CABLES, VIDEO + LEFT & RIGHT AUDIO, MOLDED

PVRCA22475MM03	Male to male, 3ft
PVRCA22475MM06	Male to male, 6ft
PVRCA22475MM12	Male to male, 12ft
PVRCA22475MM25	Male to male, 25ft
PVRCA22475MM50	Male to male, 50ft
PVRCA22475MM100	Male to male, 100ft
CVRCA22475MMzzX	Male to male, custom length



RCA SINGLE VIDEO CABLES, MOLDED

PVRCA175MM03	Male to male, 3ft
PVRCA175MM06	Male to male, 6ft
PVRCA175MM12	Male to male, 12ft
PVRCA175MM25	Male to male, 25ft
PVRCA175MM50	Male to male, 50ft
PVRCA175MM100	Male to male, 100ft
CVRCA175MMzzX	Male to male, custom length



RCA DUAL (LEFT & RIGHT) AUDIO CABLES, MOLDED

PVRCA224MM03	Male to male, 3ft
PVRCA224MM06	Male to male, 6ft
PVRCA224MM12	Male to male, 12ft
PVRCA224MM25	Male to male, 25ft
PVRCA224MM50	Male to male, 50ft
PVRCA224MM100	Male to male, 100ft
CVRCA224MMzzX	Male to male, custom length



RCA SINGLE CHANNEL AUDIO CABLES, MOLDED

PVRCA124MM03	Male to male, 3ft
PVRCA124MM06	Male to male, 6ft
PVRCA124MM12	Male to male, 12ft
PVRCA124MM25	Male to male, 25ft
PVRCA124MM50	Male to male, 50ft
PVRCA124MM100	Male to male, 100ft
CVRCA124MMzzX	Male to male, custom length



ECONOMY AUDIO/VIDEO CABLES

Shaxon Industries, Inc. PERFORMANCE PLUS™ Economy line of audio/video cables features fully-molded RCA connectors and is designed for price sensitive applications and general purpose use.

RCA COMPOSITE CABLES, VIDEO + LEFT & RIGHT AUDIO, MOLDED

PMDAVRCAMM03	Male to male, 3ft
PMDAVRCAMM06	Male to male, 6ft
PMDAVRCAMM12	Male to male, 12ft
PMDAVRCAMM25	Male to male, 25ft
PMDAVRCAMM50	Male to male, 50ft
PMDAVRCAMM100	Male to male, 100ft



RCA DUAL (LEFT & RIGHT) AUDIO CABLES, MOLDED

PMDFRCAMM03	Male to male, 3ft
PMDFRCAMM06	Male to male, 6ft
PMDFRCAMM12	Male to male, 12ft
PMDFRCAMM25	Male to male, 25ft
PMDFRCAMM50	Male to male, 50ft
PMDFRCAMM100	Male to male, 100ft



RCA SINGLE VIDEO CABLES, MOLDED

PMVRCAMM03	Male to male, 3ft
PMVRCAMM06	Male to male, 6ft
PMVRCAMM12	Male to male, 12ft
PMVRCAMM25	Male to male, 25ft
PMVRCAMM50	Male to male, 50ft
PMVRCAMM100	Male to male, 100ft



RCA QUAD AUDIO CABLE, MOLDED

PMQRCAMM-06	Four audio channels, male to male, 6ft
--------------------	--



RCA SINGLE AUDIO CABLES, MOLDED

PMRCAMM03	Male to male, 3ft
PMRCAMM06	Male to male, 6ft
PMRCAMM12	Male to male, 12ft
PMRCAMM25	Male to male, 25ft
PMRCAMM50	Male to male, 50ft
PMRCAMM100	Male to male, 100ft



PERFORMANCE PLUS™ S-VIDEO CABLES

Our molded, super-flexible S-Video assemblies are made with dual low-loss 75Ω coax for low attenuation and capacitance specs, allowing longer runs and less loss than a typical S-Video cable. Compact design, extremely high flexibility and low profile 4-pin Mini DIN connectors allow for use in high-density environments. Custom lengths available.

Replace zz with custom length and replace X with F for feet or M for meters.

S-VIDEO CABLES, ASSEMBLED

Connects VHS/satellite or other video output device to TV

- PA75M4MMzzX** 75Ω, male to male, custom length
- PA75M4MFzzX** 75Ω, male to female, custom length



S-VIDEO CABLES, MOLDED

Connects VHS/satellite or other video output device to TV

- PM75M4MM03** 75Ω, male to male, 3ft
- PM75M4MM06** 75Ω, male to male, 6ft
- PM75M4MM12** 75Ω, male to male, 12ft
- PM75M4MM25** 75Ω, male to male, 25ft
- PM75M4MM50** 75Ω, male to male, 50ft
- PM75M4MM100** 75Ω, male to male, 100ft
- CM75M4MMzzX** 75Ω, male to male, custom length
- CM75M4MFzzX** 75Ω, male to female, custom length



S-VIDEO CABLES 90° ANGLE, ASSEMBLED

Connects VHS/satellite or other video output device to TV

- PM75M499MMzzX** 75Ω, 90° male to 90° male, custom length
- PM75M498MFzzX** 75Ω, 90° male to 180° female, custom length

PLENUM S-VIDEO CABLES, ASSEMBLED

Our plenum rated S-Video assemblies are designed for use in plenum airspace, eliminating the need for conduit. Each cable is handcrafted and 100% tested by Shaxon Industries, Inc. and utilizes our plenum cable to provide the best possible transmission of S-Video signals over long runs. Available in custom lengths. Full rolls of bulk cable sold in 1000ft put-ups.

Cable Construction

Conductors:	2 x 25 AWG solid	Diameter:	0.15 x 0.26 (oval)
Shield:	95% spiral wrapped	Capacitance:	16.2 pF/ft
Dielectric:	FEP		

S-Video (Male) to S-Video (Male or Female)

- PA75M4MMzzXP** 75Ω plenum, male to male, custom length
- PA75M4MFzzXP** 75Ω plenum, male to female, custom length
- PA75M499MMzzXP** 75Ω plenum, 90° male to 90° male, custom length



S-VIDEO + LEFT & RIGHT AUDIO COMPOSITE ASSEMBLIES

Connects VHS/satellite or other audio/video output device to TV

- PRCA224M4MMzzX** Male to male, custom length



S-VIDEO CABLES & ADAPTERS

S-VIDEO ADAPTERS & DUBBING ASSEMBLIES

These professional adapters and dubbing assemblies use low-loss, dual 75Ω coax designed and built by Shaxon Industries, Inc. They are extremely flexible and maintain the highest integrity S-Video signal. Custom configurations and lengths are available, and are normally shipped within 7-10 business days.

Replace **zz** with custom length and replace **X** with **F** for feet or **M** for meters.

S-VIDEO MALE TO DUAL BNC FEMALE

PMD4M2BNCF18I

18in cable

PMD4M2BNCFzzX

Custom length



S-VIDEO MALE TO DUAL BNC MALE

PMD4M2BNCMzzX

Custom length



S-VIDEO MALE TO DUAL RCA MALE

PMD4M2RCAMzzX

Custom length



S-VIDEO MALE TO DUAL RCA FEMALE

PMD4M2RCAFzzX

Custom length



S-VIDEO FEMALE TO BNC FEMALE

PMD4FBNCFzzX

Custom length



S-VIDEO FEMALE TO RCA FEMALE

PMD4FRCAF

Adapter



S-VIDEO FEMALE TO RCA MALE

PMD4FRCAMzzX

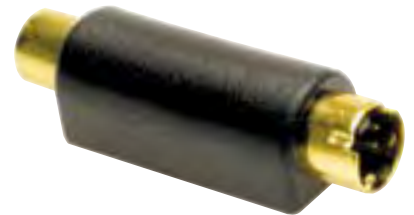
Custom length



S-VIDEO MALE TO DUAL BNC MALE

PMD4MRCAF

Adapter



S-VIDEO MALE TO RCA FEMALE

PMD4MRCAFzzX

Custom length



S-VIDEO FEMALE TO S-VIDEO FEMALE

PMD4FF

Adapter



S-VIDEO MALE TO RCA MALE

PMD4MRCAMzzX

Custom length



Custom Requirements

High performance audio and video cables are available both off-the-shelf and in custom configurations. Specify your custom S-Video cable needs from plenum cable to special wiring configurations or multi-connector breakouts. Contact your sales representative at (800) 345-8295.

CUSTOM COAXIAL CABLE ORDERING CHART

Custom Coaxial Cable Numbering System

Use the chart below to generate a part number to match your exact specifications.

Example Part Number →

P P 213 AF 98 MF 150F

MATERIAL
P = PVC
T = Plenum

CABLE TYPES

6 = RG-6	303 = RG-303
6Q = RG-6 Quad Shield	316 = RG-316
8 = RG-8	393 = RG-393
11 = RG-11	40G = RG-400
11Q = RG-11 Quad Shield	402 = RG-402
58 = RG-58	405 = RG-405
59 = RG-59	735 = RG-735
62 = RG-62	100 = LMR100
141 = RG-141	195 = LMR195
161 = RG-161	200 = LMR200
174 = RG-174	240 = LMR240
178 = RG-178	300 = LMR300
179 = RG-179	400 = LMR400
188 = RG-188	500 = LMR500
213 = RG-213	600 = LMR600
214 = RG-214	900 = LMR900
223 = RG-223	1200 = LMR1200
	1700 = LMR1700
	734 = 734A

CONNECTOR ANGLE (A and B)
9 = 90°
8 = 180°
N = No Connector

LENGTH
 Enter 3 digits from 001 to 999
UNIT OF MEASURE
F = Feet **M** = Meter **I** = Inch

CONNECTOR GENDER (A and B)
M = Male
F = Female
B = Female Bulkhead
P = Male Bulkhead

CONNECTOR TYPES (A and B)

A = BNC	N = Mini-SMB	(reverse polarity)
B = TNC	O = SHV	1 = BNC
C = N	P = Banana	2 = TNC
D = UHF	Q = Double Banana	3 = N
E = Mini UHF	R = RCA	4 = SMA
F = F Twist-On	S = 1/4in Mono	5 = MMCK
G = F Push-On	T = 3.5mm Mono	(compression)
H = Mini-Coax	U = 2.5mm Mono	6 = BNC
I = SMA	V = Bantam Mono	7 = F
J = SMB	W = Alligator Clips	8 = RCA
K = SMC	X = Unterminated	
L = MCX	Y = FME	
M = MMCX		



Assembled cables will include heat shrink as a strain relief between connector body and cable, unless otherwise specified. Slide-on boots and mold injection are also available on some connector types. Contact your sales representative at (800) 345-8295.

CUSTOM COAXIAL CABLE

Have an O.E.M or custom specialty coaxial requirement? Contact Shaxon to discuss your specific needs. Whether your requirement is RF, microwave, satellite or video, Shaxon can provide you with a solution.



PERFORMANCE PLUS™ F-TYPE

Shaxon Industries, Inc. PERFORMANCE PLUS™ line of economical and high-end F-type cables support a variety of applications including satellite, cable and consumer electronic connectivity.

Replace zz with custom length and replace X with F for feet or M for meters.

CATV QUAD-SHIELDED SINGLE VIDEO ASSEMBLIES

Assembled 75Ω RG6 video cable with snap and seal F-type connectors; commonly used for TV to VCR/DVD and satellite/cable boxes

FA6QFMMzzH Male to male, custom length



CATV SINGLE VIDEO ASSEMBLIES

Assembled 75Ω video cable with threaded F-type connectors; commonly used for TV to VCR/DVD and satellite/cable boxes

PA75FMMzzX Male to male, custom length



CATV SINGLE VIDEO OUTDOOR ASSEMBLIES

Assembled 75Ω video cable with F-connector; commonly used for outside cable hook up or satellite dish to VCR, cable or satellite box and/or output device to TV display

PAF59MMzzX RG59 male to male, custom length

PAF6MMzzX RG6 male to male, custom length



RG6 MOLDED F-TYPE CABLES

Molded F-type connectors with strain relief

PMF6MM03 Male to male, 3ft
PMF6MM06 Male to male, 6ft
PMF6MM12 Male to male, 12ft
PMF6MM25 Male to male, 25ft
PMF6MM50 Male to male, 50ft
PMF6MM100 Male to male, 100ft



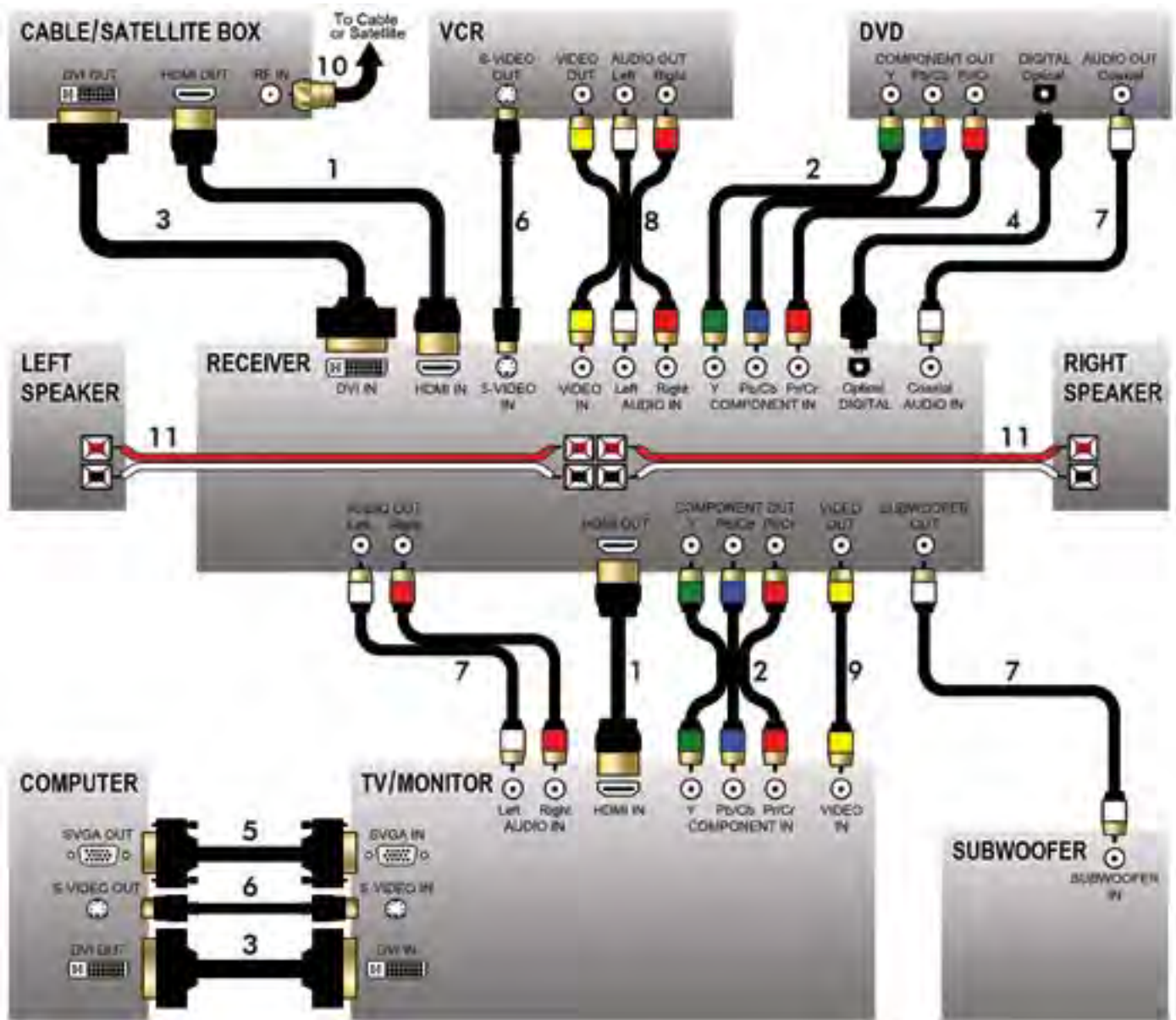
RG59 MOLDED F-TYPE CABLES

Molded F-type connectors with strain relief

PMF59MM03 Male to male, 3ft
PMF59MM06 Male to male, 6ft
PMF59MM12 Male to male, 12ft
PMF59MM25 Male to male, 25ft
PMF59MM50 Male to male, 50ft
PMF59MM100 Male to male, 100ft



AUDIO & VIDEO CABLE GUIDE



- | | | | |
|----|------------------------|--|---------------|
| 1 | HDMI® | Up to 1600p digital video & 8 channel digital audio | pg 94 |
| 2 | Component Video | Up to 1080p analog video | pg 97, 98 |
| 3 | DVI | Up to 1600p video or WQUXGA monitor, digital or analog | pg 95 |
| 4 | TOSLINK™ | Digital optical audio signal up to 125Mbit/s | pg 107 |
| 5 | SVGA | Up to WQXGA monitor, analog | pg 84, 85 |
| 6 | S-Video | Standard (576i) separated analog video | pg 100, 101 |
| 7 | RCA Audio | Analog or digital audio signal | pg 96, 98, 99 |
| 8 | RCA Composite | Standard (576i) composite analog video & stereo audio | pg 96, 98, 99 |
| 9 | RCA Video | Standard (576i) composite analog video | pg 97, 98, 99 |
| 10 | CATV | Cable, satellite TV or broadband internet signal | pg 104 |
| 11 | Speaker Wire | Unshielded single channel audio signal | pg 122 |

HDMI is a registered trademark of HDMI Licensing LLC. TOSLINK is a trademark of Toshiba America Electronic Components, Inc.

PERFORMANCE PLUS™ BNC CABLES

Replace zz with custom length and replace X with F for feet or M for meters.



RG-6 DIGITAL VIDEO BNC CABLES

For cable color other than black add one of the the following color codes to the end of the part number:
BU for blue, GN for green, RD for red or WT for white.

PBNCR6MMzzX Assembled male to male, custom length
PMBNCR6MMzzX Molded male to male, custom length



RG-59 DIGITAL VIDEO BNC CABLES

PBNCR59MMzzX Assembled male to male, custom length
PMBNCR59MMzzX Molded male to male, custom length



BNC SINGLE VIDEO

75Ω coaxial video cable; commonly used for single video security and video display applications

PBNCR75MMzzX Assembled male to male, custom length
PMBNCR75MMzzX Molded male to male, custom length



RG-59 MINI DIGITAL VIDEO BNC CABLES

PBNM59MMzzX Assembled male to male, custom length
PMBM59MMzzX Molded male to male, custom length



RCA/BNC SIGNAL VIDEO

75Ω coaxial video cable

PRCABNC175MMzzX Assembled RCA male to BNC male, custom length
PMRCABNC175MMzzX Molded RCA male to BNC male, custom length

PERFORMANCE PLUS™ TOSLINK™ PRODUCTS

TOSLINK™ SPLITTERS

PTLA-01

These splitters provide easy, flexible solutions for distributing audio signals to two devices. They allow two digital optical TOSLINK™ plugs to be used on one digital optical TOSLINK™ jack.



TOSLINK™ ADAPTERS

PTLA-03

Extension Adapter
TOSLINK™ jack to
TOSLINK™ jack



PTLA-04

Extension Adapter
3.5mm mini jack to
TOSLINK™ plug



PTLA-05

TOSLINK™ Jack to
3.5mm mini plug



TOSLINK™ CABLES



Optical TOSLINK™ to TOSLINK™ 2.2mm plastic fiber cable

PTLTLP2201MBK 1m
PTLTLP2203MBK 3m



Optical TOSLINK™ to TOSLINK™

Metal body, satin nickel color, 5.0mm plastic fiber cable

PTLTLM5001MSU 1m
PTLTLM5003MSU 3m



Optical TOSLINK™ to 3.5mm miniplug

Metal body, satin nickel color, 5.0mm plastic fiber cable

POTL35M5001MBR 1m
POTL35M5003MBR 3m

TOSLINK is a trademark of Toshiba America Electronic Components, Inc.

PERFORMANCE PLUS™ Y-ADAPTERS

Designed to interconnect a wide variety of audio and video interfaces, Shaxon's full line of Y-adapters provide economical options for common home theater and studio connectivity.



PAYCHSM2RCA

(1) Stereo 1/4in plug to (2) RCA jacks, shielded



PAYC35SM2355F

(2) 3.5mm stereo jacks to (1) 3.5mm stereo plug, shielded



PAYC35SM2RCAM

(1) 3.5mm stereo plug to (2) RCA type plugs, shielded



PAYC35SM235MF

(1) 3.5mm stereo plug to (2) 3.5mm mono jacks, shielded



PAYC35SM2RCA

(1) 3.5mm stereo plug to (2) RCA jacks, shielded



PAYC35SM235MM

(1) 3.5 mm stereo plug to two (2) 3.5mm mono plugs, shielded



PAYC35M235MF

(2) 3.5mm mono jacks to (1) 3.5mm mono plug, shielded



PAYC35MF235MM

(2) 3.5mm mono plugs to (1) 3.5mm mono jack, shielded



PAYCRCAM235MF

(1) RCA plug to (2) 3.5mm mono jacks, shielded



PAYC355F2RCAM

(1) 3.5mm stereo jack to (2) RCA-type plugs, shielded



PAYC14M2RCAF

(1) 1/4in mono plugs to (2) RCA jacks, shielded



PAYC14SM235SF

(1) 1/4in stereo plug to (2) 3.5mm stereo jacks, shielded

PERFORMANCE PLUS™ Y-ADAPTERS



PAYC14MF2RCAM
 (1) 1/4in mono jack to
 (2) RCA plugs, shielded



PAYC14SM214MF
 Y-cable (1) 1/4in stereo plug to
 (2) 1/4in mono jacks, shielded



PAYC14SF214MM
 (2) mono 1/4in plugs to
 (1) 1/4in stereo jack, shielded



PAYC14MF214MM
 (2) 1/4in mono plugs to
 (1) 1/4in mono jack, shielded



PAYC35SF235SM
 (2) 3.5mm stereo plugs to
 (1) 3.5mm stereo jack, shielded



PAYCRCAM2RCA
 (1) RCA plug to (2) RCA jacks,
 shielded



PAYRCAM2RCAM
 (1) RCA plug to (2) CA plugs,
 shielded



PAYCRCAF2RCAM
 (2) RCA plugs to (1) RCA jack,
 shielded



PAYC35SF2RCAM
 (1) 3.5mm stereo jack to
 (2) RCA plugs, shielded



PAYC35SM214SF
 (2) stereo 1/4in phone jacks to
 (1) 3.5mm stereo plug, shielded



PAYC14SM214SF
 Y-cable (1) 1/4in stereo plug to
 (2) 1/4in stereo jacks, shielded



PAYC35SM14SF
 (1) 3.5mm stereo plug to
 (1) 1/4in stereo jack, shielded



PAYC35MM14SR
 (1) 3.5mm mono plug to
 (1) 1/4in stereo jack, shielded



PAYC35MM2RCAM
 (1) 3.5mm mono plug to
 (2) RCA plugs, shielded



PAYC14SM235MM
 (1) Stereo 1/4in plug to
 (2) 3.5mm mono plugs, shielded

PERFORMANCE PLUS™ ECONOMY ¼IN & 3.5MM CABLES

Designed to interconnect a wide variety of audio and video interfaces, Shaxon's full line of Y-adapters provide economical options for common home theater and studio connectivity.

Replace zz with custom length.



¼IN STEREO PLUG TO PLUG
PM14SMMzz Custom length



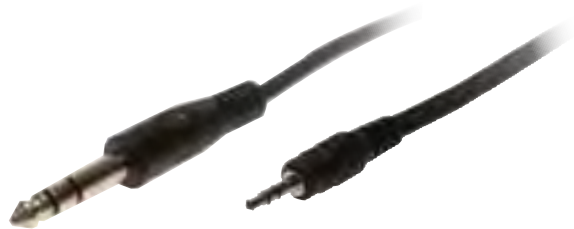
DUAL ¼IN MONO PLUG TO DUAL ¼IN MONO PLUG
PM214MMMzz Custom length



¼IN MONO PLUG TO 3.5MM STEREO PLUG
PM14M35SMMzz Custom length



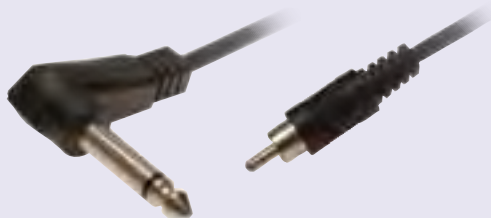
3.5MM STEREO PLUG TO 3.5MM STEREO PLUG
PM35SMM03 3ft
PM35SMM06 6ft
PM35SMM12 12ft



¼IN STEREO PLUG TO 3.5MM STEREO PLUG
PM14S35SMMzz Custom length



¼IN MONO 90° PLUG TO RCA 90° PLUG
PM14M9RCA9MMzz Custom length



¼IN MONO 90° PLUG TO RCA PLUG
PM14M9RCAMMzz Custom length



¼IN STEREO PLUG TO DUAL RCA PLUGS
PM14S2RCAMM01 1ft
PM14S2RCAMMzz Custom length

PERFORMANCE PLUS™ ¼IN & 3.5MM CABLES

Shaxon's PERFORMANCE PLUS™ audio cables are manufactured using 24AWG stranded shielded audio cable. Replace zz with custom length.



¼IN MONO PLUG TO PLUG
PA14MMMzz Custom length



¼IN STEREO PLUG TO JACK, AUDIO
PA14SMFzz Custom length



¼IN STEREO PLUG TO PLUG
PA14SMMzz Custom length



3.5MM MONO PLUG TO PLUG
PA3524MMMzz Custom length



3.5MM STEREO PLUG TO PLUG
PA3524SMMzz Custom length



3.5MM MONO PLUG TO JACK
PA3524MMFzz Custom length



3.5MM STEREO PLUG TO JACK
PA3524SMFzz Custom length



3.5MM STEREO PLUG TO DUAL 3.5MM MONO JACK
PA235M35SFMzz Custom length



3.5MM STEREO PLUG TO DUAL RCA PLUGS
PA3524S2RCAMMzz Male to (2) males, custom length
PA3524S2RCAMFzz Male to (2) females, custom length



PERFORMANCE PLUS™ SPEAKER & MIDI CABLES

Replace zz with custom length.

SPEAKON™ CABLES



- PPSS2Czz** Two-pole cable, custom length
- PPSS4Czz** Four-pole cable, custom length
- PPSS8Czz** Eight-pole cable, custom length

SPEAKON™ ADAPTER CABLES



- PPS14zz** 1/4in male, custom length
- PPS14Fzz** 1/4in female, custom length
- PPS214Fzz** (2) 1/4in female, custom length
- PPS214Mzz** (2) 1/4in male, custom length
- PPSXLRfzz** XLR female, custom length

PERFORMANCE PLUS™ SPEAKER CABLES

Assembled Audio (2) 12AWG, 1 pair speaker cables



- SC1BAN216MMzz**
Left and right channel stereo, (2) banana male
- SC2BAN216MMzz**
Left and right channel Stereo, (1) dual banana male to (1) Dual Banana male
- SCTIP216MMzz**
Left and Right Channel Stereo Cable, (2) Tip male to (2) Tip male



- SC1BNT216MMzz**
Left and Right Channel Stereo, (2) Banana male to (2) Tip male



- PPSDBPzz** Dual banana plug, custom length
- PPS2DBPzz** (2) dual banana plugs, custom length

MIDI CABLES



- PAND5MMzz**
5-pin DIN plug to plug assembled with 24AWG stranded shielded custom length cable
- PMD5MMzz**
5-pin DIN plug to plug, molded custom length cable

SpeakON is a registered trademark of Neutrik AG.

PERFORMANCE PLUS™ BANTAM CABLES

Replace zz with custom length.

Replace XX with BK for black, BU for blue, GN for green, GY for gray, OR for orange, PK for pink, PR for purple, RD for red, WT for white or YL for yellow.

BANTAM CABLES, ASSEMBLED

PBANS124MMzzBK Single bantam, custom length, black



BANTAM CABLES, MOLDED

PMBANS124MMzzXX Single bantam, custom length



DUAL BANTAM CABLES, ASSEMBLED

(2) 24AWG 1-pair + drain shielded cables zipped together; commonly used as a dual patch bay cable

PBANS224MMzzBK Dual bantam, custom length, black



DUAL BANTAM CABLES, MOLDED

(2) 24AWG 1-pair + drain shielded cables zipped together; commonly used as a dual patch bay cable

PMBANS224MMzzXX Dual bantam, custom length



PERFORMANCE PLUS™ PRO XLR

Shaxon Industries, Inc. PERFORMANCE PLUS™ XLR cables provide connectivity for a variety of professional audio, video, and stage lighting equipment. Shaxon also offers adapter cables for interfacing XLR connections to other audio media. **Replace each X with M for male or F for female to denote gender for each end of cable.**
Replace zz with custom length.

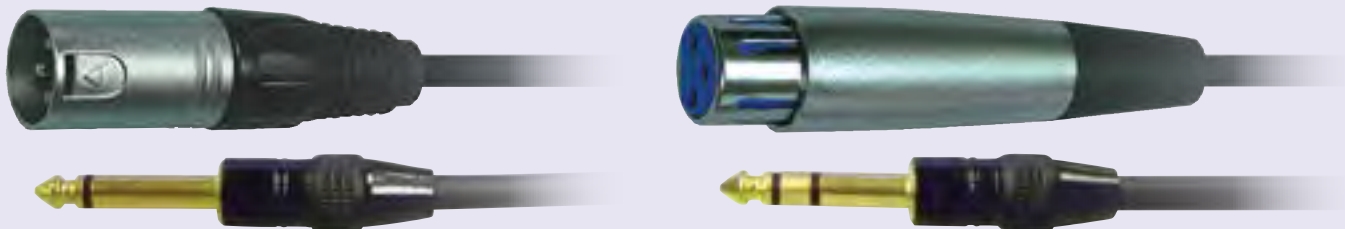
ASSEMBLED BALANCED XLR AUDIO CABLES

(1) 24AWG 1-pair + drain shielded cable; used to patch from a balanced input to a balanced output
PXLR124XXzz Custom length



ASSEMBLED XLR TO ¼IN AUDIO CABLES

(1) 24AWG 1-pair + drain shielded cable; used to connect microphones and other audio equipment



XLR TO ¼IN MONO CABLE

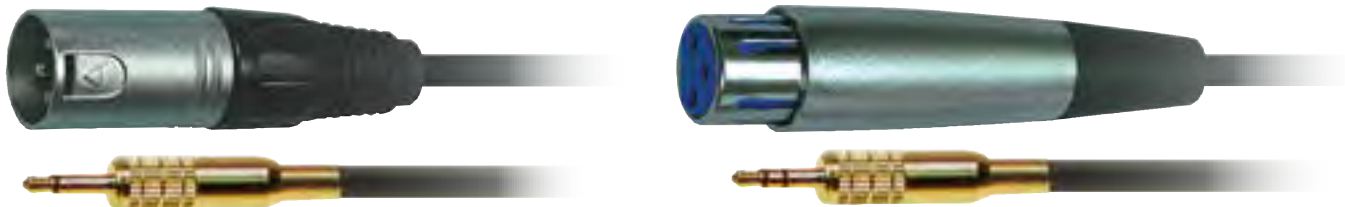
PXLR14M124XXzz Custom length

XLR TO ¼IN STEREO CABLE

PXLR14S124XXzz Custom length

ASSEMBLED XLR TO 3.5 MM AUDIO CABLES

(1) 24AWG 1pair + drain shielded cable; used to connect microphones and other audio equipment



XLR TO 3.5MM MONO CABLE

PXLR35M124XXzz Custom length

XLR TO 3.5MM STEREO CABLE

PXLR35S124XXzz Custom length

MOLDED XLR?

Shaxon can manufacture custom molded XLR cables to your precise specifications: any length, cable type, wiring requirement and connector. Shaxon's PERFORMANCE PLUS™ cables continue to redefine the high end audio and video market. Learn more about our capabilities today!

Call: (800) 345-8295.



PERFORMANCE PLUS™ CONNECTORS & ADAPTERS

F-CONNECTORS



PFMS-B-G
Male, gold with black grip and 0.24in cable opening



F-101-59GBC
F crimp on barrel type RG59

F-101-6GBC
F crimp on barrel type RG6

F-101-7781
F crimp for RG-11



F-101-59RC
F-101-6RC
F-101-59GRC
F-101-7763

F crimp with separate ring on RG59
F crimp with separate ring on RG6
F crimp with separate ring on RG59, gold
F crimp with separate ring on RG59, right angle

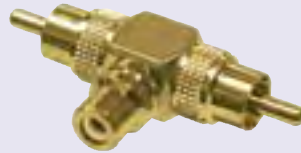
Replace z with B for black, U for blue, G for green, R for red, W for white or Y for yellow.



RCA CONNECTORS

Professional quality RCA connectors with color coded grips and 0.24in cable opening

PRCAMS-B-z Male



RCA ADAPTERS

PRCAMMF-G-G
PRCAFFM-G-G
PRCABH38-G-z

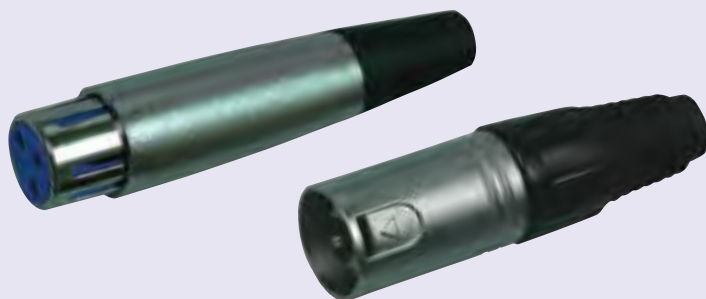
RCA jack to (2) RCA plugs, gold plated with teflon insulator
RCA jack to (2) RCA plugs, gold plated with teflon insulator
RCA to RCA bulkhead feed-through jack



1/4 INCH CONNECTORS

P14MSM1-B-G-B
Gold mono phone plug with black grip and 0.24 cable opening

P14FSM1-C-C
Slim 1/4in stereo inline phone jack with metal housing, strain relief and 0.26in cable opening



XLR CONNECTOR

PXLRFS-C-B
XLR female connector with 0.20 cable opening

PXLRMS-C-B
XLR male connector with 0.20 cable opening

PERFORMANCE PLUS™ BANANA CONNECTORS

PBANMS-G-B

Banana plug, gold with black band and 0.33in cable opening

PBANMS-G-R

Banana plug, gold with red band and 0.33in cable opening

PBANMS-Z-R

Banana plug, zinc with red band and 0.33in cable opening

PBANMS-Z-W

Banana plug, zinc with white band and 0.33in cable opening



PLBANMS-G-R

Banana plug lock-in gold with red band and 0.24in cable opening

PLBANMS-G-W

Banana plug lock-in gold with white band and 0.24in cable opening

PLBANMS-Z-R

Banana plug lock-in zinc with red band and 0.24in cable opening

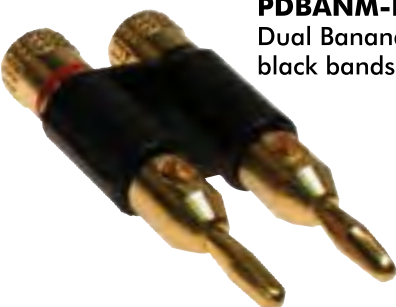
PLBANMS-Z-W

Banana plug lock-in zinc with white band and 0.24in cable opening



PDBANM-B-G-RB

Dual Banana plug, gold with red and black bands and 0.15in cable opening



PJBH-B-G

Banana post, feed-through type gold with black band

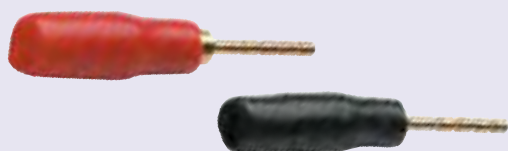


PTPS-G-R

Tip plug, gold with red grip, solder type, 0.12in cable opening

PTPS-G-B

Tip plug, gold with black grip, solder type, 0.12in cable opening

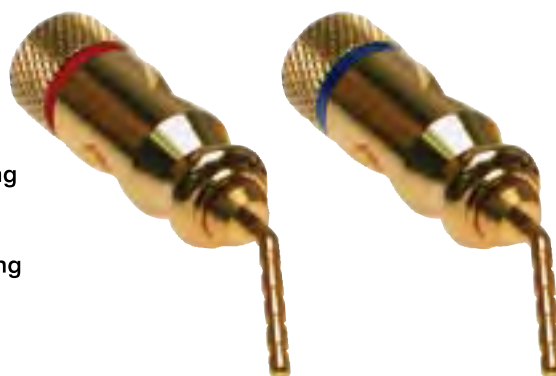


PRTIPMS-G-R

Tip plug with 45° angle pin, gold with red band and 0.24in cable opening

PRTIPMS-G-U

Tip plug with 45° angle pin gold with blue band and 0.24in cable opening



PERFORMANCE PLUS™ 3.5MM CONNECTORS



P35MSMP1-B-C

3.5mm male stereo plug with plastic handle, chrome plug and black molded strain relief



P35MSM1-C-C

3.5mm male stereo plug with chrome handle, plug and strain relief spring, 0.19in cable opening



P35FSM1-C-C

3.5mm female stereo jack with chrome handle, jack and strain relief spring, 0.19in cable opening



P35MSM3-G-G

Professional quality male 3.5mm mono plug with gold handle, plug and strain relief spring, 0.25in cable opening



P35FSM3-G-G

Professional quality female 3.5mm mono jack with gold handle, jack and strain relief spring, 0.25in cable opening



P35MSM4-G-G

Professional quality male 3.5mm stereo plug with gold handle, plug and strain relief spring, 0.25in cable opening



P35MFSM6-G-G

3.5mm female mono jack, gold plated with black body



P35MFSM1-C-C

3.5mm mono inline female jack, 2-conductor, metal housing, 0.16in cable opening



P35SFSP1-B-C

3.5mm stereo female jack, black plastic handle with strain relief, 0.19in cable opening



P35FSM2-B-C

3.5mm stereo female shielded jack, black metal finish, 0.14in cable opening



P35SFF-C-C

3.5mm stereo female to female bulkhead feed-through jack

If you don't see the connector or adapter that you are looking for consult your sales representative at:

(800) 345-8295

PERFORMANCE PLUS™ BNC CONNECTORS & ADAPTERS



BNC CONNECTORS

BNCMS-Y-G
BNCMS-B-G

Male, gold with yellow grip and 0.24 cable opening
Male, gold with black grip and 0.24 cable opening

BNC CRIMP CONNECTORS

B-101-58-3 RG58 male, 3PC crimp
B-101-59-3 RG59 male, 3PC crimp
B-101-174-3 RG174 male, 3PC crimp
BP-101-58-3 RG58 male, 3PC for plenum cable
BP-101-59-3 RG59 male, 3PC for plenum cable



2 PIECE BNC CRIMP CONNECTORS, MALE

B-101-58 RG58 male, 2PC crimp
B-101-59 RG59 male, 2PC crimp



2 PIECE BNC CRIMP CONNECTORS, FEMALE

B-102-58 RG58 female, 2PC crimp
B-102-59 RG59 female, 2PC crimp



BNC ADAPTERS



B-561
BNC adapter
female to male to female



B-564
BNC adapter
female to female to female

B-2712
BNC adapter
right angle
male to female



B-7925
BNC bulkhead
connector
female to female



B-2735
BNC female to
RCA male adapter



B-2720
BNC male to
RCA female adapter

SHIPPING POLICY:

FOB point: All orders are shipped FOB origin point unless pre-approved for FOB destination.

Shipping method: Unless specified at time of order, all shipments will be shipped pre-paid via the cheapest method or freight depending on the weight of the shipment.

Shipping Discrepancies: It is the buyer's responsibility to confirm the receipt of all items as indicated on the packing slip. Failure to report shipping discrepancies within ten (10) days of receipt will result in the order not being credited regardless of circumstances.

RMA POLICY:

All returns must have a Return Merchandise Authorization (RMA) number, must be in original condition and must be requested within thirty (30) days from the date of purchase. Any return for any reason other than defects or shipping discrepancies will be charged a fifteen percent (15%) restocking fee. Please note that CUSTOM CABLE ASSEMBLIES/CUSTOM PRODUCTS ARE NON-RETURNABLE AND NON-CANCELABLE.

INVOICE:

Invoice Receipt: In the event that the buyer does not receive any invoice by mail after ten (10) days upon receipt of shipment, the buyer shall request the invoice via registered mail, email or fax within fifteen (15) days of the billing date. Otherwise the invoice will be considered correct, full payment shall be fulfilled.

Terms Invoices: All N30 (Net 30) invoices are due thirty (30) days from shipping. All invoices become delinquent after (30) thirty days from date of shipping. As a condition of the sales agreement, a monthly finance charge of the lesser of one and a half percent (1.5%) per month or the maximum permitted by law will be added to all past due invoices until paid in full. All past due accounts over forty-five (45) days will be placed on hold until the balance is paid in full.

VENUE:

Shaxon Industries, Inc. sustains security interest on the merchandise stated above. Venue shall lie in Orange County, California, and the rights and obligations of the parties hereto shall be enforced in the state of California.

WARRANTY POLICY:

Warranty: Shaxon Industries, Inc. provides a lifetime (of the product) guarantee against defects and labor on all custom and off the shelf cables. Please note that CUSTOM CABLE ASSEMBLIES/CUSTOM PRODUCTS ARE NON-RETURNABLE AND NONCANCELABLE. Before using, buyer shall determine the suitability of the product for their intended use; buyer assumes all risks and liability in connection therewith. This warranty is not inclusive of labor for removal or reinstallation of products, and is void on any product reconfigured, installed improperly or installed in an improper environment, or misused as determined by engineering inspection of Shaxon Industries, Inc.

PAYMENT POLICY:

Shaxon Industries, Inc. accepts Visa, MasterCard, Discover, American Express, Checks and Money Orders. We do not add any credit card surcharges. Open account terms are available to qualifying resellers only - please contact your Account Manager at (800) 345-8295 for additional information.

LIMITATION OF LIABILITY:

IN NO EVENT SHALL SHAXON INDUSTRIES, INC., ITS SUBSIDIARIES OR AFFILIATES OR THEIR RESPECTIVE PARTNERS, OFFICERS, DIRECTORS, EMPLOYEES, SHAREHOLDERS, REPRESENTATIVES OR AGENTS (COLLECTIVELY, "SHAXON INDUSTRIES, INC.") BE LIABLE FOR DIRECT, SPECIAL, INCIDENTAL, CONSEQUENTIAL, PUNITIVE OR INDIRECT DAMAGES (INCLUDING BUT NOT LIMITED TO: LOSS OF DATA, USE OR PROFITS), HOWEVER CAUSED, WHETHER FOR BREACH OF CONTRACT, NEGLIGENCE, OR OTHERWISE, AND WHETHER OR NOT SHAXON INDUSTRIES, INC. HAS BEEN ADVISED OF THE POSSIBILITY OF ANY SUCH DAMAGES; YOU AGREE THAT SHAXON INDUSTRIES, INC., MAXIMUM LIABILITY FOR CERTAIN DAMAGES, SO THE ABOVE MAY NOT APPLY TO YOU TO THE EXTENT SUCH JURISDICTION'S LAW IS APPLICABLE TO THIS AGREEMENT.

Trademarks are the property of their respective owners.

©2017 Shaxon Industries, Inc. All rights reserved. The information in this document is subject to change without notice.