

PREMISE WIRING PRODUCTS
FIBER OPTIC CONNECTIVITY
PERIPHERAL CABLES
O.E.M. / CUSTOM CABLES
AUDIO / VIDEO CABLES
BULK CABLE & CONNECTORS

GLOBAL SOURCING CALIFORNIA MANUFACTURING

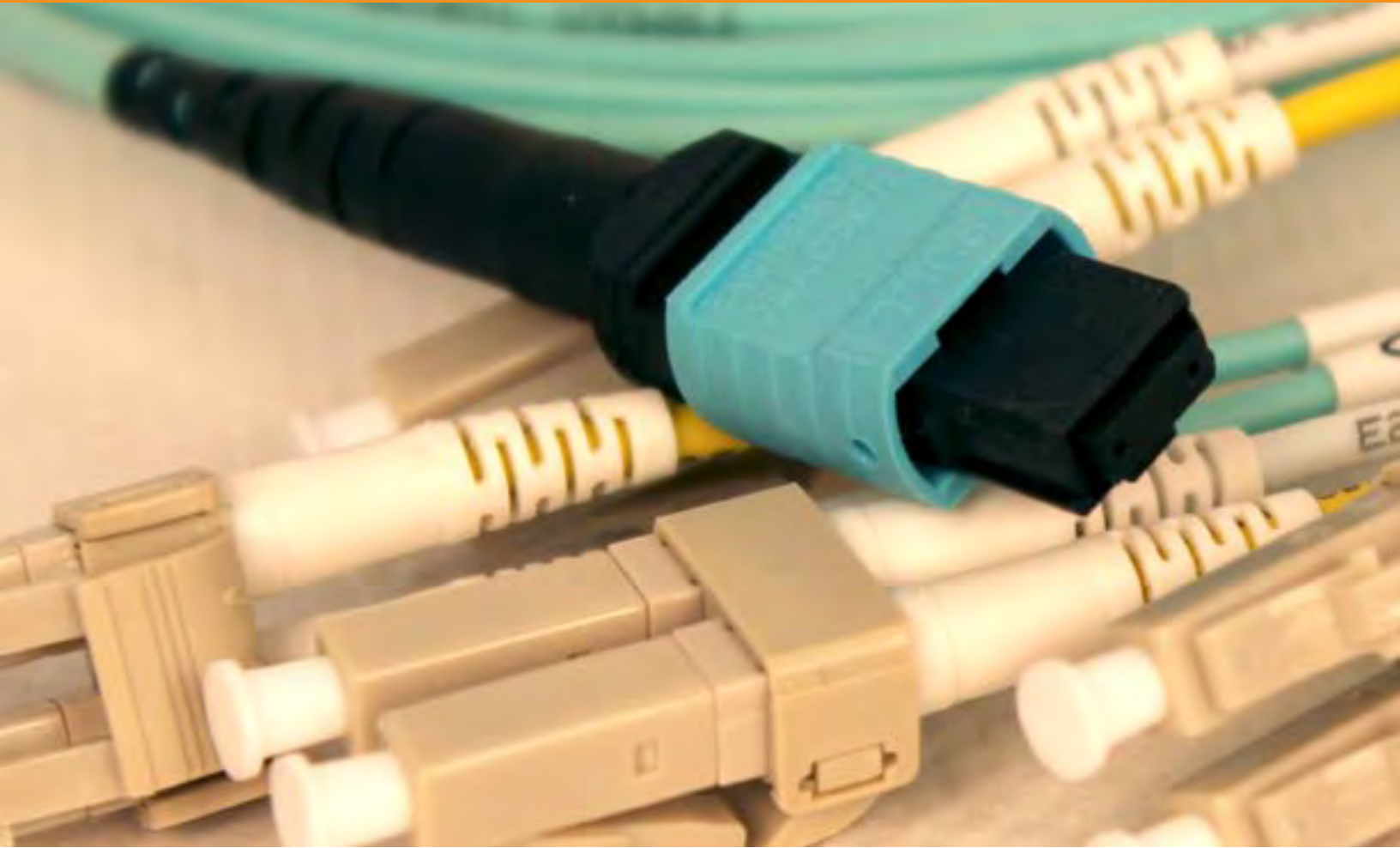


Shaxon Industries, Inc.

Customer Service, Quality Products & Custom Manufacturing Since 1978

4852 E. La Palma Ave. Anaheim CA 92807 • Phone: (800) 345-8295 • Fax: (800) 345-5106 • www.shaxon.com

FIBER OPTICS



- 48 10 Gigabit Assemblies**
- 49 Mode Conditioning Cable**
- 51 62.5/125 μ m Patch Cables**
- 54 50/125 μ m Patch Cables**
- 57 9/125 μ m Patch Cables**
- 59 MTP Multi-strand**
- 60 Connectors & Loopback Modules**
- 61 Adapters**
- 62 Custom Patch Cable Ordering Chart**

10 GIGABIT FIBER ASSEMBLIES

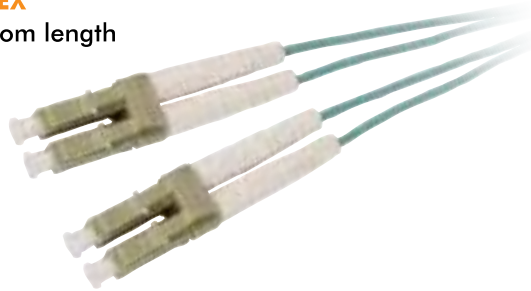
Shaxon 10 Gigabit fiber assemblies feature high-performance fiber that meets IEEE 802.3 10 Gigabit Ethernet requirements as well as IEC-60793-2-10 and TIA-492AAAC specifications for laser bandwidth differential mode delay (DMD) specifications. Shaxon's OM3 multimode fiber optic patch cords feature a standard 50/125 micron core and cladding with a PVC (OFNR, riser-rated) duplex zip jacket. Jacketing is available in 1.6mm and 3mm depending on the connectors chosen for the application. The fiber core is laser-optimized to allow 10 Gigabit applications to distances up to 300m and is capable of handling all the same applications as OM1 and OM2 fibers. OM3 is an ideal choice for future application standards for 40 Gigabit and 100 Gigabit Ethernet. Aqua cable jacket and packaging

Replace zzz with custom length and replace X with F for feet or M for meters.

LC/LC 10 GIGABIT DUPLEX

MM02Z7AQzzzX PVC, custom length

- FCLCLCQ01M 1m
- FCLCLCQ02M 2m
- FCLCLCQ03M 3m
- FCLCLCQ04M 4m
- FCLCLCQ05M 5m
- FCLCLCQ06M 6m
- FCLCLCQ07M 7m
- FCLCLCQ10M 10m
- FCLCLCQ15M 15m



- FCLCLCQ20M 20m
- FCLCLCQ30M 30m

LC/LC 10 GIGABIT SIMPLEX

LL01S7AQzzzX PVC, custom length



SC/LC 10 GIGABIT DUPLEX

CM02Z7AQzzzX PVC, custom length

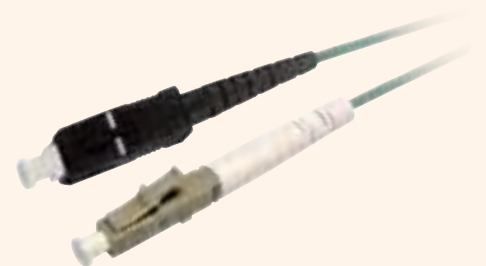
- FCSCLCQ01M 1m
- FCSCLCQ02M 2m
- FCSCLCQ03M 3m
- FCSCLCQ04M 4m
- FCSCLCQ05M 5m
- FCSCLCQ06M 6m
- FCSCLCQ07M 7m
- FCSCLCQ10M 10m
- FCSCLCQ15M 15m



- FCSCLCQ20M 20m
- FCSCLCQ30M 30m

SC/LC 10 GIGABIT SIMPLEX

AC01S7AQzzzX PVC, custom length



SC/SC 10 GIGABIT DUPLEX

CC02Z7AQzzzX PVC, custom length

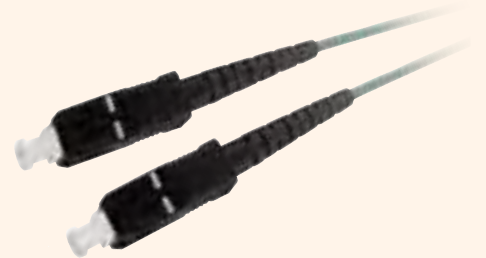
- FCSCSCQ01M 1m
- FCSCSCQ02M 2m
- FCSCSCQ03M 3m
- FCSCSCQ04M 4m
- FCSCSCQ05M 5m
- FCSCSCQ06M 6m
- FCSCSCQ07M 7m
- FCSCSCQ10M 10m
- FCSCSCQ15M 15m



- FCSCSCQ20M 20m
- FCSCSCQ30M 30m

SC/SC 10 GIGABIT SIMPLEX

CC01S7AQzzzX PVC, custom length



Note: To order different colors, jacket types or other options refer to the fiber optic patch cable ordering chart on page 62.

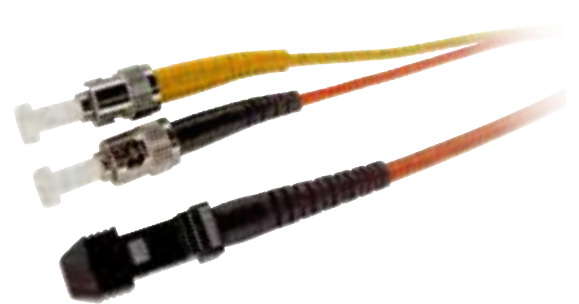
MODE CONDITIONING FIBER OPTIC CABLE



Mode conditioning patch cables allow 1000Base-LX ethernet to be run over a multi-mode fiber optic backbone by offsetting signal loss. Choose from a variety of connector types to match the device/backbone environment.
Replace zzz with custom length.
Replace X with F for feet or M for meters.

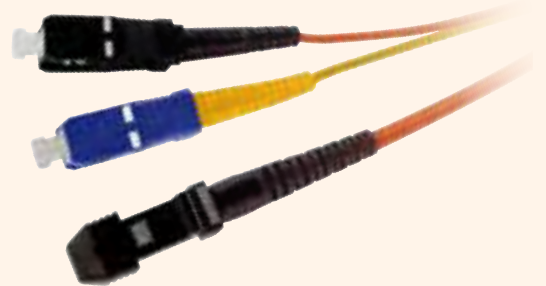
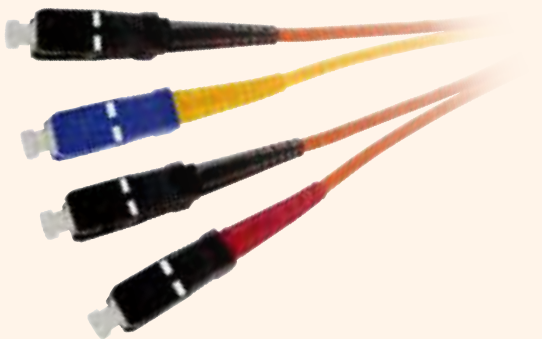
ST/ST MODE CONDITIONING DUPLEX
AA02MCAAzzzX Custom length

ST/MTRJ MODE CONDITIONING DUPLEX
AS02MCAAzzzX ST mode side, custom length



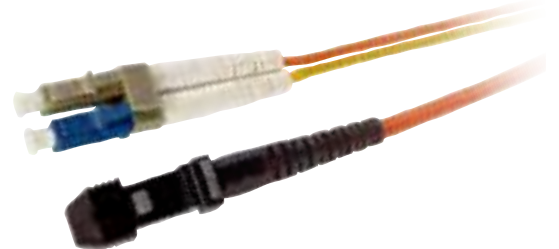
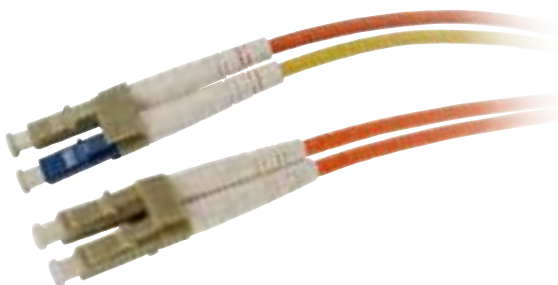
SC/SC MODE CONDITIONING DUPLEX
CC02MCAAzzzX Custom length

SC/MTRJ MODE CONDITIONING DUPLEX
CS02MCAAzzzX SC mode side, custom length



LC/LC MODE CONDITIONING DUPLEX
MM02MCAAzzzX Custom length

LC/MTRJ MODE CONDITIONING DUPLEX
MS02MCAAzzzX LC mode side, custom length



Note: To order different colors, jacket types or other options refer to the fiber optic patch cable ordering chart on page 62.

MODE CONDITIONING FIBER OPTIC CABLE

Replace zzz with custom length and replace X with F for feet or M for meters.

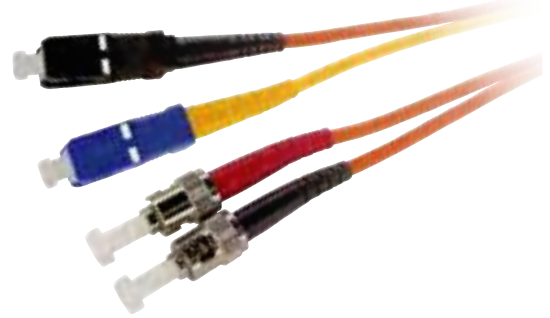
ST/SC Mode Conditioning Duplex

AC02MCAAzzzX ST mode side, custom length



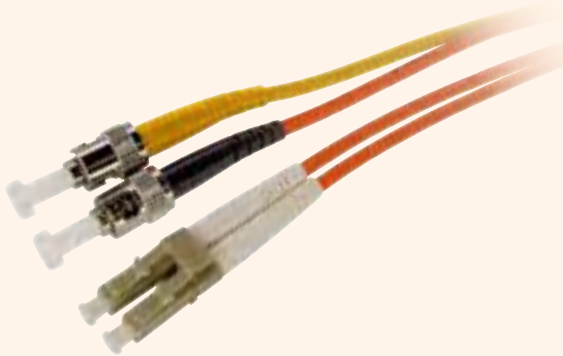
ST/SC Mode Conditioning Duplex

CA02MCAAzzzX SC mode side, custom length



ST/LC Mode Conditioning Duplex

AM02MCAAzzzX ST mode side, custom length



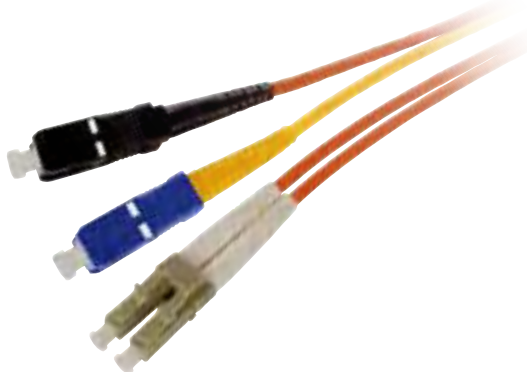
ST/LC Mode Conditioning Duplex

MA02MCAAzzzX LC mode side, custom length



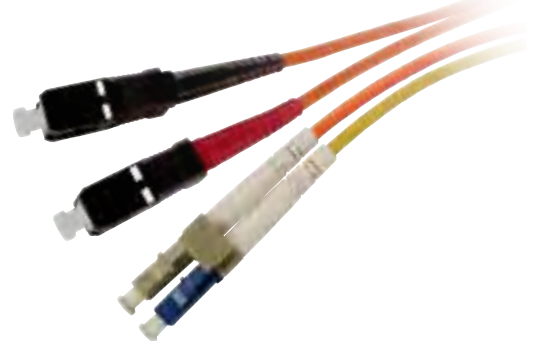
SC/LC Mode Conditioning Duplex

CM02MCAAzzzX SC mode side, custom length



SC/LC Mode Conditioning Duplex

MC02MCAAzzzX LC mode side, custom length



Note: To order different colors, jacket types or other options refer to the fiber optic patch cable ordering chart on page 62.

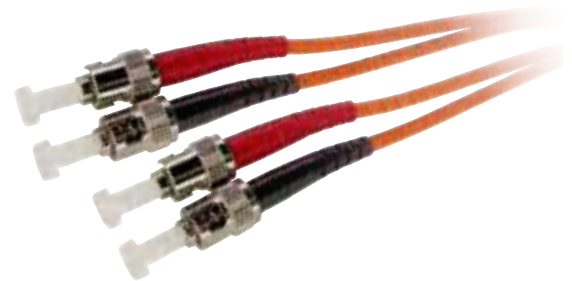
62.5/125µm FIBER OPTIC PATCH CABLE

Shaxon's OM1 multi-mode fiber optic patch cords feature a standard 62.5/125 micron core and cladding with a PVC (OFNR, riser-rated) duplex zip jacket. Applications include 10 Gigabit Ethernet (up to 33m), Gigabit Ethernet, fast ethernet, fiber channel, Infiniband®, ATM and Gigabit Ethernet. Shaxon's graded-index 62.5/125µm multi-mode fiber cables feature reduced dispersion and increased bandwidth and are perfect for a variety of network applications. In addition to the connector options shown, 62.5/125µm cables can be terminated with any industry standard connector. Orange packaging
Replace zzz with custom length and replace X with F for feet or M for meters.

ST/ST 62.5/125µm MULTI-MODE DUPLEX

AA02Z6AAzzzX PVC, custom length

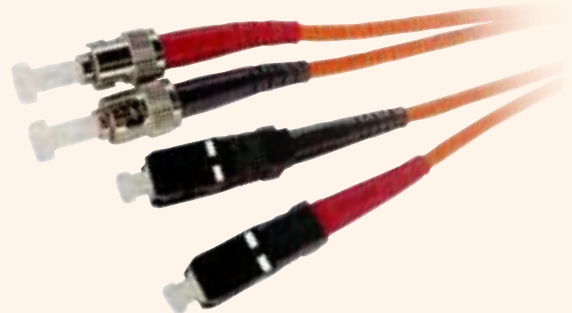
FCSTST01M	1m	FCSTST07M	7m
FCSTST02M	2m	FCSTST10M	10m
FCSTST03M	3m	FCSTST15M	15m
FCSTST04M	4m	FCSTST20M	20m
FCSTST05M	5m	FCSTST30M	30m
FCSTST06M	6m		



ST/SC 62.5/125µm MULTI-MODE DUPLEX

AC02Z6AAzzzX PVC, custom length

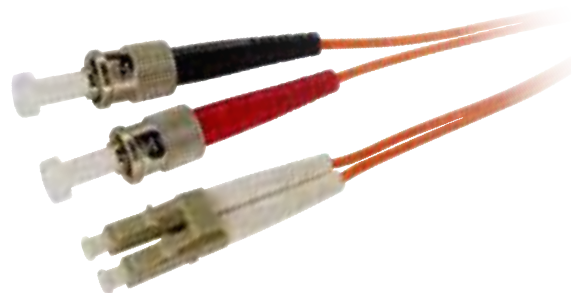
FCSTSC01M	1m	FCSTSC07M	7m
FCSTSC02M	2m	FCSTSC10M	10m
FCSTSC03M	3m	FCSTSC15M	15m
FCSTSC04M	4m	FCSTSC20M	20m
FCSTSC05M	5m	FCSTSC30M	30m
FCSTSC06M	6m		



ST/LC 62.5/125µm MULTI-MODE DUPLEX

AM02Z6AAzzzX PVC, custom length

FCSTLC01M	1m	FCSTLC07M	7m
FCSTLC02M	2m	FCSTLC10M	10m
FCSTLC03M	3m	FCSTLC15M	15m
FCSTLC04M	4m	FCSTLC20M	20m
FCSTLC05M	5m	FCSTLC30M	30m
FCSTLC06M	6m		



Note: To order different colors, jacket types or other options refer to the fiber optic patch cable ordering chart on page 62.

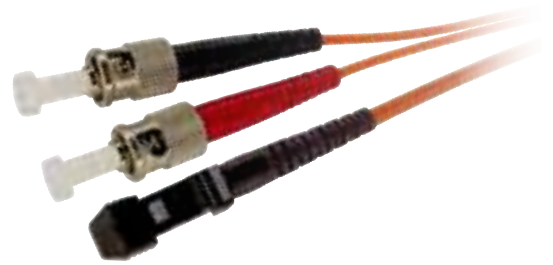
62.5/125µm FIBER OPTIC PATCH CABLE

Replace zzz with custom length and replace X with F for feet or M for meters.

ST/MTRJ 62.5/125µm MULTI-MODE DUPLEX

AS02Z6AAzzzX PVC, custom length

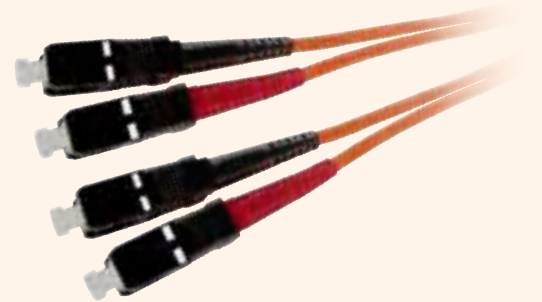
FCSTMT01M	1m	FCSTMT07M	7m
FCSTMT02M	2m	FCSTMT10M	10m
FCSTMT03M	3m	FCSTMT15M	15m
FCSTMT04M	4m	FCSTMT20M	20m
FCSTMT05M	5m	FCSTMT30M	30m
FCSTMT06M	6m		



SC/SC 62.5/125µm MULTI-MODE DUPLEX

CC02Z6AAzzzX PVC, custom length

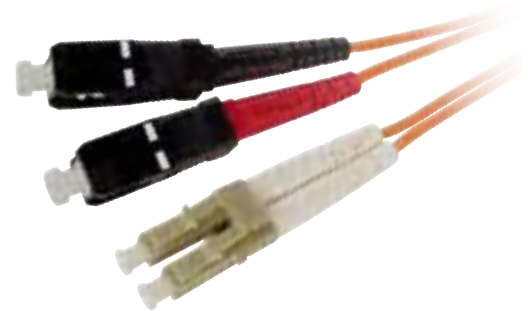
FCSCSC01M	1m	FCSCSC07M	7m
FCSCSC02M	2m	FCSCSC10M	10m
FCSCSC03M	3m	FCSCSC15M	15m
FCSCSC04M	4m	FCSCSC20M	20m
FCSCSC05M	5m	FCSCSC30M	30m
FCSCSC06M	6m		



SC/LC 62.5/125µm MULTI-MODE DUPLEX

CM02Z6AAzzzX PVC, custom length

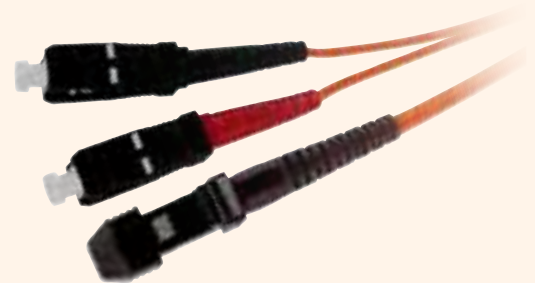
FCSCLC01M	1m	FCSCLC07M	7m
FCSCLC02M	2m	FCSCLC10M	10m
FCSCLC03M	3m	FCSCLC15M	15m
FCSCLC04M	4m	FCSCLC20M	20m
FCSCLC05M	5m	FCSCLC30M	30m
FCSCLC06M	6m		



SC/MTRJ 62.5/125µm MULTI-MODE DUPLEX

CS02Z6AAzzzX PVC, custom length

FCSCMT01M	1m	FCSCMT07M	7m
FCSCMT02M	2m	FCSCMT10M	10m
FCSCMT03M	3m	FCSCMT15M	15m
FCSCMT04M	4m	FCSCMT20M	20m
FCSCMT05M	5m	FCSCMT30M	30m
FCSCMT06M	6m		



Note: To order different colors, jacket types or other options refer to the fiber optic patch cable ordering chart on page 62.

62.5/125µm FIBER OPTIC PATCH CABLE

Replace zzz with custom length and replace X with F for feet or M for meters.

LC/LC 62.5/125µm MULTI-MODE DUPLEX

MM02Z6AAzzzX PVC, custom length

FCLCLC01M	1m	FCLCLC07M	7m
FCLCLC02M	2m	FCLCLC10M	10m
FCLCLC03M	3m	FCLCLC15M	15m
FCLCLC04M	4m	FCLCLC20M	20m
FCLCLC05M	5m	FCLCLC30M	30m
FCLCLC06M	6m		



LC/MTRJ 62.5/125µm MULTI-MODE DUPLEX

MS02Z6AAzzzX PVC, custom length

FCLCMT01M	1m	FCLCMT07M	7m
FCLCMT02M	2m	FCLCMT10M	10m
FCLCMT03M	3m	FCLCMT15M	15m
FCLCMT04M	4m	FCLCMT20M	20m
FCLCMT05M	5m	FCLCMT30M	30m
FCLCMT06M	6m		



MTRJ/MTRJ 62.5/125µm MULTI-MODE DUPLEX

SS02M6AAzzzX PVC, custom length

FCMTMT01M	1m	FCMTMT07M	7m
FCMTMT02M	2m	FCMTMT10M	10m
FCMTMT03M	3m	FCMTMT15M	15m
FCMTMT04M	4m	FCMTMT20M	20m
FCMTMT05M	5m	FCMTMT30M	30m
FCMTMT06M	6m		



Note: To order different colors, jacket types or other options refer to the fiber optic patch cable ordering chart on page 62.

50/125µm FIBER OPTIC PATCH CABLE

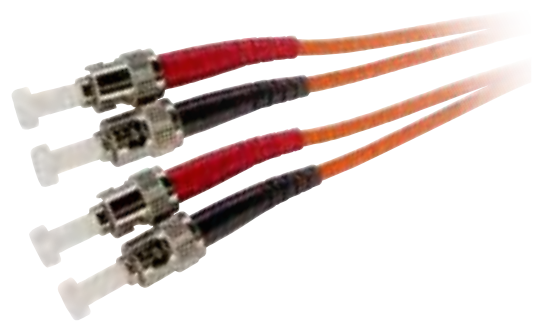
Shaxon's graded-index 50/125µm multi-mode fiber cables feature reduced dispersion and increased bandwidth, and are perfect for a variety of network applications. In addition to the connector options shown, 50/125µm cables can be terminated with any industry standard connector. Shaxon's OM2 multimode fiber optic patch cords feature a standard 50/125 micron core and cladding with a PVC (OFNR, riser-rated) Duplex zip jacket. Jacketing is available in 1.6 and 3mm depending on the connectors chosen for the application. Supports longer distances with lower loss than OM1 fiber. Applications include 10 Gigabit Ethernet (up to 82 meters), Gigabit Ethernet, fiber channel, Infiniband®, ATM, and internet protocol applications. Orange packaging

Replace zzz with custom length and replace X with F for feet or M for meters.

ST/ST 50/125µm MULTI-MODE DUPLEX

AA02Z5AAzzzX PVC, custom length

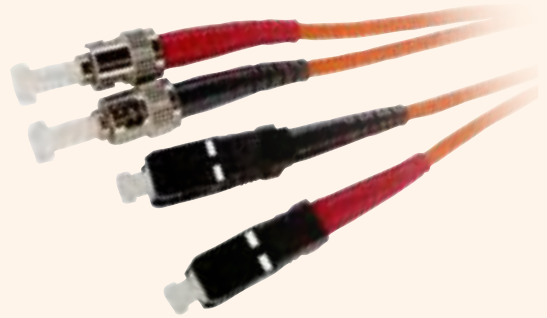
FCSTSTF01M	1m	FCSTSTF07M	7m
FCSTSTF02M	2m	FCSTSTF10M	10m
FCSTSTF03M	3m	FCSTSTF15M	15m
FCSTSTF04M	4m	FCSTSTF20M	20m
FCSTSTF05M	5m	FCSTSTF30M	30m
FCSTSTF06M	6m		



ST/SC 50/125µm MULTI-MODE DUPLEX

AC02Z5AAzzzX PVC, custom length

FCSTSCF01M	1m	FCSTSCF07M	7m
FCSTSCF02M	2m	FCSTSCF10M	10m
FCSTSCF03M	3m	FCSTSCF15M	15m
FCSTSCF04M	4m	FCSTSCF20M	20m
FCSTSCF05M	5m	FCSTSCF30M	30m
FCSTSCF06M	6m		



ST/LC 50/125µm MULTI-MODE DUPLEX

AM02Z5AAzzzX PVC, custom length

FCSTLCF01M	1m	FCSTLCF07M	7m
FCSTLCF02M	2m	FCSTLCF10M	10m
FCSTLCF03M	3m	FCSTLCF15M	15m
FCSTLCF04M	4m	FCSTLCF20M	20m
FCSTLCF05M	5m	FCSTLCF30M	30m
FCSTLCF06M	6m		



Note: To order different colors, jacket types or other options refer to the fiber optic patch cable ordering chart on page 62.

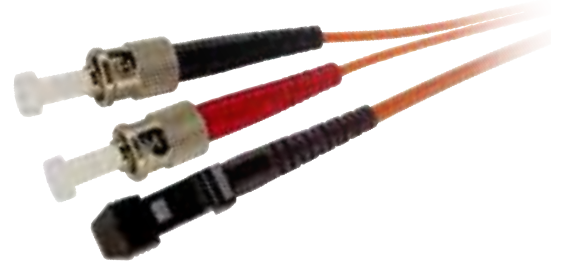
50/125µm FIBER OPTIC PATCH CABLE

Replace zzz with custom length and replace X with F for feet or M for meters.

ST/MTRJ 50/125µm MULTI-MODE DUPLEX

AS02Z5AAzzzX PVC, custom length

FCSTMTF01M	1m	FCSTMTF07M	7m
FCSTMTF02M	2m	FCSTMTF10M	10m
FCSTMTF03M	3m	FCSTMTF15M	15m
FCSTMTF04M	4m	FCSTMTF20M	20m
FCSTMTF05M	5m	FCSTMTF30M	30m
FCSTMTF06M	6m		



SC/SC 50/125µm MULTI-MODE DUPLEX

CC02Z5AAzzzX PVC, custom length

FCSCSCF01M	1m	FCSCSCF07M	7m
FCSCSCF02M	2m	FCSCSCF10M	10m
FCSCSCF03M	3m	FCSCSCF15M	15m
FCSCSCF04M	4m	FCSCSCF20M	20m
FCSCSCF05M	5m	FCSCSCF30M	30m
FCSCSCF06M	6m		



SC/LC 50/125µm MULTI-MODE DUPLEX

CM02Z5AAzzzX PVC, custom length

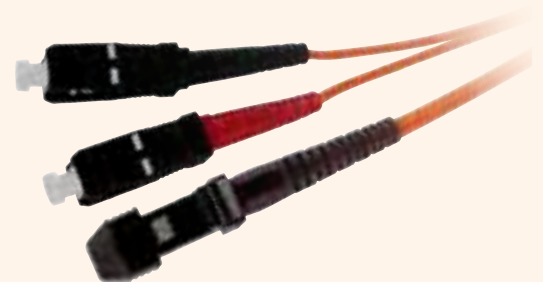
FCSCLCF01M	1m	FCSCLCF07M	7m
FCSCLCF02M	2m	FCSCLCF10M	10m
FCSCLCF03M	3m	FCSCLCF15M	15m
FCSCLCF04M	4m	FCSCLCF20M	20m
FCSCLCF05M	5m	FCSCLCF30M	30m
FCSCLCF06M	6m		



SC/MTRJ 50/125µm MULTI-MODE DUPLEX

CS02Z5AAzzzX PVC, custom length

FCSCMTF01M	1m	FCSCMTF07M	7m
FCSCMTF02M	2m	FCSCMTF10M	10m
FCSCMTF03M	3m	FCSCMTF15M	15m
FCSCMTF04M	4m	FCSCMTF20M	20m
FCSCMTF05M	5m	FCSCMTF30M	30m
FCSCMTF06M	6m		



Note: To order different colors, jacket types or other options refer to the fiber optic patch cable ordering chart on page 62.

50/125µm FIBER OPTIC PATCH CABLE

Replace zzz with custom length and replace X with F for feet or M for meters.

LC/LC 50/125µm MULTI-MODE DUPLEX

MM02Z5AAzzzX PVC, custom length

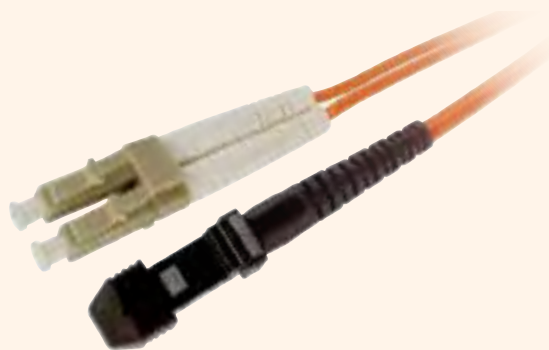
FCLCLCF01M	1m	FCLCLCF07M	7m
FCLCLCF02M	2m	FCLCLCF10M	10m
FCLCLCF03M	3m	FCLCLCF15M	15m
FCLCLCF04M	4m	FCLCLCF20M	20m
FCLCLCF05M	5m	FCLCLCF30M	30m
FCLCLCF06M	6m		



LC/MT 50/125µm MULTI-MODE DUPLEX

MS02M5AAzzzX PVC, custom length

FCLCMTF01M	1m	FCLCMTF07M	7m
FCLCMTF02M	2m	FCLCMTF10M	10m
FCLCMTF03M	3m	FCLCMTF15M	15m
FCLCMTF04M	4m	FCLCMTF20M	20m
FCLCMTF05M	5m	FCLCMTF30M	30m
FCLCMTF06M	6m		



MTRJ/MTRJ 50/125µm MULTI-MODE DUPLEX

SS02Z5AAzzzX PVC, custom length

FCMTMTF01M	1m	FCMTMTF07M	7m
FCMTMTF02M	2m	FCMTMTF10M	10m
FCMTMTF03M	3m	FCMTMTF15M	15m
FCMTMTF04M	4m	FCMTMTF20M	20m
FCMTMTF05M	5m	FCMTMTF30M	30m
FCMTMTF06M	6m		



Note: To order different colors, jacket types or other options refer to the fiber optic patch cable ordering chart on page 62.

9/125µm FIBER OPTIC PATCH CABLE

For the ultimate in high-bandwidth, low-loss performance, specify Shaxon single-mode fiber optic patch cables. Single-mode fiber is commonly used in long distance communications networks and inter-building applications. Shaxon's OS1 single mode fiber optic patch cords feature a standard 9/125 micron core and cladding with a PVC (OFNR, riser-rated) Duplex zip jacket. Applications include 10 Gigabit Ethernet, Gigabit Ethernet, SONET, fiber channel, and ATM. Intended for use with laser light sources only. Yellow packaging
Replace zzz with custom length and replace X with F for feet or M for meters.

ST/ST SINGLE-MODE DUPLEX

AA02Z0AGzzzX PVC, custom length

FCSTSTS01M	1m	FCSTSTS07M	7m
FCSTSTS02M	2m	FCSTSTS10M	10m
FCSTSTS03M	3m	FCSTSTS15M	15m
FCSTSTS04M	4m	FCSTSTS20M	20m
FCSTSTS05M	5m	FCSTSTS30M	30m
FCSTSTS06M	6m		



ST/SC SINGLE-MODE DUPLEX

AC02Z0AGzzzX PVC, custom length

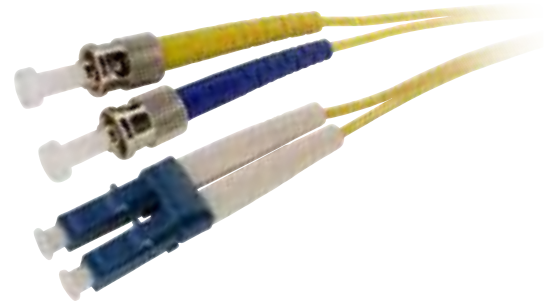
FCSTSCS01M	1m	FCSTSCS07M	7m
FCSTSCS02M	2m	FCSTSCS10M	10m
FCSTSCS03M	3m	FCSTSCS15M	15m
FCSTSCS04M	4m	FCSTSCS20M	20m
FCSTSCS05M	5m	FCSTSCS30M	30m
FCSTSCS06M	6m		



ST/LC SINGLE-MODE DUPLEX

AM02Z0AGzzzX PVC, custom length

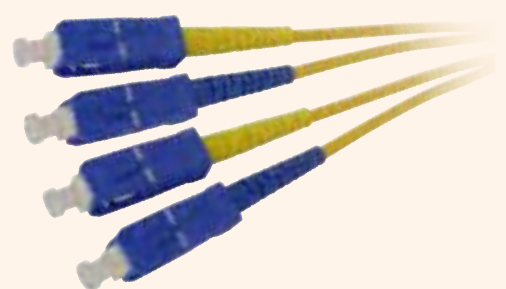
FCSTLCS01M	1m	FCSTLCS07M	7m
FCSTLCS02M	2m	FCSTLCS10M	10m
FCSTLCS03M	3m	FCSTLCS15M	15m
FCSTLCS04M	4m	FCSTLCS20M	20m
FCSTLCS05M	5m	FCSTLCS30M	30m
FCSTLCS06M	6m		



SC/SC SINGLE-MODE DUPLEX

CC02Z0AGzzzX PVC, custom length

FCSCSCS01M	1m	FCSCSCS07M	7m
FCSCSCS02M	2m	FCSCSCS10M	10m
FCSCSCS03M	3m	FCSCSCS15M	15m
FCSCSCS04M	4m	FCSCSCS20M	20m
FCSCSCS05M	5m	FCSCSCS30M	30m
FCSCSCS06M	6m		



Note: To order different colors, jacket types or other options refer to the fiber optic patch cable ordering chart on page 62.

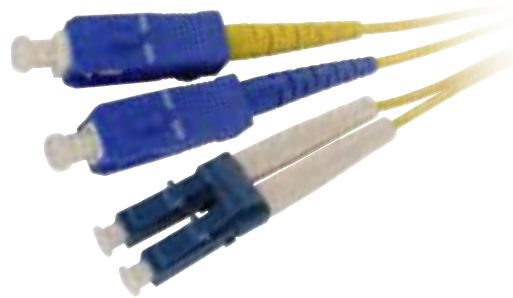
9/125µm FIBER OPTIC PATCH CABLE

Replace zzz with custom length and replace X with F for feet or M for meters.

SC/LC SINGLE-MODE DUPLEX

CM02Z0AGzzzX PVC, custom length

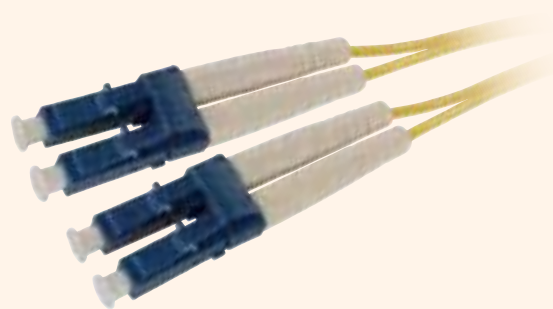
FCSC LCS01M	1m	FCSC LCS07M	7m
FCSC LCS02M	2m	FCSC LCS10M	10m
FCSC LCS03M	3m	FCSC LCS15M	15m
FCSC LCS04M	4m	FCSC LCS20M	20m
FCSC LCS05M	5m	FCSC LCS30M	30m
FCSC LCS06M	6m		



LC/LC SINGLE-MODE DUPLEX

MM02Z0AGzzzX PVC, custom length

FCLCLCS01M	1m	FCLCLCS07M	7m
FCLCLCS02M	2m	FCLCLCS10M	10m
FCLCLCS03M	3m	FCLCLCS15M	15m
FCLCLCS04M	4m	FCLCLCS20M	20m
FCLCLCS05M	5m	FCLCLCS30M	30m
FCLCLCS06M	6m		



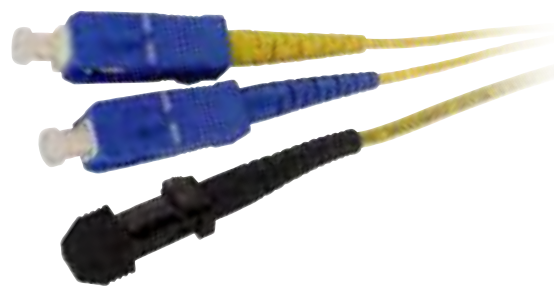
ST/MTRJ SINGLE-MODE DUPLEX

AS02M0AGzzzX PVC, custom length



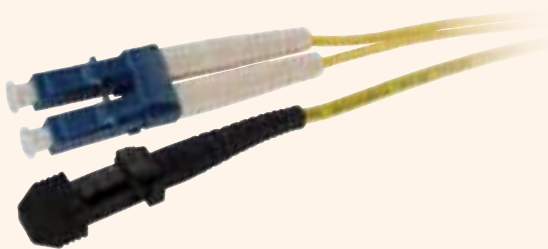
SC/MTRJ SINGLE-MODE DUPLEX

CS02Z0AGzzzX PVC, custom length



LC/MTRJ SINGLE-MODE DUPLEX

MS02M0AGzzzX PVC, custom length



MTRJ/MTRJ SINGLE-MODE DUPLEX

SS02Z0AGzzzX PVC, custom length



Note: To order different colors, jacket types or other options refer to the fiber optic patch cable ordering chart on page 62.

MTP MULTI-STRAND FIBER

The MTP connector is closely related to the MTRJ SFF (Small Form Factor) fiber connector, but can be terminated with 6 to 12 fibers - ideal for high-density backbone applications. The MTP connector features a sliding sleeve-locking mechanism rather than a push-pull latch allowing for easier plugging and unplugging. Male and female versions of the MTP are available, and can be differentiated by the two alignment pins protruding from the end of the male connector ferrule.

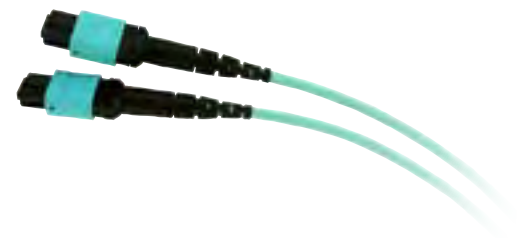
- Durable space-saving design for zone and backbone applications
- Most compact multi-fiber connector design on the market
- Available as a fan-out cable or as a patch cable

Shaxon uses MTP male and female connectors to make MTP/MTP, MTP/SC, MTP/ST, MTP/LC, MTP/FC, MTP/MU, and MTP/MTRJ fiber assemblies. Ask your sales representative for more details.

MTP/MTP

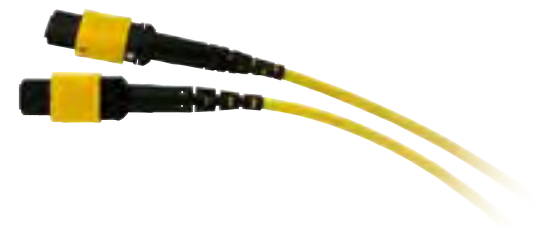
Plenum Jacket 12fiber OM4 10Gig B wiring spec

FCMFMF12BP801M	1m	FCMFMF12BP815M	15m
FCMFMF12BP802M	2m	FCMFMF12BP830M	30m
FCMFMF12BP803M	3m	FCMFMF12BP850M	50m
FCMFMF12BP805M	5m	FCMFMF12BP8100M	100m
FCMFMF12BP810M	10m		



Plenum Jacket 12fiber Single Mode B wiring spec

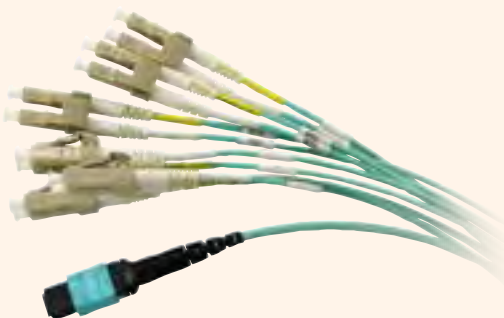
FCMFMF12BPS01M	1m	FCMFMF12BPS15M	15m
FCMFMF12BPS02M	2m	FCMFMF12BPS30M	30m
FCMFMF12BPS03M	3m	FCMFMF12BPS50M	50m
FCMFMF12BPS05M	5m	FCMFMF12BPS100M	100m
FCMFMF12BPS10M	10m		



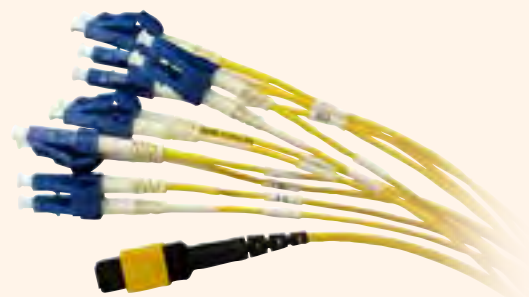
MTP/LC

Plenum Jacket

Contact your sales representative for available MTP/MPO versions of this cable including QFSP and break out cables.



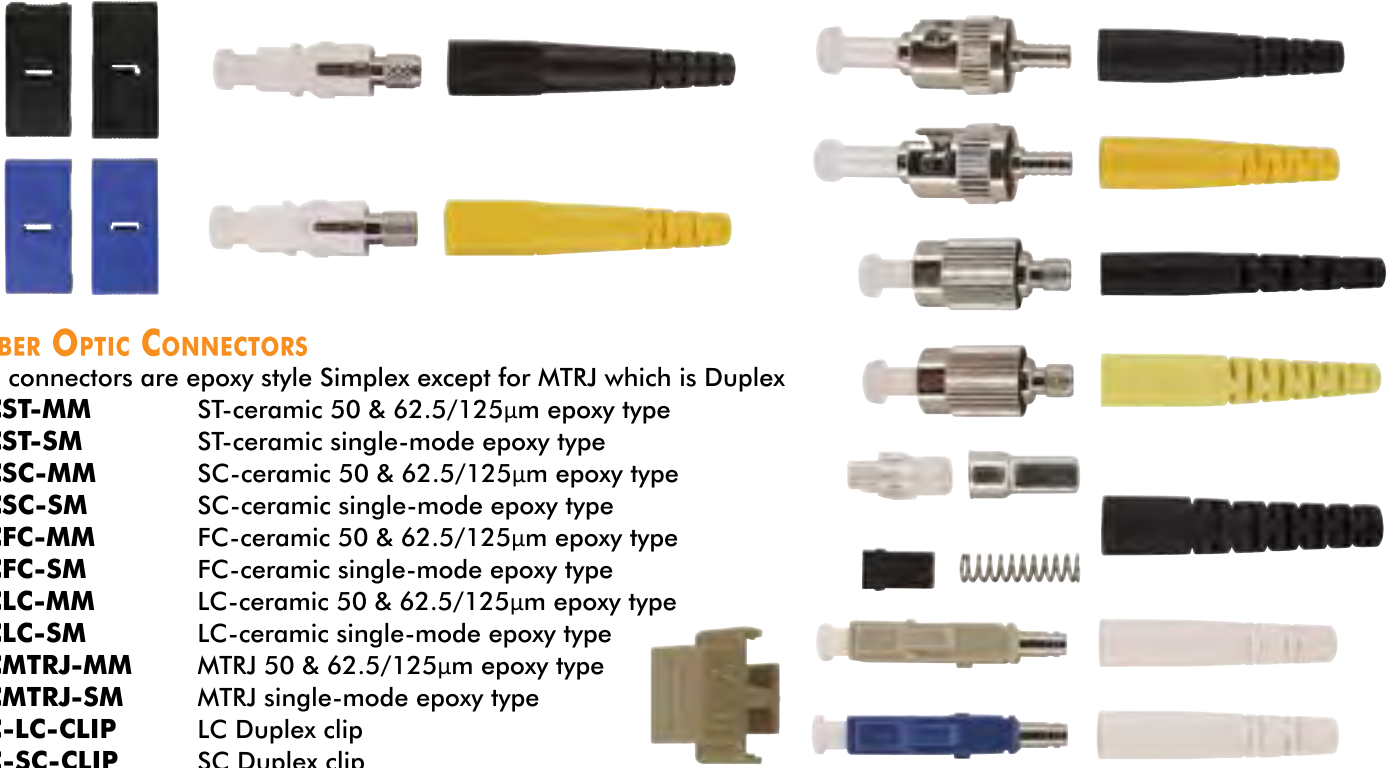
OM4 10Gig



Single Mode

FIBER OPTIC CONNECTORS & LOOPBACK MODULES

Shaxon Industries offers the same high quality fiber optic connectors that we use on our own fiber patch cords and assemblies as well as a complete line of single-mode and multi-mode adapters.



FIBER OPTIC CONNECTORS

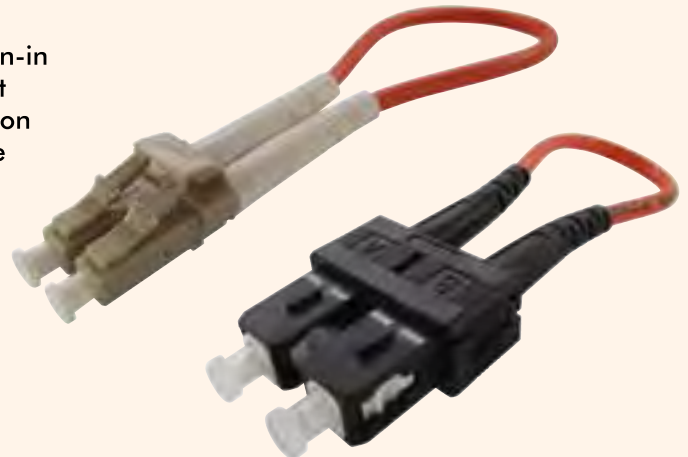
All connectors are epoxy style Simplex except for MTRJ which is Duplex

- FCST-MM** ST-ceramic 50 & 62.5/125µm epoxy type
- FCST-SM** ST-ceramic single-mode epoxy type
- FCSC-MM** SC-ceramic 50 & 62.5/125µm epoxy type
- FCSC-SM** SC-ceramic single-mode epoxy type
- FCFC-MM** FC-ceramic 50 & 62.5/125µm epoxy type
- FCFC-SM** FC-ceramic single-mode epoxy type
- FCLC-MM** LC-ceramic 50 & 62.5/125µm epoxy type
- FCLC-SM** LC-ceramic single-mode epoxy type
- FCMTRJ-MM** MTRJ 50 & 62.5/125µm epoxy type
- FCMTRJ-SM** MTRJ single-mode epoxy type
- FC-LC-CLIP** LC Duplex clip
- FC-SC-CLIP** SC Duplex clip

LOOPBACK MODULES

Loopbacks are designed for testing, engineering and the burn-in stage of boards or other equipment. They provide system test engineers a simple but effective way of testing the transmission capability and receiver sensitivity of network equipment. One connector is plugged into the output port, while the other is plugged into the input port of the equipment.

- FBL-SCSM** SC loopback SM 9/125µm fiber
- FBL-SCMM** SC loopback MM 62.5/125µm fiber
- FBL-SCMM-50** SC loopback MM 50/125µm fiber
- FBL-LCSM** LC loopback SM 9/125µm fiber
- FBL-LCMM** LC loopback MM 62.5/125µm fiber
- FBL-LCMM-50** LC loopback MM 50/125µm fiber



SHAXON ZIP-CLIPS

Shaxon's Zip-Clips snap onto Duplex zip-cord to secure and protect the breakout area. In addition, Zip-Clips can be marked with channel designations or other information.

- ZIP-CLIP10** Zip-Clip, package of 10, clear
Also available in yellow & orange. Contact your sales representative.



FIBER OPTIC ADAPTERS

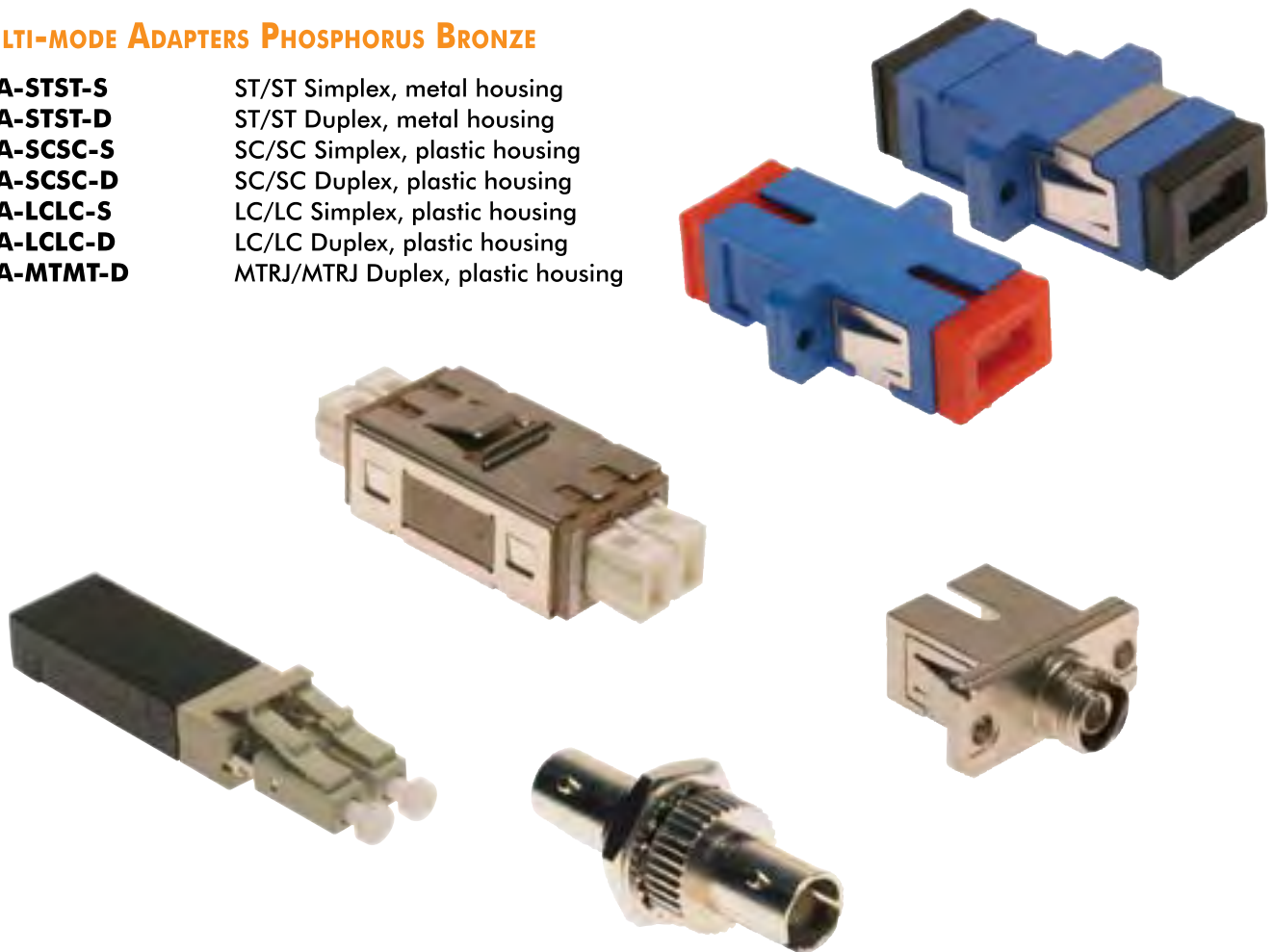
SINGLE-MODE ADAPTERS ZIRCONIA SLEEVE

FSA-STST-S	ST/ST Simplex, metal housing
FSA-STST-D	ST/ST Duplex, metal housing
FSA-STSC-S	ST/SC Simplex, plastic housing
FSA-STSC-D	ST/SC Duplex, plastic housing
FSA-STLC-S	ST/LC Simplex, metal housing
FSA-SCSC-S	SC/SC Simplex, plastic housing
FSA-SCSC-D	SC/SC Duplex, plastic housing
FSA-SCLC-S	SC/LC Simplex, plastic housing
FSA-SCAPC-S	SC/APC Simplex, plastic housing
FSA-LCLC-S	LC/LC Simplex, plastic housing
FSA-LCLC-D	LC/LC Duplex, plastic housing
FSA-MTMT-D	MTRJ/MTRJ Duplex, plastic housing
FSA-FCFC-S	FC/FC Simplex, metal housing



MULTI-MODE ADAPTERS PHOSPHORUS BRONZE

FMA-STST-S	ST/ST Simplex, metal housing
FMA-STST-D	ST/ST Duplex, metal housing
FMA-SCSC-S	SC/SC Simplex, plastic housing
FMA-SCSC-D	SC/SC Duplex, plastic housing
FMA-LCLC-S	LC/LC Simplex, plastic housing
FMA-LCLC-D	LC/LC Duplex, plastic housing
FMA-MTMT-D	MTRJ/MTRJ Duplex, plastic housing



FIBER OPTIC PATCH CABLE ORDERING CHART

Custom Fiber Optic Cable Numbering System

Use the chart below to generate a part number to match your exact specifications.

Contact the factory for multi-fiber assemblies or assembly types not listed here.

Example Part Number:

AC 48 D 6 B A 100F 3P 1

SPECIAL

- R** = Reel
- Z** = Tactical Reel
- 1** = Test Report

NUMBER OF FIBERS

Enter 2 digits from 01 to 99

ADD-ON #1

- B** = Breakout Kit
- 0** = Direct Terminate - No Furcation Tubing
- 2** = 2mm Furcation Tubing
- 3** = 3mm Furcation Tubing
- 9** = 900µm Furcation Tubing

ADD-ON #2

- D** = SC Duplex Clips
- P** = Pulling Eye
- Z** = Zip Clip

CONNECTOR TYPES (A and B)

- A** = ST/PC
- B** = ST/UPC
- C** = SC/PC
- D** = SC/UPC
- E** = SC/APC
- F** = MU
- G** = FC/PC
- H** = FC/UPC
- I** = FC/APC
- J** = SMA905
- K** = SMA906
- L** = LC Simplex
- M** = LC Duplex
- N** = FDDI (FSD, MIC)
- O** = ESCON (RSD)
- P** = OPTIJACK (FJ)
- Q** = Biconic
- R** = MTRJ Male
- S** = MTRJ Female
- T** = MTP Male
- U** = MTP Female
- V** = VF45
- W** = D4
- X** = Unterminated
- Y** = LC/APC
- Z** = LC/UPC
- 4** = MTRJ Sec. Green
- 5** = MTRJ Sec. Red
- 7** = MTRJ Sec. Yellow
- 8** = MTRJ Sec. Blue

For a Mode Conditioning cable, start the part number with the single-mode connector.

MODE

- 0** = 9/125 SM
 - 1** = 100/140 MM
 - 2** = 200/230 MM
 - 5** = 50/125 MM
 - 6** = 62.5/125 MM
 - 7** = 50/125 10Gig (OM3)
 - 8** = 50/125 40Gig (OM4)
- Leave blank if Mode Conditioning

LENGTH

Enter 3 digits from 001 to 999

UNIT OF MEASURE

F=Feet **M**=Meter **I**=Inch

COLOR

- A** = Orange **E** = Green **P** = Purple
- B** = Gray **F** = Red **Q** = Aqua
- C** = Blue **G** = Yellow **S** = Brown
- D** = Black **K** = Pink **W** = White

FIBER TYPE

- A** = Armored
- B** = Breakout
- C** = 2mm Breakout Indoor/Outdoor
- D** = Distribution
- E** = Aerial
- F** = Indoor/Outdoor Distribution
- G** = OSP Loose Tube Dry
- H** = OSP Tight buffer
- I** = Ribbon
- J** = 3mm Breakout Indoor/Outdoor
- K** = 900µm Buff
- L** = Loose Tube
- M** = Mini Zip (2mm)
- MC** = Mode Conditioning
- N** = Mini Zip (1.8mm)
- O** = Oval
- P** = Mini Zip (1.6mm)
- R** = Round Duplex
- S** = Simplex
- T** = Tactical
- V** = 250µm Bare
- Z** = Zip cord (3mm)

MATERIAL

- A** = PVC
 - B** = Plenum
 - C** = Corning Brand
 - D** = Plus Corning
 - E** = Plenum Corning Brand
 - F** = Plenum Plus Corning
 - L** = LSZH
- To specify cable manufacturers other than Shaxon Industries standard, please contact the factory.

SHIPPING POLICY:

FOB point: All orders are shipped FOB origin point unless pre-approved for FOB destination.

Shipping method: Unless specified at time of order, all shipments will be shipped pre-paid via the cheapest method or freight depending on the weight of the shipment.

Shipping Discrepancies: It is the buyer's responsibility to confirm the receipt of all items as indicated on the packing slip. Failure to report shipping discrepancies within ten (10) days of receipt will result in the order not being credited regardless of circumstances.

RMA POLICY:

All returns must have a Return Merchandise Authorization (RMA) number, must be in original condition and must be requested within thirty (30) days from the date of purchase. Any return for any reason other than defects or shipping discrepancies will be charged a fifteen percent (15%) restocking fee. Please note that CUSTOM CABLE ASSEMBLIES/CUSTOM PRODUCTS ARE NON-RETURNABLE AND NON-CANCELABLE.

INVOICE:

Invoice Receipt: In the event that the buyer does not receive any invoice by mail after ten (10) days upon receipt of shipment, the buyer shall request the invoice via registered mail, email or fax within fifteen (15) days of the billing date. Otherwise the invoice will be considered correct, full payment shall be fulfilled.

Terms Invoices: All N30 (Net 30) invoices are due thirty (30) days from shipping. All invoices become delinquent after (30) thirty days from date of shipping. As a condition of the sales agreement, a monthly finance charge of the lesser of one and a half percent (1.5%) per month or the maximum permitted by law will be added to all past due invoices until paid in full. All past due accounts over forty-five (45) days will be placed on hold until the balance is paid in full.

VENUE:

Shaxon Industries, Inc. sustains security interest on the merchandise stated above. Venue shall lie in Orange County, California, and the rights and obligations of the parties hereto shall be enforced in the state of California.

WARRANTY POLICY:

Warranty: Shaxon Industries, Inc. provides a lifetime (of the product) guarantee against defects and labor on all custom and off the shelf cables. Please note that CUSTOM CABLE ASSEMBLIES/CUSTOM PRODUCTS ARE NON-RETURNABLE AND NONCANCELABLE. Before using, buyer shall determine the suitability of the product for their intended use; buyer assumes all risks and liability in connection therewith. This warranty is not inclusive of labor for removal or reinstallation of products, and is void on any product reconfigured, installed improperly or installed in an improper environment, or misused as determined by engineering inspection of Shaxon Industries, Inc.

PAYMENT POLICY:

Shaxon Industries, Inc. accepts Visa, MasterCard, Discover, American Express, Checks and Money Orders. We do not add any credit card surcharges. Open account terms are available to qualifying resellers only - please contact your Account Manager at (800) 345-8295 for additional information.

LIMITATION OF LIABILITY:

IN NO EVENT SHALL SHAXON INDUSTRIES, INC., ITS SUBSIDIARIES OR AFFILIATES OR THEIR RESPECTIVE PARTNERS, OFFICERS, DIRECTORS, EMPLOYEES, SHAREHOLDERS, REPRESENTATIVES OR AGENTS (COLLECTIVELY, "SHAXON INDUSTRIES, INC.") BE LIABLE FOR DIRECT, SPECIAL, INCIDENTAL, CONSEQUENTIAL, PUNITIVE OR INDIRECT DAMAGES (INCLUDING BUT NOT LIMITED TO: LOSS OF DATA, USE OR PROFITS), HOWEVER CAUSED, WHETHER FOR BREACH OF CONTRACT, NEGLIGENCE, OR OTHERWISE, AND WHETHER OR NOT SHAXON INDUSTRIES, INC. HAS BEEN ADVISED OF THE POSSIBILITY OF ANY SUCH DAMAGES; YOU AGREE THAT SHAXON INDUSTRIES, INC., MAXIMUM LIABILITY FOR CERTAIN DAMAGES, SO THE ABOVE MAY NOT APPLY TO YOU TO THE EXTENT SUCH JURISDICTION'S LAW IS APPLICABLE TO THIS AGREEMENT.

Trademarks are the property of their respective owners.

©2017 Shaxon Industries, Inc. All rights reserved. The information in this document is subject to change without notice.