

PREMISE WIRING PRODUCTS
FIBER OPTIC CONNECTIVITY
PERIPHERAL CABLES
O.E.M. /CUSTOM CABLES
AUDIO /VIDEO CABLES
BULK CABLE & CONNECTORS

GLOBAL SOURCING CALIFORNIA MANUFACTURING



Shaxon Industries, Inc.

Customer Service, Quality Products & Custom Manufacturing Since 1978

4852 E. La Palma Ave. Anaheim CA 92807 • Phone: (800) 345-8295 • Fax: (800) 345-5106 • www.shaxon.com

CATEGORY 3 PRODUCTS



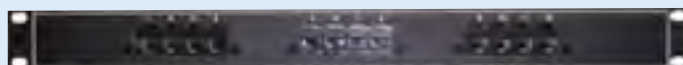
- 26 Telco Patch Panels**
- 28 110 Patch Panels & Harmonicas**
- 29 Trunk & Hydra Cables**
- 30 Flat Satin Patch Cables**

TELCO PATCH PANELS

Add an F at the end of the part number to specify a female telco connector.

12 PORT HIGH-DENSITY TELCO PANELS 1.75IN X 19IN X 1.78IN, 1U

MP51U122	RJ11 2-wire USOC
MP51U124	RJ11 4-wire USOC
MP51U126	RJ12 6-wire USOC
MP51U128	RJ45 8-wire USOC
MP51A128	RJ45 8-wire 568B
MP51T128	RJ45 4-wire (1, 2, 3, 6) 10Base-T
MP51U1282	RJ45 2-wire (4, 5) USOC
MP51U1284	RJ45 4-wire (3, 4, 5, 6) USOC
MP51U1286	RJ45 6-wire (2, 3, 4, 5, 6, 7) USOC
MP51HT1C124	RJ48X 4-wire (1, 2, 4, 5) T1
MP51HT1X124	RJ48X 4-wire (1, 2, 4, 5 with shorting bar) T1



24 PORT HIGH-DENSITY TELCO PANELS 1.75IN X 19IN X 1.78IN, 1U

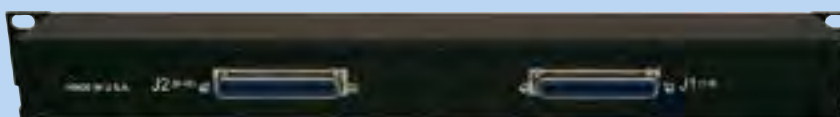
MP51HU242	RJ11 2-wire USOC
MP51HU244	RJ11 4-wire USOC
MP51HU246	RJ12 6-wire USOC
MP51HU248	RJ45 8-wire USOC
MP51HA248	RJ45 8-wire 568B
MP51HT248	RJ45 4-wire (1, 2, 3, 6) 10Base-T
MP51HU2482	RJ45 2-wire (4, 5) USOC
MP51HU2484	RJ45 4-wire (3, 4, 5, 6) USOC
MP51HU2486	RJ45 6-wire (2, 3, 4, 5, 6, 7) USOC
MP51HT1C244	RJ48X 4-wire (1, 2, 4, 5) T1
MP51HT1X244	RJ48X 4-wire (1, 2, 4, 5 with shorting bar) T1



CUSTOM PANEL REQUIREMENT?

Contact your sales representative today for all your custom panel needs.

(800) 345-8295



TELCO PATCH PANELS

Add an F at the end of the part number to specify a female telco connector.

48 PORT HIGH-DENSITY TELCO PANELS 3.5IN X 19IN X 1.78IN, 2U



- MP51HU482** RJ11 2-wire USOC
- MP51HU484** RJ11 4-wire USOC
- MP51HU486** RJ12 6-wire USOC
- MP51HU488** RJ45 8-wire USOC
- MP51HA488** RJ45 8-wire 568B
- MP51HT488** RJ45 4-wire (1, 2, 3, 6) 10Base-T
- MP51HU4882** RJ45 2-wire (4, 5) USOC
- MP51HU4884** RJ45 4-wire (3, 4, 5, 6) USOC
- MP51HU4886** RJ45 6-wire (2, 3, 4, 5, 6, 7) USOC
- MP51HT1C484** RJ48X 4-wire (1, 2, 4, 5) T1
- MP51HT1X484** RJ48X 4-wire (1, 2, 4, 5 with shorting bar) T1



96 PORT HIGH-DENSITY TELCO PANELS 7IN X 19IN X 1.78IN, 4U

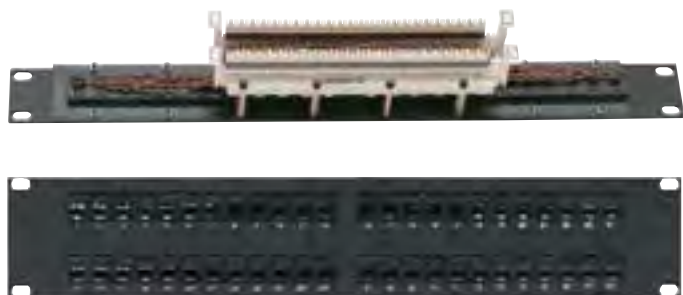


- MP51HU962** RJ11 2-wire USOC
- MP51HU964** RJ11 4-wire USOC
- MP51HU966** RJ12 6-wire USOC
- MP51HU968** RJ45 8-wire USOC
- MP51HA968** RJ45 8-wire 568B
- MP51HT968** RJ45 4-wire (1, 2, 3, 6) 10Base-T
- MP51HU9682** RJ45 2-wire (4, 5) USOC
- MP51HU9684** RJ45 4-wire (3, 4, 5, 6) USOC
- MP51HU9686** RJ45 6-wire (2, 3, 4, 5, 6, 7) USOC
- MP51HT1C964** RJ48X 4-wire (1, 2, 4, 5) T1
- MP51HT1X964** RJ48X 4-wire (1, 2, 4, 5 with shorting bar) T1



110 PATCH PANELS & HARMONICAS

Our Category 3 compliant modular to 110 patch panels provide a cross-connection field for various voice and data applications. All Shaxon 110 patch panels are high-density to save valuable rack space.



24 PORT HIGH-DENSITY 110 PANELS

1.75IN X 19IN X 3IN, 1U

MP110HU242	RJ11 2-wire USOC
MP110HU244	RJ11 4-wire USOC
MP110HU246	RJ12 6-wire USOC
MP110HU248	RJ45 8-wire USOC
MP110HU2482	RJ45 2-wire (4, 5) USOC
MP110HU2484	RJ45 4-wire (3, 4, 5, 6) USOC
MP110HU2486	RJ45 6-wire (2, 3, 4, 5, 6, 7) USOC
MP110HA248	RJ45 8-wire 568B
MP110HT248	RJ45 4-wire (1, 2, 3, 6) 10 Base-T
MP110HT1C244	RJ48C 8-wire
MP110HT1X244	RJ48X 8-wire

48 PORT HIGH-DENSITY 110 PANELS

3.5IN X 19IN X 3IN, 2U

MP110HU482	RJ11 2-wire USOC
MP110HU484	RJ11 4-wire USOC
MP110HU486	RJ12 6-wire USOC
MP110HU488	RJ45 8-wire USOC
MP110HU4882	RJ45 2-wire (4, 5) USOC
MP110HU4884	RJ45 4-wire (3, 4, 5, 6) USOC
MP110HU4886	RJ45 6-wire (2, 3, 4, 5, 6, 7) USOC
MP110HA488	RJ45 8-wire 568B
MP110HT488	RJ45 4-wire (1, 2, 3, 6) 10 Base-T
MP110HT1C484	RJ48C 8-wire
MP110HT1X484	RJ48X 8-wire

96 PORT HIGH-DENSITY 110 PANELS

7IN X 19IN X 3IN, 4U

MP110HU962	RJ11 2-wire USOC
MP110HU964	RJ11 4-wire USOC
MP110HU966	RJ12 6-wire USOC
MP110HU968	RJ45 8-wire USOC
MP110HU9682	RJ45 2-wire (4, 5) USOC
MP110HU9684	RJ45 4-wire (3, 4, 5, 6) USOC
MP110HU9686	RJ45 6-wire (2, 3, 4, 5, 6, 7) USOC
MP110HA968	RJ45 8-wire 568B
MP110HT968	RJ45 4-wire (1, 2, 3, 6) 10 Base-T
MP110HT1C964	RJ48C 8-wire
MP110HT1X964	RJ48X 8-wire

CATEGORY 3 MODULAR HARMONICAS

MH75U-4Gx	12 port, RJ11 4-wire USOC, gray
MH75U-6Gx	8 port, RJ12 6-wire USOC, gray
MH75U-8Gx	6 port, RJ45 8-wire USOC, gray
MH75A-6Gx	8 port, RJ45 6-wire 356A, gray
MH75T-412Gx	12 port, RJ45 4-wire 10Base-T, gray
MH75T-408Gx	8 port, RJ45 4-wire 10Base-T, gray
MH75T-406Gx	6 port, RJ45 4-wire 10Base-T, gray

Replace the x with **M** for male or **F** for female.
Replace **G** with **B** to specify black housing.



TRUNK CABLES & HYDRA CABLES

Shaxon manufactures a complete line of 25-pair trunk cables and hydra cables using AMP™ connectors as well as modular harmonicas. Custom length cables can be made with 90°, 120° and 180° hoods to accommodate specific installation needs.

TRUNK CABLES: PVC voice/data interface cable, AMP™ connectors

CATEGORY 3, 25-PAIR TRUNK CABLES

- MC5A3x99MMzz** 90° male to 90° male
- MC5A3x88MMzz** 180° male to 180° male
- MC5A3x98MMzz** 90° male to 180° male
- MC5A3x9NMNzz** 90° male to no connector
- MC5A3x8NMNzz** 180° male to no connector

Replace zz with custom length.
 Replace x with P for PVC, T for plenum,
 S for PVC shielded or U for plenum shielded.



Hood Types:

180°



120°



90°



HYDRA CABLES: Voice/data interface hydra cable, AMP™ telco

CATEGORY 3 HYDRA, MALE TELCO

- HM2U4T3-z-24-x** 24-leg USOC 2-wire RJ11 2C
- HM2U4T3-z-12-x** 12-leg USOC 2-wire RJ11 2C
- HM2U4T3-z-8-x** 8-leg USOC 2-wire RJ11 2C
- HM2U4T3-z-6-x** 6-leg USOC 2-wire RJ11 2C
- HM2A4T3-z-6-x** 6-leg 568B 2 wire RJ11 2C
- HM2E4T3-z-6-x** 6-leg 568A 2-wire RJ11 2C
- HM2T4T3-z-6-x** 6-leg 10Base-T 2-wire RJ11 2C

FLAT SATIN HYDRA, VOICE GRADE, MALE TELCO

- HM2U6L-z-24-x** 24-leg USOC 2-wire RJ11 2C
- HM4U6L-z-12-x** 12-leg USOC 4-wire RJ11 4C
- HM6U6L-z-8-x** 8-leg USOC 6-wire RJ12 6C
- HM8U6L-z-6-x** 6-leg USOC 8-wire RJ45 8C
- HM8A6L-z-6-x** 6-leg 568B 8-wire RJ45 8C
- HM8E6L-z-6-x** 6-leg 568A 8-wire RJ45 8C

Replace z with custom length.
 Replace x with a 9 for 90°, 2 for 120°, 8 for 180°



NEED 25-PAIR TRUNK/HYDRA CABLES? Shaxon can make hydra cables using 25-pair trunk cable rather than individual-legs as well. Contact us for more info. (800) 345-8295.

FLAT SATIN PATCH CABLES

Flat satin telephone cords are commonly used for base cord phone connections or modem connectivity. Cords are available in cross wiring for voice and straight wiring for low-speed data applications.

Replace X with C for crossed wiring or S for straight wiring.

Replace zz with custom length.

PHONE CABLES WITH MOLDED BUMP STYLE BOOT

CL210M4zzX-3F	RJ11 4C UL listed cable, gray
CL210M6zzX-3F	RJ12 6C UL listed cable, gray
CL210M8zzX-3F	RJ45 8C UL listed cable, gray
CL210M10zzX-3B	RJ48 10C UL listed cable, gray
C210M4zzX-3F	Non-UL RJ11 4C cable, gray
C210M6zzX-3F	Non-UL RJ12 6C cable, gray
C210M8zzX-3F	Non-UL RJ45 8C cable, gray
C210M10zzX-3B	Non-UL RJ48 10C cable, gray



PHONE CABLES IN COLORS

Replace yy with BK for black, BU for blue, GN for green or RD for red.

CL210-4zzXyy	RJ11 4C UL listed cable
CL210-6zzXyy	RJ12 6C UL listed cable
CL210-8zzXyy	RJ45 8C UL listed cable
C210-4zzXyy	Non-UL RJ11 4C cable
C210-6zzXyy	Non-UL RJ12 6C cable
C210-8zzXyy	Non-UL RJ45 8C cable



4-CONDUCTOR CABLES

UL210-407X	RJ11 4C UL listed cable, 7ft
UL210-414X	RJ11 4C UL listed cable, 14ft
UL210-425X	RJ11 4C UL listed cable, 25ft
CL210-4zzX	RJ11 4C UL cable, custom length
C210-4zzX	Non-UL RJ11 4C cable, custom length



6-CONDUCTOR CABLES

UL210-607X	RJ12 6C UL listed cable, 7ft
UL210-614X	RJ12 6C UL listed cable, 14ft
UL210-625X	RJ12 6C UL listed cable, 25ft
CL210-6zzX	RJ12 6C UL listed cable, custom length
C210-6zzX	Non-UL RJ12 6C cable, custom length

8-CONDUCTOR CABLES

UL210-807X	RJ45 8C UL listed cable, 7ft
UL210-814X	RJ45 8C UL listed cable, 14ft
UL210-825X	RJ45 8C UL listed cable, 25ft
CL210-8zzX	RJ45 8C UL listed cable, custom length
C210-8zzX	Non-UL RJ45 8C cable, custom length

NEED CUSTOM CABLES?

Shaxon can manufacture flat satin cables to meet your specifications, including custom jacket color, jacket printing and non-standard wiring color codes. Call your sales representative for details. Minimums may apply. **(800) 345-8295**

SHIPPING POLICY:

FOB point: All orders are shipped FOB origin point unless pre-approved for FOB destination.

Shipping method: Unless specified at time of order, all shipments will be shipped pre-paid via the cheapest method or freight depending on the weight of the shipment.

Shipping Discrepancies: It is the buyer's responsibility to confirm the receipt of all items as indicated on the packing slip. Failure to report shipping discrepancies within ten (10) days of receipt will result in the order not being credited regardless of circumstances.

RMA POLICY:

All returns must have a Return Merchandise Authorization (RMA) number, must be in original condition and must be requested within thirty (30) days from the date of purchase. Any return for any reason other than defects or shipping discrepancies will be charged a fifteen percent (15%) restocking fee. Please note that CUSTOM CABLE ASSEMBLIES/CUSTOM PRODUCTS ARE NON-RETURNABLE AND NON-CANCELABLE.

INVOICE:

Invoice Receipt: In the event that the buyer does not receive any invoice by mail after ten (10) days upon receipt of shipment, the buyer shall request the invoice via registered mail, email or fax within fifteen (15) days of the billing date. Otherwise the invoice will be considered correct, full payment shall be fulfilled.

Terms Invoices: All N30 (Net 30) invoices are due thirty (30) days from shipping. All invoices become delinquent after (30) thirty days from date of shipping. As a condition of the sales agreement, a monthly finance charge of the lesser of one and a half percent (1.5%) per month or the maximum permitted by law will be added to all past due invoices until paid in full. All past due accounts over forty-five (45) days will be placed on hold until the balance is paid in full.

VENUE:

Shaxon Industries, Inc. sustains security interest on the merchandise stated above. Venue shall lie in Orange County, California, and the rights and obligations of the parties hereto shall be enforced in the state of California.

WARRANTY POLICY:

Warranty: Shaxon Industries, Inc. provides a lifetime (of the product) guarantee against defects and labor on all custom and off the shelf cables. Please note that CUSTOM CABLE ASSEMBLIES/CUSTOM PRODUCTS ARE NON-RETURNABLE AND NONCANCELABLE. Before using, buyer shall determine the suitability of the product for their intended use; buyer assumes all risks and liability in connection therewith. This warranty is not inclusive of labor for removal or reinstallation of products, and is void on any product reconfigured, installed improperly or installed in an improper environment, or misused as determined by engineering inspection of Shaxon Industries, Inc.

PAYMENT POLICY:

Shaxon Industries, Inc. accepts Visa, MasterCard, Discover, American Express, Checks and Money Orders. We do not add any credit card surcharges. Open account terms are available to qualifying resellers only - please contact your Account Manager at (800) 345-8295 for additional information.

LIMITATION OF LIABILITY:

IN NO EVENT SHALL SHAXON INDUSTRIES, INC., ITS SUBSIDIARIES OR AFFILIATES OR THEIR RESPECTIVE PARTNERS, OFFICERS, DIRECTORS, EMPLOYEES, SHAREHOLDERS, REPRESENTATIVES OR AGENTS (COLLECTIVELY, "SHAXON INDUSTRIES, INC.") BE LIABLE FOR DIRECT, SPECIAL, INCIDENTAL, CONSEQUENTIAL, PUNITIVE OR INDIRECT DAMAGES (INCLUDING BUT NOT LIMITED TO: LOSS OF DATA, USE OR PROFITS), HOWEVER CAUSED, WHETHER FOR BREACH OF CONTRACT, NEGLIGENCE, OR OTHERWISE, AND WHETHER OR NOT SHAXON INDUSTRIES, INC. HAS BEEN ADVISED OF THE POSSIBILITY OF ANY SUCH DAMAGES; YOU AGREE THAT SHAXON INDUSTRIES, INC., MAXIMUM LIABILITY FOR CERTAIN DAMAGES, SO THE ABOVE MAY NOT APPLY TO YOU TO THE EXTENT SUCH JURISDICTION'S LAW IS APPLICABLE TO THIS AGREEMENT.

Trademarks are the property of their respective owners.

©2017 Shaxon Industries, Inc. All rights reserved. The information in this document is subject to change without notice.