

PREMISE WIRING PRODUCTS
FIBER OPTIC CONNECTIVITY
PERIPHERAL CABLES
O.E.M. /CUSTOM CABLES
AUDIO /VIDEO CABLES
BULK CABLE & CONNECTORS

GLOBAL SOURCING CALIFORNIA MANUFACTURING



Shaxon Industries, Inc.

Customer Service, Quality Products & Custom Manufacturing Since 1978

4852 E. La Palma Ave. Anaheim CA 92807 • Phone: (800) 345-8295 • Fax: (800) 345-5106 • www.shaxon.com

Spectrum Plus[™] CATEGORY 6 & 6A PRODUCTS



- 2 **Category 6A Patch Cables**
- 3 **Slim Jacket Patch Cables**
- 4 **Category 6 Patch Cables**
- 6 **Keystone & 110 Patch Cables**
- 7 **Category 6 & 6A Patch Panels**
- 8 **Ultra High-density Patch Panels**
- 9 **Ultra High-density Feed-through Panels**
- 10 **Mini Patch Panels & Keystone Jacks**

Spectrum Plus™ CATEGORY 6A PATCH CABLES

Our Category 6A patch cables are rated above 500MHz and are designed to suppress ANEXT (Alien Near End Cross Talk), delivering superior 10 Gigabit Ethernet performance at up to 100 meters.

Replace zz with custom length. Replace xx-X with color code below. Place an X at the end of the part number to order a crossover cable.



**Spectrum Plus™ CATEGORY 6A
STRANDED, UNSHIELDED PATCH CABLES,
FLUSH-MOLDED BOOT STYLE**

UL824M801xx-XF	1ft
UL824M803xx-XF	3ft
UL824M805xx-XF	5ft
UL824M807xx-XF	7ft
UL824M810xx-XF	10ft
UL824M814xx-XF	14ft
UL824M825xx-XF	25ft
UL824M850xx-XF	50ft
UL824M875xx-XF	75ft
UL824M8100xx-XF	100ft
C824M8zzxx-XF	Custom length



Color Code:										
COLOR	Gray	Blue	White	Red	Black	Green	Yellow	Orange	Pink	Purple
MOLDED BOOT STYLE	GY-3	BU-8	WT-6	RD-5	BK-1	GN-4	YL-7	OR-9	PK-B	PR-A

Shaxon is proud to introduce our *Spectrum Plus™* product line of Category 6 and 6A patch cables.

- Injection-molded boots for critical bend radius requirements and sealing of the plug/cable interface
- Flush-mold design to allow side-by-side installation of booted patch cables in high-density patch fields
- Short body plugs for minimal untwisting of cable pairs during manufacturing
- 24AWG stranded construction for maximum flexibility
- Compliance with EIA/TIA Category 6 or 6A specifications



CATEGORY 6 SLIM JACKET PATCH CABLES

Shaxon **SLIM JACKET** Category 6 patch cables are designed for environments where space is at a premium. The slim cable design assures easy access and removal in high-density patch fields. The boot design is flush to the plug, offering side-to-side stackability even in the densest jack field.

Features:

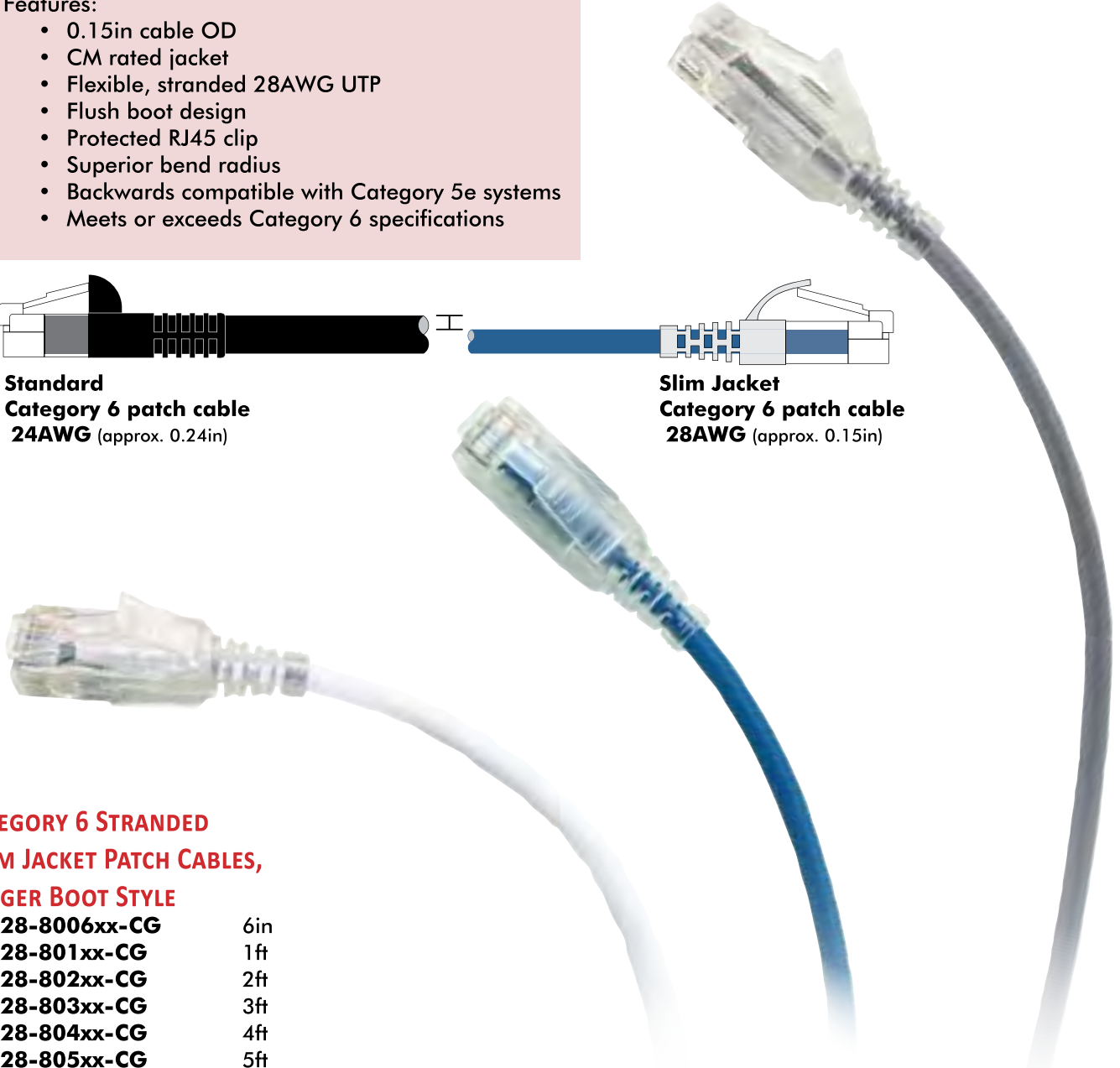
- 0.15in cable OD
- CM rated jacket
- Flexible, stranded 28AWG UTP
- Flush boot design
- Protected RJ45 clip
- Superior bend radius
- Backwards compatible with Category 5e systems
- Meets or exceeds Category 6 specifications



Standard
Category 6 patch cable
24AWG (approx. 0.24in)



Slim Jacket
Category 6 patch cable
28AWG (approx. 0.15in)



**CATEGORY 6 STRANDED
SLIM JACKET PATCH CABLES,
FINGER BOOT STYLE**

- UL728-8006xx-CG** 6in
- UL728-801xx-CG** 1ft
- UL728-802xx-CG** 2ft
- UL728-803xx-CG** 3ft
- UL728-804xx-CG** 4ft
- UL728-805xx-CG** 5ft
- UL728-806xx-CG** 6ft
- UL728-807xx-CG** 7ft
- UL728-810xx-CG** 10ft
- UL728-814xx-CG** 14ft
- UL728-815xx-CG** 15ft
- UL728-820xx-CG** 20ft
- C728-8zzxx-CG** Custom length

Replace zz with custom length.
Replace xx with color code below.

Cable Color:								
COLOR	Black	Blue	Gray	Green	Orange	Red	White	Yellow
CODE	BK	BU	GY	GN	OR	RD	WT	YL

Spectrum Plus™ CATEGORY 6 PATCH CABLES

Replace zz with custom length. Replace xx-X with color code below.
Place an X at the end of the part number to order a crossover cable.



Spectrum Plus™ CATEGORY 6 STRANDED 24AWG

PATCH CABLES, FLUSH-MOLDED BOOT STYLE

UL724M801xx-XF	1ft
UL724M802xx-XF	2ft
UL724M803xx-XF	3ft
UL724M804xx-XF	4ft
UL724M805xx-XF	5ft
UL724M806xx-XF	6ft
UL724M807xx-XF	7ft
UL724M810xx-XF	10ft
UL724M814xx-XF	14ft
UL724M815xx-XF	15ft
UL724M820xx-XF	20ft
UL724M825xx-XF	25ft
UL724M850xx-XF	50ft
UL724M875xx-XF	75ft
UL724M8100xx-XF	100ft
C724M8zzxx-XF	Custom length

Spectrum Plus™ CATEGORY 6 STRANDED 24AWG

PATCH CABLES, STRANDED, NON-BOOTED STYLE

UL724-801xx	1ft
UL724-802xx	2ft
UL724-803xx	3ft
UL724-804xx	4ft
UL724-805xx	5ft
UL724-806xx	6ft
UL724-807xx	7ft
UL724-810xx	10ft
UL724-814xx	14ft
UL724-815xx	15ft
UL724-820xx	20ft
UL724-825xx	25ft
UL724-850xx	50ft
UL724-875xx	75ft
UL724-8100xx	100ft
C724-8zzxx	Custom length

Boot Style and Color Code											
COLOR	Clear Boot	Gray	Blue	White	Red	Black	Green	Yellow	Orange	Pink	Purple
MOLDED BOOT STYLE	xx-C	GY-3	BU-8	WT-6	RD-5	BK-1	GN-4	YL-7	OR-9	PK-B	PR-A
NON-BOOTED STYLE	N/A	GY	BU	WT	RD	BK	GN	YL	OR	PK	PR

Spectrum Plus™ CATEGORY 6 STRANDED 24AWG,

SHIELDED PATCH CABLES, FLUSH-MOLDED BOOT STYLE

UL726SM801xx-XF	1ft
UL726SM802xx-XF	2ft
UL726SM803xx-XF	3ft
UL726SM804xx-XF	4ft
UL726SM805xx-XF	5ft
UL726SM806xx-XF	6ft
UL726SM807xx-XF	7ft
UL726SM810xx-XF	10ft
UL726SM814xx-XF	14ft
UL726SM815xx-XF	15ft
UL726SM820xx-XF	20ft
UL726SM825xx-XF	25ft
UL726SM850xx-XF	50ft
UL726SM875xx-XF	75ft
UL726SM8100xx-XF	100ft
C726SM8zzxx-XF	Custom length



CATEGORY 6 CUSTOM PATCH CABLES

All cable is 24AWG unless otherwise listed.

Replace zz with custom length. Place an X at the end of the part number to order a crossover cable. Contact the factory for boot and cable color choices.



Spectrum Plus™ CATEGORY 6 PATCH CABLE,
MOLDED FINGER BOOT STYLE

- C724M8zzGY-3G** Stranded, PVC, gray
- C725M8zzGY-3G** Solid, PVC, gray



Spectrum Plus™ CATEGORY 6 PATCH CABLE,
ASSEMBLED FINGER BOOT STYLE

- C724-8zzGY-CG** Stranded, PVC, gray jacket, clear boot
- C725-8zzGY-CG** Solid, PVC, gray jacket, clear boot
- C725P-8zzGY-CG** Solid, plenum, gray jacket, clear boot



Spectrum Plus™ CATEGORY 6 PATCH CABLE,
SLIDE-ON BOOT STYLE

- C724-8zzGY-3B** Stranded, PVC, gray
- C725-8zzGY-3B** Solid, PVC, gray
- C725P-8zzGY-3B** Solid, plenum, gray



Spectrum Plus™ CATEGORY 6 PATCH CABLE,
NON-BOOTED STYLE

- C725-8zzGY** Solid, PVC, gray
- C725P-8zzGY** Solid, plenum, gray



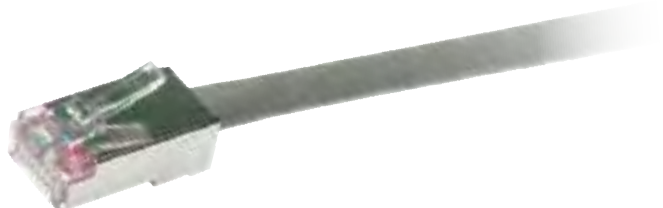
Spectrum Plus™ CATEGORY 6 SHIELDED PATCH CABLES,
SLIDE-ON BOOT STYLE

- C724S-8zzGY-3B** Stranded 24AWG, PVC, gray
- C726S-8zzGY-3B** Stranded 26AWG, PVC, gray



Spectrum Plus™ CATEGORY 6 SHIELDED PATCH CABLES,
NON-BOOTED STYLE

- C725S-8zzGY** Solid, PVC, gray
- C725SP-8zzGY** Solid, plenum, gray



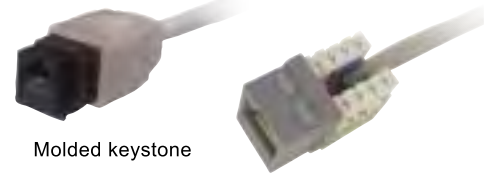
CATEGORY 6 & 6A PRODUCTS

Spectrum Plus™ SHIELDED, KEYSTONE & 110 PATCH CABLES

Replace zz with custom length. Contact the factory for boot and cable color choices.

Spectrum Plus™ CATEGORY 6 24AWG STRANDED KEYSTONE PATCH CABLES

Spectrum Plus™ Category 6 keystone outlet compatible cables offer an innovative solution for plug and play patching. Molded keystone outlet cables (MKO7) and assembled keystone outlet cables are fully terminated and tested at the factory and need only to be plugged into a keystone panel or plate in the field for to create a pre-terminated data run. MKO7 cables are available in plug to jack or plug to plug versions.



Molded keystone

Assembled keystone

C703-8zzGY

Assembled female keystone to non-booted RJ45 plug cable, gray

C703-8zzGY-X

Assembled female keystone to non-booted RJ45 plug crossover cable, gray

C715M8zzGY-3F

Molded female keystone to molded-boot RJ45 plug cable, gray

C715M8zzGY-3FX

Molded female keystone to molded-boot RJ45 plug crossover cable, gray

C714M8zzGY

Molded female keystone to molded female keystone cable, gray

C714M8zzGY-X

Molded female keystone to molded female keystone crossover cable, gray

C717M8zzGY

Molded female keystone to 4-pair 110 cable, gray

Spectrum Plus™ CATEGORY 6 24AWG STRANDED MOLDED FEMALE PATCH CABLES

Spectrum Plus™ Category 6 over-molded female RJ45 jack (OFJ7) to RJ45 plug patch cords feature a rugged RJ45 female mold for extension and conversion cable applications. OFJ7 cables are available in plug to jack or plug to plug versions and can be built in custom lengths and colors.

C713M8zzGY-3F

Male to female cable, gray

C713M8zzGY-3FX

Male to female crossover cable, gray

C712M8zzGY

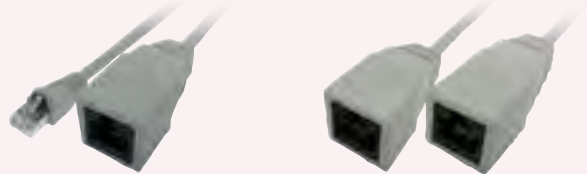
Female to female cable, gray

C712M8zzGY-X

Female to female crossover cable, gray

C716M8zzGY

Female RJ45 to 4-pair 110 cable, gray



Male to female

Female to female

Spectrum Plus™ CATEGORY 6 26AWG STRANDED SHIELDED MOLDED FEMALE PATCH CABLES

C713SM8zzGY-3F

Male to female cable, gray

C713SM8zzGY-3FX

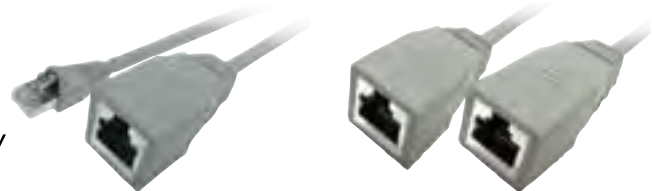
Male to female crossover cable, gray

C712SM8zzGY

Female to female cable, gray

C712SM8zzGY-X

Female to female crossover cable, gray



Male to female, shielded

Female to female, shielded

Spectrum Plus™ CATEGORY 6 24AWG STRANDED 110 PATCH CABLES

C711-8zzGY

RJ45 plug male to 4-pair 110 male cable, gray

C710-8zzGY

4-pair 110 male to 4-pair 110 male cable, gray



Spectrum Plus™ CATEGORY 6 & 6A PATCH PANELS



Spectrum Plus™ Category 6 & 6A patch panels include the following features:

- Compatible with 100Base-T, ATM and Gigabit Ethernet networks
- Gold plated modular jacks
- Fully enclosed PC boards
- EIA/TIA 568A/B wiring
- UL approved



Retail packaging available on many of our Category 6 patch panel products!

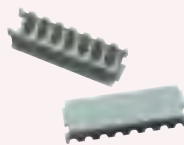
Spectrum Plus™ CATEGORY 6A 110 PATCH PANELS

Rack mount premise distribution panel



Part Number	Description	Wiring	Dimensions (H x W x D)
MP118HA248	24 port patch panel	568A/B	1.75in x 19in x 2in, 1U
MP118SHA248	24 port shielded patch panel	568A/B	1.75in x 19in x 2in, 1U
MP118HA488	48 port patch panel	568A/B	3.5in x 19in x 2in, 2U
MP118SHA488	48 port shielded patch panel	568A/B	3.5in x 19in x 2in, 2U

Patch Panels Include:



110 Stuffer Caps



110 Punch Down Tool



Nylon Zip-Ties



Mounting Screws

Spectrum Plus™ CATEGORY 6 110 PATCH PANELS

Rack mount premise distribution panel



Part Number	Description	Wiring	Dimensions (H x W x D)
MP117HA128	12 port patch panel	568A/B	1.75in x 19in x 2in, 1U
MP117HA248	24 port patch panel	568A/B	1.75in x 19in x 2in, 1U
MP117HA488	48 port patch panel	568A/B	3.5in x 19in x 2in, 2U
MP117HA968	96 port patch panel	568A/B	7in x 19in x 2in, 4U

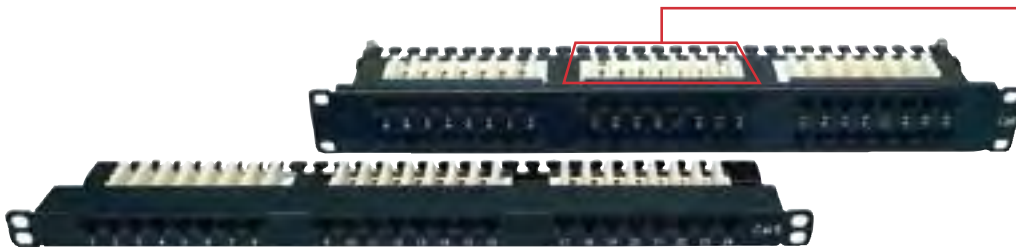
ULTRA HIGH-DENSITY PATCH PANELS



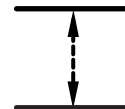
Shaxon Industries ultra high-density patch panels save valuable rack space by condensing standard RJ45 port counts into half the standard space.

Features:

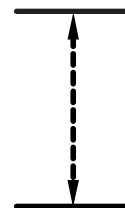
- Saves space in the rack/cabinet
- Dual 568A/B color coding
- 110-type termination
- Integrated wire management on rear of panel



MPH17HA248 24 port CAT 6 RJ45-110, 0.875in height, 1/2U



MPH17HA488 48 port CAT 6 RJ45-110, 1.75in height, 1U



ULTRA HIGH-DENSITY FEED-THROUGH PANELS



Shaxon Industries ultra high-density 48 port RJ45 feed-through panels offer space optimization in any rack or cabinet application. Convenient feed-through coupler design connects RJ45 patch cables from front ports to back ports and allows the installation of a cross-connect without the complexity and labor of a punch-down-type panel. Integrated wire management helps route and secure cable to improve reliability and facilitate moves, adds and changes.

Features:

- Ultra high-density design saves space in racks and cabinets
- Convenient port designation area
- 48 ports in 1 rackspace (1U)
- Panel includes integrated wire management
- Passes Category 6 channel with minimum of 3db headroom in cross-connect applications
- Integrated wire management is removable for use with conventional duct-style horizontal managers

MPFVH-488-C6

48 ports, loaded with Category 6 couplers, 1U, markable area for labeling, black powder coat



Shaxon also offers all the standard patch cord and custom patch cord and bundles needed for your installation needs. Contact us at (800) 345-8295, sales@shaxon.com

MINI PATCH PANELS & KEYSTONE JACKS

Spectrum Plus™ CATEGORY 6 110 MINI WALL MOUNT PATCH PANEL

Wall mount premise distribution panel

All the features of a rack mount Category 6 panel in a compact, wall mount unit.

Includes:

- S89D bracket
- Gold plated modular jacks
- Fully enclosed PC boards
- Stuffer caps
- 110 punch down tool

MP117MA128

12 Port Mini Patch Panel, 568A/B,
3.37in x 10in x 1.88in



Keystone jack colors: replace x with B for black, U for blue, GY for gray, G for green, I for ivory, O for orange, PR for purple, R for red, W for white or Y for yellow.



Spectrum Plus™ CATEGORY 6A

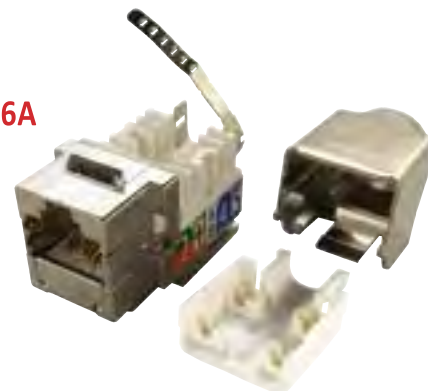
110 KEYSTONE JACK

BM803x810
568A/B

Spectrum Plus™ CATEGORY 6A

SHIELDED KEYSTONE JACK

BM803SH810
568A/B



Spectrum Plus™ CATEGORY 6

110 KEYSTONE JACK

BM703x810
568A/B



Spectrum Plus™ CATEGORY 6

KEYSTONE COUPLER

BM703B-IC8
Feed-through coupler, black

Spectrum Plus™ CATEGORY 6

SHIELDED KEYSTONE JACK

BM703SH810
568A/B



Spectrum Plus™ CATEGORY 6

SHIELDED KEYSTONE COUPLER

BM703S-IC8



SHIPPING POLICY:

FOB point: All orders are shipped FOB origin point unless pre-approved for FOB destination.

Shipping method: Unless specified at time of order, all shipments will be shipped pre-paid via the cheapest method or freight depending on the weight of the shipment.

Shipping Discrepancies: It is the buyer's responsibility to confirm the receipt of all items as indicated on the packing slip. Failure to report shipping discrepancies within ten (10) days of receipt will result in the order not being credited regardless of circumstances.

RMA POLICY:

All returns must have a Return Merchandise Authorization (RMA) number, must be in original condition and must be requested within thirty (30) days from the date of purchase. Any return for any reason other than defects or shipping discrepancies will be charged a fifteen percent (15%) restocking fee. Please note that CUSTOM CABLE ASSEMBLIES/CUSTOM PRODUCTS ARE NON-RETURNABLE AND NON-CANCELABLE.

INVOICE:

Invoice Receipt: In the event that the buyer does not receive any invoice by mail after ten (10) days upon receipt of shipment, the buyer shall request the invoice via registered mail, email or fax within fifteen (15) days of the billing date. Otherwise the invoice will be considered correct, full payment shall be fulfilled.

Terms Invoices: All N30 (Net 30) invoices are due thirty (30) days from shipping. All invoices become delinquent after (30) thirty days from date of shipping. As a condition of the sales agreement, a monthly finance charge of the lesser of one and a half percent (1.5%) per month or the maximum permitted by law will be added to all past due invoices until paid in full. All past due accounts over forty-five (45) days will be placed on hold until the balance is paid in full.

VENUE:

Shaxon Industries, Inc. sustains security interest on the merchandise stated above. Venue shall lie in Orange County, California, and the rights and obligations of the parties hereto shall be enforced in the state of California.

WARRANTY POLICY:

Warranty: Shaxon Industries, Inc. provides a lifetime (of the product) guarantee against defects and labor on all custom and off the shelf cables. Please note that CUSTOM CABLE ASSEMBLIES/CUSTOM PRODUCTS ARE NON-RETURNABLE AND NONCANCELABLE. Before using, buyer shall determine the suitability of the product for their intended use; buyer assumes all risks and liability in connection therewith. This warranty is not inclusive of labor for removal or reinstallation of products, and is void on any product reconfigured, installed improperly or installed in an improper environment, or misused as determined by engineering inspection of Shaxon Industries, Inc.

PAYMENT POLICY:

Shaxon Industries, Inc. accepts Visa, MasterCard, Discover, American Express, Checks and Money Orders. We do not add any credit card surcharges. Open account terms are available to qualifying resellers only - please contact your Account Manager at (800) 345-8295 for additional information.

LIMITATION OF LIABILITY:

IN NO EVENT SHALL SHAXON INDUSTRIES, INC., ITS SUBSIDIARIES OR AFFILIATES OR THEIR RESPECTIVE PARTNERS, OFFICERS, DIRECTORS, EMPLOYEES, SHAREHOLDERS, REPRESENTATIVES OR AGENTS (COLLECTIVELY, "SHAXON INDUSTRIES, INC.") BE LIABLE FOR DIRECT, SPECIAL, INCIDENTAL, CONSEQUENTIAL, PUNITIVE OR INDIRECT DAMAGES (INCLUDING BUT NOT LIMITED TO: LOSS OF DATA, USE OR PROFITS), HOWEVER CAUSED, WHETHER FOR BREACH OF CONTRACT, NEGLIGENCE, OR OTHERWISE, AND WHETHER OR NOT SHAXON INDUSTRIES, INC. HAS BEEN ADVISED OF THE POSSIBILITY OF ANY SUCH DAMAGES; YOU AGREE THAT SHAXON INDUSTRIES, INC., MAXIMUM LIABILITY FOR CERTAIN DAMAGES, SO THE ABOVE MAY NOT APPLY TO YOU TO THE EXTENT SUCH JURISDICTION'S LAW IS APPLICABLE TO THIS AGREEMENT.

Trademarks are the property of their respective owners.

©2017 Shaxon Industries, Inc. All rights reserved. The information in this document is subject to change without notice.